

and are accessible to disabled visitors.

Portions of the park have been cleared of physical barriers and are always an exciting and inspiring sight.

the action on the lake, large herds of deer frequent these areas

In addition to the small, friendly wooded campgrounds and

tering expanse of the lake itself.

boating, windsurfing or just plain bobbing and drifting on the gilt-

ing, horseback riding, snowmobiling, fishing, water skiing, portoon

carefully maintained indigenous woodland ideal for camping, hike-

11,100-acres of water, 250 miles of shoreline and large tracts of

Four miles southeast of Findlay, the sites encompass

tions for a day, a weekend, or even longer.

outdoor recreation, natural and luxurious accommodations

central portion of Lake Shelbyville, provide the perfect setting for

the Eagle Creek/Wolf Creek sites, facing each other across the

Decatur, Champaign, Effingham and surrounding communities—

in east central Illinois—just minutes from Springfield,

## Eagle Creek State Park



aged natural retreat.

hiking trails that make this a beautiful, well-tended and well-man-

improvements in campground, boat launches, day-use areas and

has purchased additional surrounding lands and made extensive

ing primitive camping facilities. In the years since then, the State

began in 1968. By 1972, the area was open to the public provid-

Illinois on a long-term lease from the federal government which

Corps of Engineers, and the land is now managed by the State of

Most of this work was done by the United States Army

level and manage the 25,300 acres of its flood control pool.

forced concrete, gate-controlled spillway to manipulate the water

above the original stream bed. It's 3,025 feet long with a rein-

The dam itself is an earthen embankment towering 110 feet

\$56 million project began in May of 1963.

work on the dam at Shelbyville could begin, several old mines in

the area had to be completely filled in, cemeteries in the path of

the planned lake had to be relocated, two gas and oil pipelines

and roads rerouted, the old Shelby Power Plant demolished and

land cleared and leveled on the west side of the channel which

hugs the bluff to the east of the river bottom. Construction of this

\$56 million project began in May of 1963.

It was, of course, a monumental undertaking. Before actual

work on the dam at Shelbyville could begin, several old mines in

the area had to be completely filled in, cemeteries in the path of

the planned lake had to be relocated, two gas and oil pipelines

and roads rerouted, the old Shelby Power Plant demolished and

land cleared and leveled on the west side of the channel which

hugs the bluff to the east of the river bottom. Construction of this

\$56 million project began in May of 1963.

## History

Like many other such areas, the Eagle Creek/Wolf Creek

sites are perfect examples of the potential benefits of natural

resource management. As a means of flood control, water supply

and downstream water quality control, the Flood Control Act of

1958 authorized the Shelbyville Reservoir Project, which involved

construction of a dam and creation of a lake. These practical

necessities, however, would also allow for the actual conservation

of fish and wildlife and the development of areas for exciting and

varied recreational opportunities.



**Eagle Creek State Park**  
P.O. Box 16, Findlay, IL, 62534, 217-756-8260

- While groups of 25 or more are welcome and encouraged to use the park's facilities, they are required to register in advance with the site office to avoid crowding or scheduling conflicts.
- At least one responsible adult must accompany each group of 15 minors.
- Pets must be kept on leashes at all times.
- Actions by nature can result in closed roads and other facilities. Please call ahead to the park office before you make your trip.
- We hope you enjoy your stay. Remember, take only memories, leave only footprints.
- For more information on tourism in Illinois, call the Illinois Department of Commerce and Economic Opportunity Bureau of Tourism at 1-800-2Connect.
- Telecommunication Device for Deaf and Hearing Impaired Natural Resources Information (217) 782-9175 for TDD only Relay Number 800-526-0844.

Equal opportunity to participate in programs of the Illinois Department of Natural Resources (IDNR) and those funded by the U.S. Fish and Wildlife Service and other agencies is available to all individuals regardless of race, sex, national origin, disability, age, religion, or other non-merit factors. If you believe you have been discriminated against, contact the funding source's civil rights office and/or the Equal Employment Opportunity Officer, IDNR, One Natural Resources Way, Springfield, IL 62702; 217/785-0067, TTY 217/782-9175

Printed by authority of the State of Illinois 25M-6/06



PRT3400467 IISG816

up on the day's news, or plan the evening's activities.

A special feature of the Eagle Creek Resort is the detached

Eagle's Landing Conference Retreat. The retreat contains a large

conference/lounge area with a fireplace, eight sleeping rooms, a

full-service kitchen and wet bar. The Eagle's Nest conference

retreat overlooks Lake Shelbyville, offering serene surroundings

for a meeting or conference as well as full resort services.

Reservations for lodging can be made with the lodge man-

ager by calling 1-800-876-3245.



For those who prefer more comfortable accommodations,

there is the Eagle Creek Resort. There are 138 luxurious guest

rooms including 10 deluxe king suites with fireplaces. Rooms are

furnished with country furniture and charming accents and each

has a patio where guests can enjoy views of the countryside and

lake area. Golfers will love the 18-hole championship golf course.

An indoor swimming pool, whirlpool, saunas and exercise room

are available for year round activity.

Fine dining is available in the Rosewood Dining Room and

The Bunker's Bar & Grill offers a more casual dining atmosphere.

The cocktail lounge is a convenient place to meet friends, catch

## The Resort

## Picnicking

The Eagle Creek State Recreation Area, a 2,200-acre site on the west side of Lake Shelbyville, has several fully developed picnic areas—complete with grills, tables, water and sanitary facilities—scattered conveniently throughout the park for the casual day visitor.

## Camping

There are 163 vehicular campsites (including 148 "Class A" sites with electricity, picnic tables and showers);



a tent camping area and an organized group camping area are also available. 56 "Class A" sites have been designated for reservations. Requests for reservations are accepted in January for sites to be reserved between April 1 - October 31.

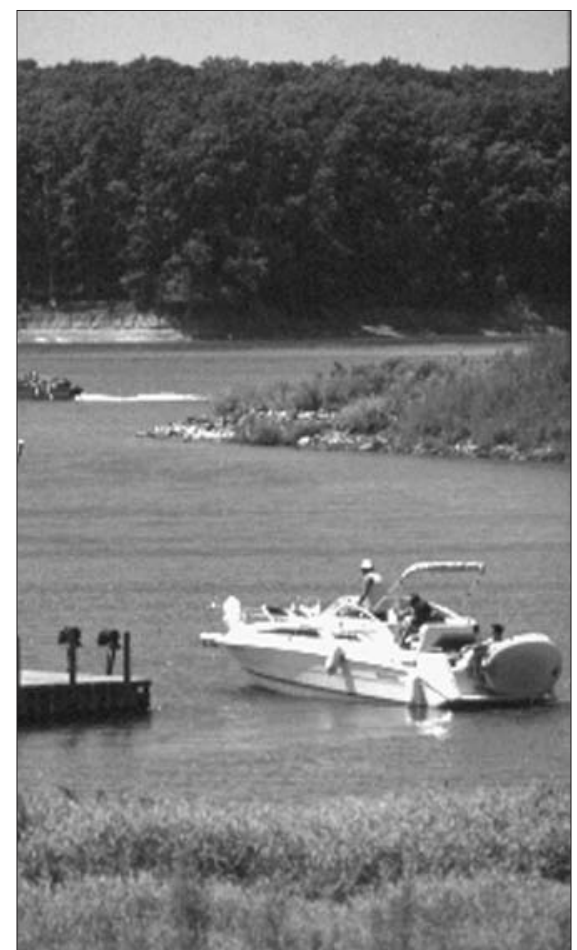
## Boating and Fishing

From the four-lane launching ramp (adjacent to a 175-car parking lot), you can set out for a variety of water sports or lazy days of angling. In addition, there are three marinas on the lake providing a full range of boating and fishing supplies.

State of Illinois  
Rod R. Blagojevich, Governor  
Illinois Department of Natural Resources



## Eagle Creek STATE PARK



EAGLE CREEK STATE PARK



**Illinois**  
Department of  
Natural Resources

The miles of flooded brush, timber and rock rip-rap shorelines . . . the many points with submerged ridges . . . the hundreds of tributary streams emptying into Lake Shelbyville . . . provide prime and productive fishing areas, teeming with black and white crappie, largemouth bass, walleye, channel and flathead catfish, bluegill, muskie, bullhead, carp and sunfish.

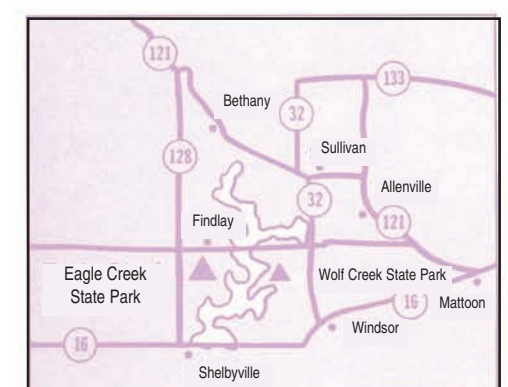
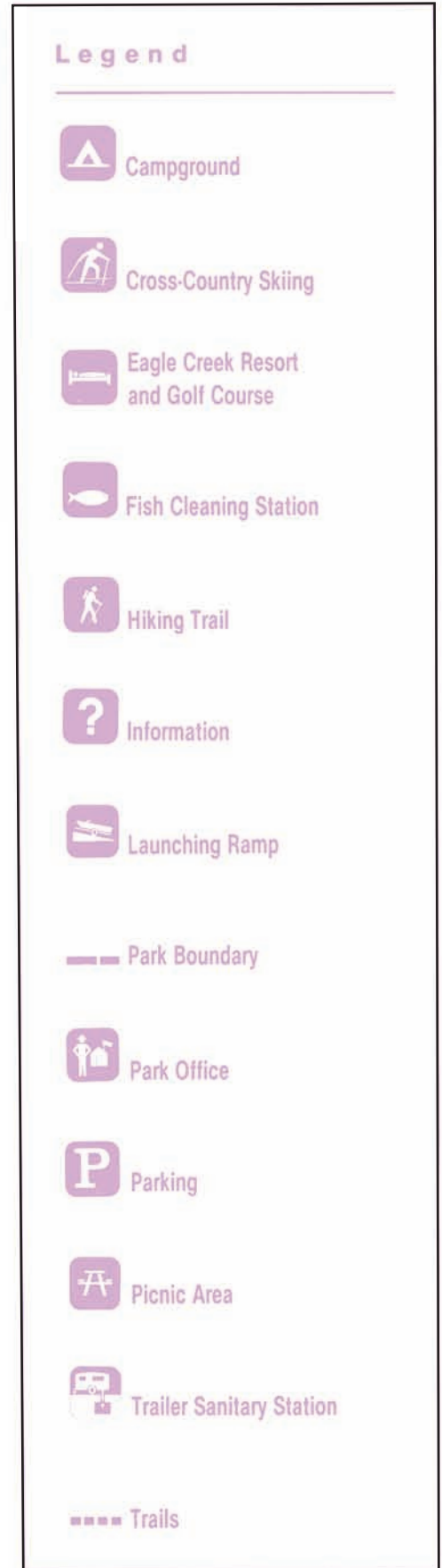
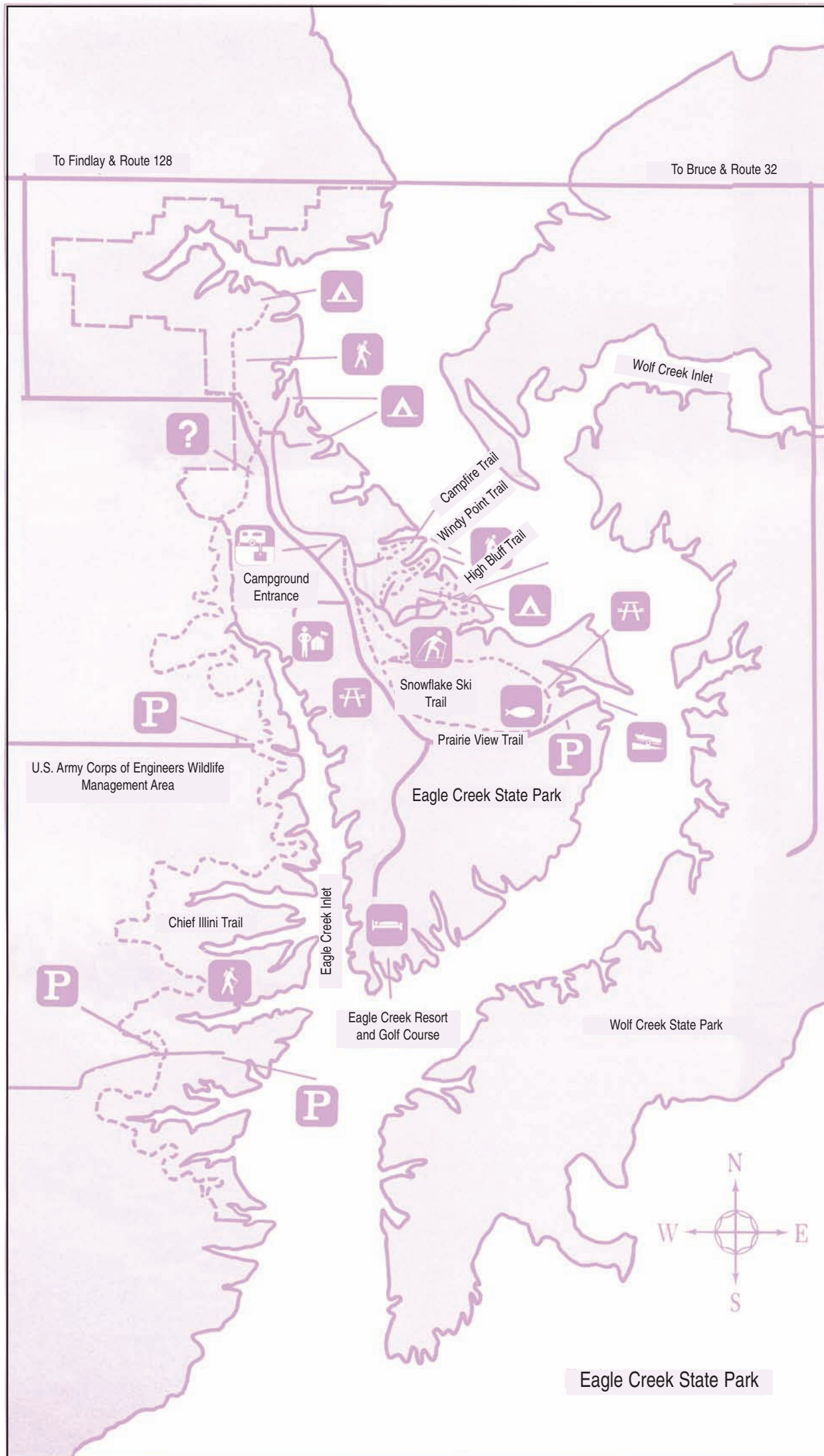
### Hiking

Five marked nature trails are available for tranquil and refreshing sojourns in the forest, as well as a 12-mile trail for the more adventurous hiker and a three-mile cross-country ski trail for invigorating wintertime activity.

### Hunting

Hunting is permitted in designated areas of Eagle Creek. Check with park staff for information regarding species, times, date and required permits.

For more information contact Eagle Creek State Park, Park Office, P.O. Box 16, Findlay, Ill., 62534, (217) 756-8260.



Snowflake Ski Trail 3 miles  
Campfire Trail 1/2 mile  
Windy Point Trail 1 mile

High Bluff Trail 1/2 mile  
Prairie View Trail 1 1/2 miles