



State of Illinois
Illinois Department of Natural Resources

Illinois Public Hunting Areas Report

Illinois Department of Natural Resources
Public Lands - Hunting Effort and Harvest

2011 - 2012 Season
April 1, 2011 to March 31, 2012



*By Gary E. Potts and Connie Wieda-Stark
Division of Wildlife Resources*



Dr. James Herkert, Director
Office of Resource Conservation

John Buhnerkempe, Chief
Division of Wildlife Resources

August 1, 2012

PERMISSION TO QUOTE

Persons wishing to quote from this record or to use it in other forms should first obtain permission from the Project Leader or the Chief of the Division of Wildlife Resources – Illinois Department of Natural Resources.

Equal opportunity to participate in programs of the Illinois Department of Natural Resources (IDNR) and those funded by the U.S Fish and Wildlife Service and other agencies is available to all individuals regardless of race, sex, national origin, disability, age, religion or other non-merit factors. If you believe you have been discriminated against, contact the funding source's civil rights office and/or the Equal Employment Opportunity Officer, IDNR, One Natural Resources Way, Springfield, IL 62702-1271, 217/782-2662; TTY 217/782-9175.

This information may be provided in an alternative format if required. Contact the IDNR Clearinghouse at 217/782-7498 for assistance.

Printed by the authority of the State of Illinois

TABLE OF CONTENTS

Abstract	i
Acknowledgment	ii
Introduction	1
Methods and Procedures	2
Illinois Public Hunting Sites	6
Illinois Public Hunting Sites Location Map	7
Hunting Effort & Wildlife Harvest on Public Hunting Areas:	
Table 1. Region 1	8
Table 2. Region 2	11
Table 3. Region 3	12
Table 4. Region 4	14
Table 5. Region 5	16
Table 6. Illinois public hunting sites with no site data collection	18
Table 7. Summary of hunting effort and wildlife harvest on Illinois public hunting areas by region	19
Table 8. Statewide percent change of the 2011-12 vs. 2010-11 hunting season ...	20
Graphs. 1986-2011 hunting effort, acreage and harvest data	21
Table 9. Mourning Dove hunting effort and harvest	25
Table 10. Hunting effort and wildlife harvest on controlled hunting areas on Illinois public land	26

Table 11. The statewide public lands wildlife habitat development Project – federal aid project W-76-D	27
Table 12. The statewide public lands wildlife habitat development Project (federal aid project W-76-D) percent change 2011-12 vs. 2010-11 seasons	30
Table 13. Waterfowl harvest, hunter trips and success rates during the 2011-12 Illinois waterfowl season at 53 public areas	31
Table 14. Teal harvest, days afield and success rate during the 16 day Teal season in 2011	33
Table 15. Ducks harvested, days afield and success rate during the 2 day Youth hunting season in 2011	33
References	34

Illinois Public Hunting Areas Report – 2011 – 2012 Season

Abstract: The 2011-2012 Hunting season opened on April 1, 2011 and ended March 31, 2012. The Illinois Department of Natural Resources (IDNR) managed 200 public hunting sites during this period. Various methods of data collection were used and information was recorded at 181 public land sites throughout Illinois. There are 19 additional sites that allow public hunting however, currently have no facilities or resources available for on-site data collection. Statewide 275,882 hunting trips resulted in 187,778 units of wildlife harvested on Illinois public lands. This equates to a hunter success ratio of .68 units of wildlife harvested per hunter trip. An 11% increase in hunting effort and a 9% increase in harvest were recorded compared to the 2010-11 hunting season. Mourning dove and waterfowl (duck) harvests can experience extreme harvest fluctuation annually due to liberal bag limits, habitat conditions and fall migration chronology. The 2011 mourning dove harvest increased 10% (2,765 units) and duck harvest increased 33% (23,204 units). Wildlife harvest increases (units in parentheses) were recorded for raccoon 22% (515) and squirrel 5% (500). Harvest decreases are noted for cottontail rabbit -27% (762), ring-necked pheasant (both wild and released) -19% (8,299), bobwhite quail -28% (447), geese -28% (1,382), eastern wild turkey -18% (145), deer archery -13% (491), deer gun -9% (187), and a combination of 12 other species (primarily furbearers and crow) -13% (407) on Illinois public land sites when comparing the 2011-12 harvest data to the 2010-11 hunting season results.

ACKNOWLEDGMENTS

A special note of thanks goes to the many individuals who are responsible for providing information in this report. Site personnel operate check stations and perform other duties associated with collection of daily, weekly, monthly and annual hunting effort and harvest data. District wildlife biologists coordinate the data collection and summarize the final results. Other Illinois Department of Natural Resources (IDNR) administrative and field staff provide technical information and guidance in various ways. The efforts of IDNR staff results in a high quality long term data base that provides valuable information for wildlife management purposes.

INTRODUCTION

The *Illinois Public Hunting Areas Report* is developed each year to provide information on public hunting/trapping effort and wildlife harvest. This year's report provides both hunting and trapping information on 200 Illinois Department of Natural Resources (IDNR) owned, leased and managed public hunting sites.

Three tables (13, 14 and 15) contained in this report, provide specific information concerning the 2011-12 waterfowl season on 53 public land sites where waterfowl hunting is provided in Illinois.

The Federal Aid in Wildlife Restoration Program (resulting from the Pittman-Robertson Act of 1937 – a cost share program administered by the U.S. Fish & Wildlife Service) has either funded or is currently funding wildlife habitat developments, or has acquired land on 116 of the 200 public hunting and trapping areas. Pittman-Robertson (P-R) funding provides wildlife habitat development, maintenance activity, research projects and land acquisition for wildlife management purposes in Illinois. P-R funds also provide funding for Illinois hunter safety course administration and materials. The purpose of the P-R Act is to strengthen the ability of the States to preserve, protect and enhance wild animal and bird resources. Benefits include providing increased public enjoyment of these resources.

METHODS AND PROCEDURES

Methods:

The principal methods used to document hunting/trapping effort and collect harvest data are through manned hunter check stations, permits issued from both the IDNR permit office and the individual site, annual registration and sign in/sign out boxes and through on-line registration and reporting. A majority of these methods have existed on a large number of Illinois public land sites since inception of the respective hunting and trapping programs. Hunter survey questionnaires are periodically used by a few waterfowl sites where limited staff and other complications result in limited or no consistent hunting or trapping data collection. Data is submitted by site staff either monthly or annually for district wildlife biologist summary tabulation. The IDNR **ILCHECK** telephone and on-line check-in systems are utilized for white-tailed deer and wild turkey, providing more detailed harvest information from an increased number of public land sites.

Procedures:

Project personnel that collect hunting/trapping effort and harvest data for this report use four forms.

- **Hunter Harvest Survey (Forms A & B)** – These surveys are completed on a daily basis by hunters during the respective hunting season. It lists such information as the user's name, address, date, hours hunted and species harvested. These forms are then compiled on a monthly basis for submission to the site's district wildlife biologist. Several different styles of waterfowl data collection sheets are used by various sites – the waterfowl summary for B is a representative sample used by waterfowl sites.
- **Monthly Hunter Harvest Summary (Form C)** – This form is utilized by site staff to compile monthly hunting effort and harvest data. The sites list their name, region, year and month the data is compiled. Hunter trips are recorded by species for dove, deer, wild turkey and squirrels. Waterfowl hunting sites use a modified version of this form that lists duck and goose species. Hunter trips for individuals pursuing upland game species; rabbit, quail, woodcock, pheasant and other species are usually grouped.
- **2011-2012 Hunting Effort and Harvest Report Summary – For Illinois Public Hunting Sites (Form D)** – This annual report form is compiled by each respective district wildlife biologist. The biologists tabulate each of the monthly report submissions (Form D), from April 1, 2011 through March 31, 2012, received from their public land sites. This form lists summary information that is used to compile the 2011-2012 *Illinois Public Hunting Areas Report*.

Daily Hunter Harvest Summary (FORM A)

Area: _____ Year: _____ Manned Check Station () Yes () No Sheet No. _____

HUNTERS PLEASE PROVIDE COMPLETE INFORMATION

Hunters Name / Address	Month Day	Hours Hunted	Dove	Squirrel	Rabbit	Pheasant	Quail	Deer Gun	Deer Bow	Other Species Number Harvest & Hours Hunted
Total Each Column										

Daily Waterfowl Hunter Harvest Summary (FORM B)

Name & Address	Check-In Time	Check-Out Time	Total Harvest	Mallard	Wood Duck	Widgeon	Gadwell	Teal	Shoveler	Other duck species - list species & no. List geese species harvested & no.
Total Each Column										

Monthly Hunter Harvest Summary (FORM C)

Site Name : _____ Region: _____

Month: _____ Year: _____

Species Hunted	Number of Hunter Trips	Number Harvested
1. Dove		
2. Squirrel		
3. Rabbit		
4. Pheasant		
5. Quail		
6. Deer (Bow)		
7. Deer (Gun)		
Name Other Species		
8.		
9.		
10.		
Total all Columns		

2011-2012 Hunting Effort and Harvest Report-Summary for Illinois Public Hunting Sites (FORM D)

District Wildlife Biologist:

Sites	Total Acres	Total Acres Hunted	Hunter Trips	Dove	Squirrel	Rabbit	Pheasant	Quail	Ducks	Geese	Wild Turkey	Deer/ Gun	Deer/ Bow	Total Other Species	Total Units Harvested
1															0
2															0
3															0
4															0
5															0
6															0
7															0
8															0
9															0
10															0
11															0
12															0
13															0
14															0
15															0
16															0
17															0
18															0
TOTALS	0	0	0	0	0	0	0	0	0	0	0	0	0	0	0

Region 1 Sites	Beaver	Coot	Coyote	Crow	Fox	Mink	Muskrat	Opossum	Raccoon	River Otter	Skunk	Snipe	Wood-chuck	Wood-cock	Totals
1															0
2															0
3															0
4															0
5															0
6															0
7															0
8															0

ILLINOIS PUBLIC HUNTING SITES

REGION 1

1. Anderson Lake SFWA
2. Apple River Canyon SP Complex
3. Argyle Lake SP
4. Banner Marsh SFWA
5. Big Bend SFWA
6. Big River SF
7. Bradford SHA
8. Castle Rock SP
9. Donnelley SFWA
10. Double "T" SFWA
11. Dublin Highlands SHA
12. Franklin Creek SNA
13. French Bluff SNA
14. George S. Park SNA
15. Green River SWA
16. Hanover Bluff SNA
17. Hennepin Canal ST
18. Ilo Dillin SHA
19. Johnson Sauk Trail SRA
20. Jubilee College SP
21. Kishwaukee River SNA
22. Lake DePue SFWA
23. Lake Le-Aqua-Na SRA
24. Little Rock Creek SHA
25. Lowden/Miller SF
26. Lowden Memorial SP
27. Mackinaw River SFWA
28. Manito SHA
29. Marseilles SFWA
30. Marshall SFWA
31. Matthiessen SP
32. Mautino SFWA
33. Maytown SHA
34. Miller-Anderson Woods SNA
35. Mississippi-Palisades SP
36. Mississippi River Pool #16 SFWA
37. Mississippi River Pool #17 SFWA
38. Mississippi River Pool #18 SFWA
39. Mitchell's Grove SNA
40. Morrison-Rockwood SP
41. Nachusa Prairie SNA
42. Pekin Lake SFWA
43. Powerton Lake SFWA
44. Rall Woods SNA
45. Rice Lake SFWA
46. Rock Cut SP
47. Rockton Bog SNA
48. Sand Prairie SHA
49. Sandy Ford SNA
50. Shabbona Lake SP
51. Sinnissippi Lake SWA
52. Snakeden Hollow SFWA
53. Spoon River SF
54. Spring Lake SFWA
55. Starved Rock SP
56. Steward SHA
57. Tapley Woods SNA
58. Victoria SHA
59. Wards Grove SNA
60. White Pines SP
61. Whitefield SHA
62. Winston Tunnel SNA
63. Witkowsky SWA
64. Woodford County SFWA

REGION 2

65. Chain-O-Lakes SP
66. Des Plaines SFWA
67. Des Plaines Game Propagation Center NC
68. Heidecke Lake FWA/GLP SNA
69. I & M Canal ST
70. James Pate Phillip SP
71. Kankakee River SP
72. Mazonia-Braidwood SFWA
73. Momence Wetlands SNA
74. Moraine Hills SP

75. Redwing Slough/ Deer Lake SNA
76. Silver Springs SFWA
77. Volo-Wilson Bog SNA
78. William W. Powers SRA

REGION 3

79. Birkbeck SHA
80. Butterfield Trail SRA
81. Clifton SHA
82. Clinton Lake SRA
83. Eagle Creek SRA
84. Finrock SHA
85. Fox Ridge SP
86. Gifford SHA
87. Hallsville SHA
88. Harry "Babe" Woodyard SNA
89. Herschel Workman SHA
90. Hidden Springs SF
91. Hindsboro SHA
92. Hurricane Creek (Paul C. Burrus) SHA
93. Iroquois County SFWA
94. Kickapoo SRA
95. Lincoln Trail SP
96. Loda SHA
97. Middle Fork SFWA
98. Milks Grove SHA
99. Moraine View SRA
100. Perdueville SHA
101. Saybrook SHA
102. Shelbyville SFWA
103. Sibley SHA
104. Walnut Point SP
105. Weldon Springs SP -(Piatt County Unit)
106. Willow Creek SHA
107. Wolf Creek SP

REGION 4

108. Batchtown SFWA
109. Beaver Dam SP
110. Bohm's Woods
111. Calhoun Point SFWA
112. Cedar Glen SNA
113. Clear Lake SHA
114. Coffeen Lake SFWA
115. Copperhead Hollow SWA
116. Edward R. Madigan SFWA
117. Eldon Hazlet SRA
118. Ft. de Chartres SM
119. Ft. Kaskaskia SM
120. Frank Holten SP
121. Freeman Mine SHA
122. Fuller Lake SFWA
123. Glades-12 Mile Island SFWA
124. Godar-Dia.-Hurricane Is. SFWA
125. Goode's Woods NP
126. Helmbold Slough SFWA
127. Horseshoe Lake - Madison SP
128. Horseshoe Lake - Madison SP - (Island Units Complex)
129. Illinois River SFWA
130. Jim Edgar Panther Creek SFWA
131. Kaskaskia River SFWA
132. Kidd Lake SNA
133. Mississippi River - Pool #21 SFWA
134. Mississippi River - Pool #22 SFWA
135. Mississippi River - Pool #24 SFWA
136. Mississippi River - Pool #25 SFWA
137. Oakford SHA
138. Peabody River King SFWA
139. Pere Marquette SP
140. Piasa Island SFWA
141. Randolph County SRA
142. Ray Norbut SFWA
143. Red's Landing SFWA
144. Rip-Rap Landing SFWA
145. Sand Ridge SF

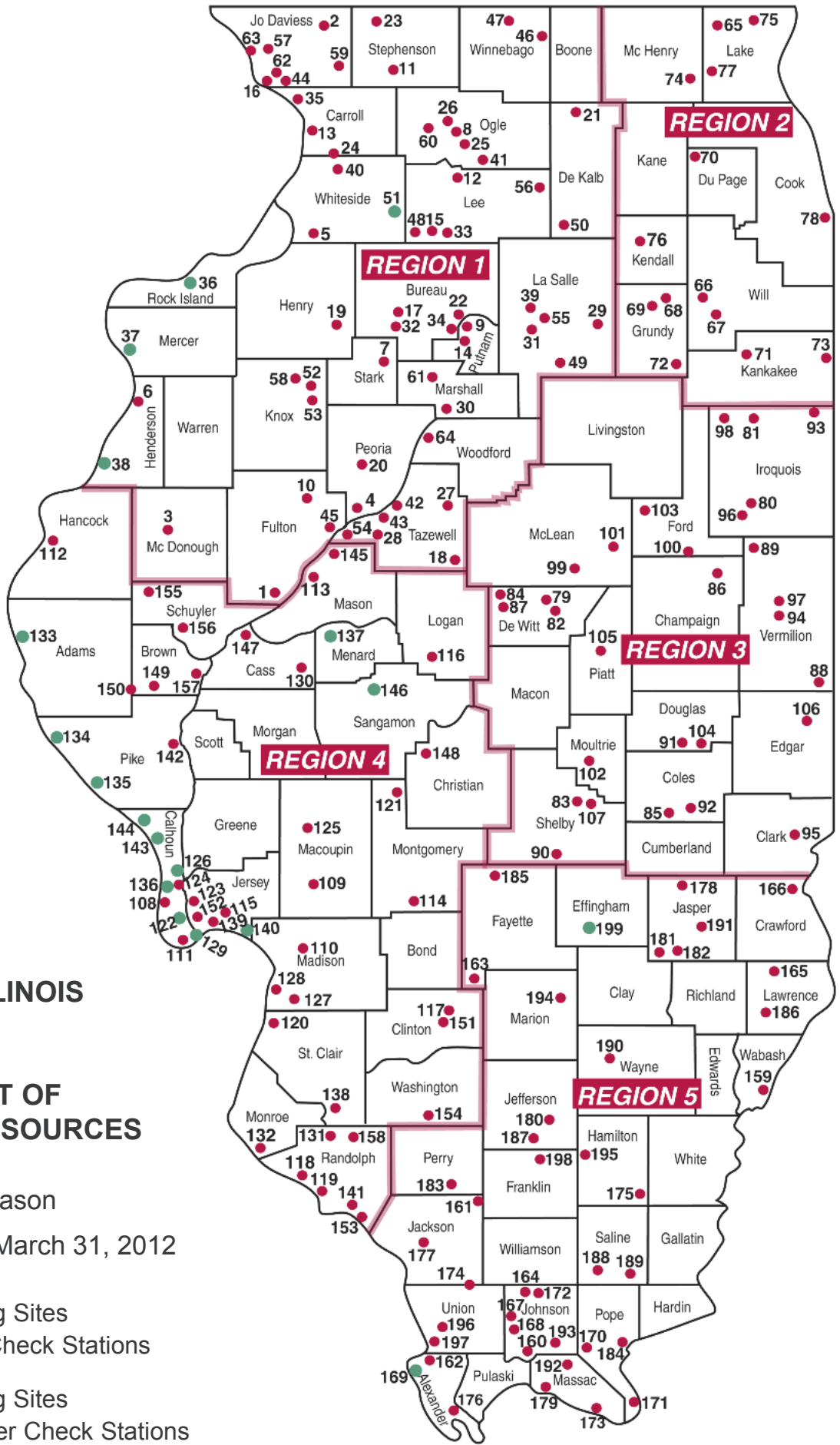
146. Sangamon River SFWA
147. Sanganois SFWA
148. Sangchris Lake SRA
149. Siloam Springs SP -(Buckhorn Unit)
150. Siloam Springs SP
151. South Shores SP
152. Stump Lake SFWA
153. Turkey Bluffs SFWA
154. Washington County SRA
155. Weinberg-King SP
156. Weinberg-King SP -(Scripps Unit)
157. Weinberg-King SP -(Spunky Bot. Unit)
158. World Shooting & Recreational Center

REGION 5

159. Beall Woods SP
160. Cache River SNA
161. Campbell Pond SHA
162. Cape Bend SFWA
163. Carlyle Lake SFWA
164. Cedar-Draper Bluff SNA
165. Chauncey Marsh SNA
166. Crawford County SFWA
167. Cypress Pond SNA
168. Deer Pond SNA
169. Devil's Island SFWA
170. Dixon Springs SP
171. Dog Island SFWA
172. Ferne Clyffe SP
173. Ft. Massac SP
174. Giant City SP
175. Hamilton County SFWA
176. Horseshoe Lake-Alexander SFWA
177. Kinkaid Lake SFWA
178. Meeke SHA
179. Mermet Lake SFWA
180. Mt. Vernon Game Propagation Ctr. NC
181. Newton Lake SFWA
182. Prairie Ridge SNA
183. Pyramid SP
184. Rauchfess Hill
185. Ramsey Lake SRA
186. Red Hills SP
187. Rend Lake SFWA
188. Sahara Woods SFWA
189. Saline County SFWA
190. Sam Dale Lake SFWA
191. Sam Parr SFWA
192. Sielbeck Forest SNA
193. Skinner Farm SFWA
194. Stephen A. Forbes SRA
195. Ten Mile Creek SFWA
196. Trail of Tears SF
197. Union County SFWA
198. Wayne Fitzgerrell SRA
199. Wildcat Hollow SHA

KEY

SFWA	-State Fish and Wildlife Area
SP	-State Park
SF	-State Forest
SNA	-State Natural Area
SWA	-State Wildlife Area
SHA	-State Habitat Area
SM	-State Memorial
SRA	-State Recreation Area
ST	-State Trail
NC	- Not Classified
NP	- Nature Preserve
CTR	- Center



STATE OF ILLINOIS

**ILLINOIS
DEPARTMENT OF
NATURAL RESOURCES**

2011 - 2012 Season
April 1, 2011 - March 31, 2012

- Public Hunting Sites
With Hunter Check Stations
- Public Hunting Sites
With No Hunter Check Stations

Table 1. Hunting effort and wildlife harvest on public areas in Region 1, 2011-2012 season

Region 1 Sites	Total Acres	Total Acres Hunted	Hunter Trips	Dove	Squirrel	Rabbit	Pheasant	Quail	Ducks	Geese	Wild Turkey	Deer/ Gun	Deer/ Bow	Total Other Species	Total Units Harvested
1 Anderson Lake SFWA	2248	2000	2428		11	3			2741	7			3	2	2767
2 Apple River Canyon SP - Thompson/Salem Units	1484	960	696		40	4					5	8	7	3	67
3 Argyle Lake SP	1800	950	5664		50	1					5	3	18		77
4 Banner Marsh SFWA	4432	3000	2866	115		31			1340	170			19		1675
5 Big Bend SFWA	2376	2338	1063	289	21	33	10	18			10		25	10	416
6 Big River SF	2997	2970	1087	107	131	55					10	18	15		336
7 Bradford SHA	103.5	100	26				4								4
8 Castle Rock SP	2000	1620	1562		122						2	36	26		186
9 Donnelley SFWA	780	676	548						223	3					226
10 Double "T" SFWA	1957	377	473	573					160	73					806
11 Dublin Highlands SHA	122	122	24			1									1
12 Franklin Creek SNA	638	635	729									7	23		30
13 French Bluff SNA	344	342	145								1	3	3		7
14 George S. Park SNA	80	80	88										1		1
15 Green River SWA a/	2565	2515	2736	718	64	69	652	4			15	23	21		1566
16 Hanover Bluff SNA	247	231	274		155							1	3		159
17 Hennepin Canal ST	5348	4854	244	103									7	608	718
18 Ilo Dillin SHA	79	75	52			2	5	1						1	9
19 Johnson-Sauk Trail SRA b/	1361	862	2202	901	60	15	1075				1		11	61	2124
20 Jubilee College SP	3222	2900	3626	17	38	6					4	49	57	41	212
21 Kishwaukee River SNA	570	484	878										10		10
22 Lake DePue SFWA	2351	1700	876						732	82					814
23 Lake-Le-Aqua-NA SRA	715	650	216	380								13	1	4	398
24 Little Rock Creek SHA	150	148	40				4							5	9
25 Lowden-Miller SF	2225	2225	2352									39	35		74
26 Lowden Memorial SP	219	80	101										2		2
SUB TOTALS	40414	32894	30996	3203	692	220	1750	23	5196	335	53	200	288	734	12694

Continues on Page -9-

Table 1. Hunting effort and wildlife harvest on public areas in Region 1, 2011-2012 season

Region 1 Sites	Total Acres	Total Acres Hunted	Hunter Trips	Dove	Squirrel	Rabbit	Pheasant	Quail	Ducks	Geese	Wild Turkey	Deer/ Gun	Deer/ Bow	Total Other Species	Total Units Harvested
27 Mackinaw River SFWA a/	1415	1400	2131	61	120	18	17	2				17	25		260
28 Manito SHA	78	70	32			1		2							3
29 Marseilles SFWA	2515	2239	1897	43	209	25	6				10	84	21		398
30 Marshall SFWA	6539	4876	3626		113				1843	216	3	12	15	47	2249
31 Matthiessen SP c/	1935	1500	636	1259	83										1342
32 Mautino SFWA	911	891	677	12									11	14	37
33 Maytown SHA	160	159	53												0
34 Miller-Anderson Woods SNA	522	522	557									16	9		25
35 Mississippi-Palisades SP	2550	1500	1445								6	9	27		42
36 Mitchell's Grove SNA c/	185	170	22									6	3		9
37 Morrison-Rockwood SP	1152	1100	456	216	161							30	2		409
38 Nachusa Prairie SNA	72	72	21												0
39 Pekin Lake SFWA	1488	1200	479						21	20			8		49
40 Powerton Lake SFWA	1400	855	450						393	22				52	467
41 Rall Woods SNA	109	109	445		72						2	3	13		90
42 Rice Lake SFWA	6811	1490	5075						6551	70			9	28	6658
43 Rock Cut SP	2743	2571	151									17		15	32
44 Rockton Bog SNA	119	119	137										2		2
45 Sand Prairie SHA	316	316	137	369			4								373
46 Sandy Ford SNA c/	203	203	187		52										52
47 Shabbona Lake SP	1550	776	1965	49					10	4			67	145	275
48 Snakeden Hollow SFWA	2500	2500	392	658					24	27			6		715
49 Spoon River SF	1680	1650	1494		178						10	20	44		252
50 Spring Lake SFWA	2031	1500	2415		74				1726	74			9	219	2102
51 Starved Rock SP	2817	2817	3741						90	17		51	87		245
52 Steward SHA	80	80	32			1	10								11
53 Tapley Woods SNA	259	259	313		186						1	3	2		192
SUB TOTALS	42140	30944	28966	2667	1248	45	37	4	10658	450	32	268	360	520	16289

Table 1. Hunting effort and wildlife harvest on public areas in Region 1, 2011-2012 season

Region 1 Sites	Total Acres	Total Acres Hunted	Hunter Trips	Dove	Squirrel	Rabbit	Pheasant	Quail	Ducks	Geese	Wild Turkey	Deer/ Gun	Deer/ Bow	Total Other Species	Total Units Harvested
54 Victoria SHA	241	241	30				17								17
55 Wards Grove SNA	335	332	198									7	7		14
56 White Pines State Park	385	300	39									5	3		8
57 Whitefield PHA	118	117	17				3	2							5
58 Winston Tunnel SNA	227	207	203		8							6	1		15
59 Witkowsky SWA	931	931	1063		56	15					6	17	24		118
60 Woodford SFWA	5426	1840	3080						4226	64				4	4294
Sub Total	7663	3968	4630	0	64	15	20	2	4226	64	6	35	35	4	4471
TOTALS:	90217	67806	64592	5870	2004	280	1807	29	20080	849	91	503	683	1258	33454

a/Controlled permit pheasant hunting area

b/ Daily drawing pheasant hunting area

c/ Matthiessen SP, Mitchell's Grove and Sandy Ford SNA - Deer hunter effort is included in Starved Rock data.

Table 1.1. Site specific - other species harvest totals.

Region 1 Sites	Beaver	Coot	Coyote	Crow	Fox	Mink	Muskrat	Opossum	Raccoon	Skunk	Snipe	Wood-chuck	Wood-cock	Totals
1 Anderson Lake SFWA		2												2
2 Apple River Canyon SP/Thompson/Salem Units			3											3
3 Big Bend SFWA									10					10
4 Hennepin Canal ST	110					95	209	1	193					608
5 Johnson-Sauk Trail SRA b/								19	42					61
6 Jubilee College SP							7	4	28	2				41
7 Lake -Le-Aqua-Na SRA									4					4
8 Little Rock Creek HA								1	4					5
9 Marshall SFWA	15						1		31					47
10 Mautino FWA	2					1	4		7					14
11 Powerton Lake SFWA		52												52
12 Rice Lake SFWA		28												28
13 Rock Cut SP	4								11					15
14 Shabbona Lake SP							10		135					145
15 Spring Lake SFWA	21	149					49							219
16 Woodford SFWA	4													4

Table 2. Hunting effort and wildlife harvest on public areas in Region 2, 2011-2012 season

Region 2 Sites	Total Acres	Total Acres Hunted	Hunter Trips	Dove	Squirrel	Rabbit	Pheasant	Quail	Ducks	Geese	Wild Turkey	Deer/ Gun	Deer/ Bow	Total Other Species	Total Units Harvested
1 Chain O' Lakes SP	b/ 5926	2578	2297	26	31		53		1138	62		3	12	95	1420
2 Des Plaines SFWA	a/ 5012	3500	10400	897		3	7632	5	150	35		11	48	6	8787
3 Des Plaines Game Propagation Center NC	240	134	908										16	38	54
4 Heidecke Lake SFWA & GLPSNA	4313	3813	2827						398	24		48	29		499
5 Illinois & Michigan Canal ST	3000	2500	1998											78	78
6 James "Pate" Philip SP	507	415	287										6		6
7 Kankakee River SP	a/ 4000	2000	4796	833	181	9	1511		193	25	2		30	39	2823
8 Mazonia-Braidwood SFWA	5319	3032	4428			6			1970	210			13	5	2204
9 Momence Wetlands SNA	518	481	445		57				42	2	4	1	13		119
10 Moraine Hills SP	2560	2385	367									13	5		18
11 Red-Wing Slough/Deer Lake SNA	711	200	175						89	40					129
12 Silver Springs SFWA	b/ 1314	900	4958	979	76		5025						15		6095
13 Volo-Wilson Bog SNA	1243	1243	355										16		16
14 William W. Powers SRA	650	419	504						232	55				5	292
TOTALS:	35313	23600	34745	2735	345	18	14221	5	4212	453	6	76	203	266	22540

a/ Controlled permit pheasant hunting area

b/ Public/private partnership pheasant hunting area

Table 2.1. Site specific - other species harvest totals.

Region 2 Sites	Beaver	Coot	Coyote	Crow	Fox	Mink	Muskrat	Opossum	Raccoon	Skunk	Snipe	Wood-chuck	Wood-cock	Totals
1 Chain O' Lakes SP		95												95
2 Des Plaines SFWA			6											6
3 Des Plaines Game Propagation Ctr.					1			21	16					38
4 Illinois & Michigan Canal ST	24						31	11	12					78
5 Kankakee River SP	4	2	5				3	11	14					39
6 Mazonia-Braidwood SFWA		5												5
7 William W. Powers SRA		5												5

Table 3. Hunting effort and wildlife harvest on public areas in Region 3, 2011-2012 season

Region 3 Sites	Total Acres	Total Acres Hunted	Hunter Trips	Dove	Squirrel	Rabbit	Pheasant	Quail	Ducks	Geese	Wild Turkey	Deer/ Gun	Deer/ Bow	Total Other Species	Total Units Harvested
1 Birkbeck SHA	80	80	44				25								25
2 Butterfield Trail SRA	142	120	701		215						4	2	11	8	240
3 Clifton SHA	80	79	30				16								16
4 Clinton Lake SRA a/	9937	6082	7407	618	671	145	58	2	860	222	11	24	261	150	3022
5 Eagle Creek SRA	2313	520	1119		45	1	1						37	13	97
6 Finrock SHA b/	377	377	53				43								43
7 Fox Ridge SP	1516	945	990	66	65	15	1	1			3	21	6	22	200
8 Gifford SHA	100	100	31			3	11								14
9 Hallsville SHA	80	80	28				20	4							24
10 Harry 'Babe' Woodyard SNA	1083	1049	1344	58	126	4	5				6			9	208
11 Herschel Workman SHA	135	135	53				5								5
12 Hidden Springs SF	1129	963	1377	6	301	20					3	7	29	78	444
13 Hindsboro SHA	90	85	60			3	8	3					1		15
14 Hurricane Creek (Paul C. Burrus) SHA	376	376	27				2	1							3
15 Iroquois County SFWA a/	2788	2185	5358	881	164		3103				2			83	4233
16 Kickapoo SRA	3981	2381	2707		214	26		12			7	43	58	50	410
17 Lincoln Trail SP	1023	857	474										22	52	74
18 Loda SHA	160	160	37			3	14								17
19 Middle Fork SFWA	2813	2628	3697	12	194	88	2	11			7	58	82	121	575
20 Milks Grove SHA	79	79	38			1	18								19
21 Moraine View SRA a/	1687	1191	2780	142	233	176	59				7		59	90	766
22 Perdueville SHA	120	120	30				8								8
23 Saybrook SHA	646	646	65				65								65
24 Shelbyville SFWA	6450	6350	9284	902	628	288	48	18	1526	260	5	28	69	268	4040
25 Sibley SHA	635	630	79				104								104
Sub - Totals	37820	28218	37813	2685	2856	773	3616	52	2386	482	55	183	635	944	14667

Continues on Page -13-

Table 3. Hunting effort and wildlife harvest on public areas in Region 3, 2011-2012 season

Region 3 Sites	Total Acres	Total Acres Hunted	Hunter Trips	Dove	Squirrel	Rabbit	Pheasant	Quail	Ducks	Geese	Wild Turkey	Deer/ Gun	Deer/ Bow	Total Other Species	Total Units Harvested
26 Walnut Point SP	592	573	541		89								9	59	157
27 Weldon Springs SP-(Platt Co. Unit)	770	656	727		46		4					6	24		80
28 Willow Creek SHA	87	87	30			2	4								6
29 Wolf Creek SP	2000	500	900				1					13	67	13	94
Sub Totals	3449	1816	2198	0	135	2	9	0	0	0	0	19	100	72	337
TOTALS:	41269	30034	40011	2685	2991	775	3625	52	2386	482	55	202	735	1016	15004

a/ Controlled permit pheasant hunting area

b/ No Hunter Trip data was collected.

Table 3.1. Site specific - other species harvest totals.

Region 3 Sites	Beaver	Coot	Coyote	Crow	Fox	Mink	Muskrat	Opossum	Raccoon	Skunk	Snipe	Wood-chuck	Wood-cock	Totals
1 Butterfield Trail SRA									8					8
2 Clinton Lake SRA		29	1					8	107				5	150
3 Eagle Creek SRA									13					13
4 Fox Ridge SP									22					22
5 Harry 'Babe' Woodyard SNA			1						8					9
6 Hidden Springs SF				4					74					78
7 Iroquois State WA				1					4				78	83
8 Kickapoo SRA				1					48				1	50
9 Lincoln Trail SP									52					52
10 Middle Fork SFWA				4				1	114				2	121
11 Moraine View SRA									89				1	90
12 Shelbyville SFWA		23	4					12	225				4	268
13 Walnut Point SP									59					59
14 Wolf Creek SP									13					13

Table 4. Hunting effort and wildlife harvest on public areas in Region 4, 2011-2012 season

Region 4 Sites	Total Acres	Total Acres Hunted	Hunter Trips	Dove	Squirrel	Rabbit	Pheasant	Quail	Ducks	Geese	Wild Turkey	Deer/ Gun	Deer/ Bow	Total Other Species	Total Units Harvested
1 Batchtown SFWA (MRA) c/	2069	2069	3924						7021	33				17	7071
2 Beaver Dam SP	744	430	160		10						1		14		25
3 Bohm Woods NP	90	90	55										3		3
4 Calhoun Point SFWA (MRA) c/	2300	2250	2959						2718	22					2740
5 Cedar Glen SNA	1202	1100	220									18	6		24
6 Clear Lake SHA d/	1460	760	272						470	4					474
7 Coffeen Lake SFWA	3180	3055	1875	254	28	3	18	8	76	41	15	12	34	351	840
8 Edward R. Madigan SFWA a/	750	300	338	2446		5	16								2467
9 Eldon Hazlet SRA a/	3107	2300	3862	1	7		4329				2	1	17	77	4434
10 Ft. deChartres SM	1100	800	53									8	4		12
11 Ft. Kaskaskia SM	275	140	48										2		2
12 Frank Holten SP	1080	300	199										8		8
13 Freeman Mine SHA	179	24	100			5	16		28	3					52
14 Glades-12 Mile Island SFWA (MRA) c/	1454	1450	3191						3463	26				1	3490
15 Godar-Dia.-Hurr.Isl.SFWA (MRA) c/	2611	2607	3724						4952	55					5007
16 Goode's Woods NP	40	40													0
17 Horseshoe Lake SP b/	2854	2000	5830	3163			728	5	4304	144	2		56	586	8988
18 Horseshoe Lake SP (Gabaret, Mosenthein, & Chouteau Island Units)	3265	3265	3709	19	109	21			49		15		53	323	589
19 Jim Edgar Panther Creek SFWA a/	16449	16268	10643	3106	587	135	3949	206			74	108	220	61	8446
20 Kaskaskia River SFWA	16000	14000	3694	145	30	22			1667	116	6	107	77	417	2587
21 Kidd Lake Marsh SNA	465	465	57						33	1			3		37
22 Peabody River King SFWA	2000	1000	204	92	10	4		35			6		6	6	159
23 Pere Marquette SP & Copperhead Holl.SWA)	9152	7647	2228		265						16	29	28	5	343
24 Randolph County SRA	1031	750	875	73	68	11					9		19	23	203
25 Ray Norbut SFWA	1380	1290	818	109	55				7		9	19	29	122	350
26 Sand Ridge SF a/	7113	6500	4678	12	763	2	647	3			51	60	64	60	1662
27 Sanganois SFWA	9602	6860	5195						7865	9		9	14		7897
28 Sangchris Lake SRA a/	5280	2380	4826	1849	155		26	22	1285	126	2	4	120	62	3651
29 Siloam Springs SP Buckhorn Unit	2250	2200	2242	5	45	7					14	16	72	66	225
30 Siloam Springs SP	3323	2380	1806		132						8	30	63	33	266
31 South Shore SP	794	139	169								3		4	16	23
32 Stump Lake SFWA (MRA) c/	2967	2907	4236						4281	31					4312
Sub-Total	105566	87766	72190	11274	2264	215	9729	279	38219	611	233	421	916	2226	66387

Continues on Page -15-

Table 4. Hunting effort and wildlife harvest on public areas in Region 4, 2011-2012 season

Region 4 Sites	Total Acres	Total Acres Hunted	Hunter Trips	Dove	Squirrel	Rabbit	Pheasant	Quail	Ducks	Geese	Wild Turkey	Deer/ Gun	Deer/ Bow	Total Other Species	Total Units Harvested
33 Turkey Bluffs SFWA	2265	2250	1068	5	99	9					15	29	15	10	182
34 Washington County CA	1440	750	945	21	175	2					10		12	153	373
35 Weinberg-King SP	772	751	505	48	129	24						14	2		217
36 Weinberg-King SP - Scripps Unit	736	736	795		36	1					4	10	11		62
37 Weinberg-King SP - Spunky Bott. Unit	833	800	546		7	1			38		1	12	1	57	117
38 World Shooting & Recreational Ctr.	1600	125	24				44								44
Sub-Total	7646	5412	3883	74	446	37	44	0	38	0	30	65	41	220	995
TOTAL:	113212	93178	76073	11348	2710	252	9773	279	38257	611	263	486	957	2446	67382

a/ Controlled permit pheasant hunting area

b/ Public/private partnership pheasant hunting area

c/ Part of the Mississippi River Fish & Wildlife Management Area -(MRA)

Table 4.1. Site specific - other species harvest totals.

Region 4 Sites	Beaver	Coot	Coyote	Crow	Fox	Mink	Muskrat	Opossum	Raccoon	Skunk	Snipe	Wood-chuck	Wood-cock	Totals
1 Batchtown SFWA (MRA)		17												17
2 Coffeen Lake SFWA	8					3	43	14	283					351
3 Eldon Hazlet SP								1	76					77
4 Glades-12 Mile Island SFWA (MRA)		1												1
5 Horseshoe Lake SP	1	166		394			12		13					586
6 Horseshoe Lake SP Gabaret, Mosenthein, & Chouteau Is. Unit)				319					2	1			1	323
7 Jim Edgar Panther Creek SFWA			7						54				2	63
8 Kaskaskia River SFWA	59					3	1	38	310	6				417
9 Peabody River King SFWA									6					6
10 Pere Marquette SP (Copperhead Holl.SWA)			5											5
11 Randolph County SRA									23					23
12 Ray Norbut SFWA	2		1			1	15	29	73	1				122
13 Sand Ridge SF			7	4					6				44	61
14 Sangchris Lake SRA	1		4						57					62
15 Siloam Springs SP Buckhorn Unit								19	46	1				66
16 Siloam Spring SP								1	32					33
17 South Shore SP								9	7					16
18 Turkey Bluffs SFWA									10					10
19 Washington County WA									23	130				153
20 Weinberg-King SP - Spunky Bottoms Unit						1	4	8	44					57

Table 5. Hunting effort and wildlife harvest on public areas in Region 5, 2011-2012 season

Region 5 Sites	Total Acres	Total Acres Hunted	Hunter Trips	Dove	Squirrel	Rabbit	Pheasant	Quail	Ducks	Geese	Wild Turkey	Deer/ Gun	Deer/ Bow	Total Other Species	Total Units Harvested
1 Beall Woods SP	630	516	135										4		4
2 Cache River SNA	14489	11946	3432		235	61			650	3	10	42	7	1	1009
3 Campbell Pond SHA	520	520	125		92						1	5	6		104
4 Cape Bend SFWA	1380	1375	102						32						32
5 Carlyle Lake SFWA	9914	9868	7628						8065	207	7	41	31	39	8390
6 Cedar-Draper Bluff SNA	1300	1275	279		14						6	21	5		46
7 Chauncey Marsh SNA	667	519	133		4						1	5	5	2	17
8 Crawford County SFWA	1129	1100	1179		223	29		3			3	40	22	15	335
9 Cypress Pond SNA	1047	1047	418		4	1					1	18	8		32
10 Deer Pond SNA	230	190	119								1	4	6		11
11 Dixon Springs SP	1087	265	115		4						2	10	11		27
12 Dog Island SWA	221	220	317		20	2			8			3	7	2	42
13 Ferne Clyffe SP	1125	450	294		41	3					6	11	6		67
14 Ft. Massac SP	1450	984	565	15	29	3		3				9	21		80
15 Giant City SP	4055	2255	1362		116	5					15	47	22		205
16 Hamilton County SFWA	1683	1530	543		83	50		35			9	26	47	28	278
17 Horseshoe Lake SFWA	11692	4190	2426		21	1			2226	14		5	14	42	2323
18 Kinkaid Lake SFWA	3350	3000	658	181	73			5	22		10	59	18	7	375
19 Meeker SHA	72	71	25								1		2		3
20 Mermet Lake SFWA	2726	1700	2151		59				1791	33	6		16		1905
21 Mt. Vernon GPC NC	700	600	498	359		26					6				391
22 Newton Lake SFWA	6500	5600	1899	4	44	40	3	46	178	25	12	45	49	5	451
23 Prairie Ridge SNA	2694	2614	109									4	1		5
24 Pyramid SRA	19700	15774	10882	3929	83	104	1	438	3077	555	14	35	127	61	8424
25 Ramsey Lake SRA	b/ 1961	1610	1331	22	279	11	713	4			10		19	27	1085
26 Rauchfuss Hill	150	150	42												0
27 Red Hills SP	967	736	515		8	3					4		12		27
28 Rend Lake SFWA	12690	7690	7800	201					8698	238	10	23	44		9214
29 Sahara Woods SNA	4000	4000	592									10	32		42
30 Saline County SFWA	1450	1000	817		142	3				2	5	33	7		192
31 Sam Dale Lake SFWA	1301	800	998	62	79	9		16			7		37	29	239
32 Sam Parr SFWA	1172	840	821	1266	58	10		14			2		18	86	1454
Sub Total	112052	84435	48310	6039	1711	361	717	564	24747	1077	149	496	604	344	36809

Continues on Page -17-

Table 5. Hunting effort and wildlife harvest on public areas in Region 5, 2011-2012 season

Region 5 Sites	Total Acres	Total Acres Hunted	Hunter Trips	Dove	Squirrel	Rabbit	Pheasant	Quail	Ducks	Geese	Wild Turkey	Deer/ Gun	Deer/ Bow	Total Other Species	Total Units Harvested
33 Sielbeck Forest SNA	385	385	82									4	4	1	9
34 Skinner Farm SHA	221	70	205	68	1	15						2	1	1	88
35 Stephen A. Forbes SRA	3103	2580	1598	101	101	2		5	76	2	13		42	32	374
36 Ten Mile Creek SFWA c/	5824	4995	2575	1367	170	351		206	625	73	32	83	52	88	3047
37 Trail of Tears SF	5019	4784	650		192						14	19	1	4	230
38 Union County SFWA	6202	2800	2317	6	175				2371	2			24		2578
39 Wayne Fitzgerrell SRA a/	3010	1800	4707				5886				10		53		5949
Sub Total	23764	17414	12134	1542	639	368	5886	211	3072	77	69	108	177	126	12275
TOTALS:	135816	101849	60444	7581	2350	729	6603	775	27819	1154	218	604	781	470	49084

b/ Public/private partnership pheasant hunting area

c/ 61% of hunter permits returned

Table 5.1. Site specific - other species harvest totals.

Region 5 Sites	Beaver	Coot	Coyote	Crow	Fox	Mink	Muskrat	Opossum	Raccoon	Skunk	Snipe	Wood-chuck	Wood-cock	Totals
1 Cache River SNA									1					1
2 Carlyle Lake SFWA	19								20					39
3 Chauncey Marsh SNA									2					2
4 Crawford County SFWA									15					15
5 Dog Island SWA									2					2
6 Hamilton County SFWA									28					28
7 Horseshoe Lake SFWA	2						21		29					52
8 Kinkaid Lake SFWA									7					7
9 Newton Lake SFWA													5	5
10 Pyramid SRA			14	10					37					61
11 Ramsey Lake SRA									27					27
12 Sam Dale Lake SFWA									29					29
13 Sam Parr SFWA	5						2	1	78					86
14 Sielbeck Forest SNA									1					1
15 Skinner Farm SHA			1											1
16 Stephen A. Forbes SRA			2					2	28					32
17 Ten Mile Creek SFWA			3	1	6			15	62				1	88
18 Trail of Tears SF									4					4

Table 6. Illinois public hunting sites with no site data collection, 2010-2011 season

Area	Total Acres	Total Acres Hunted	Hunter Trips	Dove	Squirrel	Rabbit	Pheasant	Quail	Ducks	Geese	Wild Turkey	Deer/ Gun	Deer/ Bow	Total Other Species	Total Units Harvested
Region 1															
1 Mississippi Riv-Pool #16 SFWA a/	5260	5260		*	*	*			*	*				*	0
2 Mississippi-Riv Pool #17 SFWA a/	2883	2883		*	*	*	*	*	*	*	3	26	10	*	39
3 Mississippi Riv-Pool #18 SFWA a/	5173	5173		*	*	*	*	*	*	*	2	5	8	*	15
4 Sinnissippi Lake SWA	2000	1200							*	*					0
SUB TOTAL:	15316	14516	0	0	0	0	0	0	0	0	5	31	18	0	54
Region 4															0
5 Fuller Lake SFWA (MRA) b/	1800	1800	13	*	*	*		*	3	*	*	*	*	*	3
6 Helmbold Slough SFWA (MRA)	716	716			*				*	*				*	0
7 Illinois River SFWA (MRA)	150	150							*	*					0
8 Mississippi Riv-Pool #21 SFWA a/	8536	8467		*	*	*		*	*	*				*	0
9 Mississippi Riv-Pool #22 SFWA a/	6861	6200		*	*	*		*	*	*				*	0
10 Mississippi Riv-Pool #24 SFWA a/	10454	10211		*	*	*		*	*	*				*	0
11 Mississippi Riv-Pool #25 SFWA (MRA)	2079	2079			*				*	*	*			*	0
12 Oakford SHA a/	143	143		*	*	*	*	*	*	*	*			*	0
13 Piasa Island SFWA (MRA)	80	80		*	*	*		*	*	*	*	*	*	*	0
14 Red's Landing SFWA (MRA) b/	800	785	5	*	*	*		*	18	*	*	*	*	*	18
15 Rip Rap Landing SFWA (MRA) b/	1232	1225	23	*	*	*		*	32	*	*	*	*	*	32
16 Sangamon River SFWA a/	138	138		*	*	*	*	*	*	*				*	0
(Other MRA data from ILCHECK)											5	59	43	121	228
SUB TOTAL:	32989	31994	41	0	0	0	0	0	53	0	5	59	43	121	281
Region 5															
17 Devil's Island SFWA a/	2741	2741		*	*	*		*	*	*				*	0
18 Wildcat Hollow SHA a/	680	675		*	*	*	*	*			*	16	7	*	23
19 Wise Ridge SNA	555	550		*	*	*	*	*			*	*	*	*	
SUB TOTAL:	3421	3416	0	0	0	0	0	0	0	0	0	16	7	0	23
GRAND TOTAL:	51726	49926	41	0	0	0	0	0	53	0	10	106	68	121	358

* Indicates species hunted at these sites

(MRA) - Part of Mississippi River Fish & Wildlife Management Area

a/ Sites with wild turkey and white-tailed deer data provided from the ILCHECK system

b/ MRA sites - youth duck hunting data

Table 7. Hunting effort and wildlife harvest on public areas regional summary, 2011-2012 season

Regions	Total Acres	Total Acres Hunted	Hunter Trips	Dove	Squirrel	Rabbit	Pheasant	Quail	Ducks	Geese	Wild Turkey	Deer/ Gun	Deer/ Bow	Total Other Species	Total Units Harvested
Region 1 a/	90217	67806	64592	5870	2004	280	1807	29	20080	849	91	503	683	1258	33454
Region 2 a/	35313	23600	34745	2735	345	18	14221	5	4212	453	6	76	203	266	22540
Region 3 a/	41269	30034	40011	2685	2991	775	3625	52	2386	482	55	202	735	1016	15004
Region 4 a/	113212	93178	76049	11348	2710	252	9729	279	38257	611	263	486	957	2446	67338
Region 5 a/	135816	101849	60444	7581	2350	729	6603	775	27819	1154	218	604	781	470	49084
Sub Totals:	415827	316467	275841	30219	10400	2054	35985	1140	92754	3549	633	1871	3359	5456	187420
Public lands w/no on-site data collection	51726	49926	41						53		10	106	68	121	358
ILCHECK system data only b/															
GRAND TOTALS	467553	366393	275882	30219	10400	2054	35985	1140	92807	3549	643	1977	3427	5577	187778

a/ Controlled and wild hunting figures combined for ring-necked pheasant

b/ Harvest data collected through the Illinois IDNR **ILCHECK** telephone and on-line check-in system

Table 8. Statewide percent change - 2011-12 vs. 2010-11 seasons hunting effort and wildlife harvest

ACRES / TRIPS / SPECIES	2010-2011	2011-2012	PERCENT OF CHANGE (+) or (-)
Total Acres a/	467553	467553	(+) 0%
Total Acres Hunted	366393	366393	(+) 0%
Hunter Trips	249313	275882	(+) 11%
Mourning Dove	27454	30219	(+) 10%
Squirrels	9900	10400	(+) 5%
Cottontail	2816	2054	(-) 27%
Ring-Necked Pheasant	44284	35985	(-) 19%
Bobwhite Quail	1587	1140	(-) 28%
Ducks	69603	92807	(+) 33%
Geese	4931	3549	(-) 28%
Wild Turkey b/	788	643	(-) 18%
Deer (Gun) b/	2164	1977	(-) 9%
Deer (Bow) b/	3918	3427	(-) 13%
Raccoon	2370	2885	(+) 22%
Other Species c/	3099	2692	(-) 13%
TOTAL: d/	172914	187778	(+) 9%

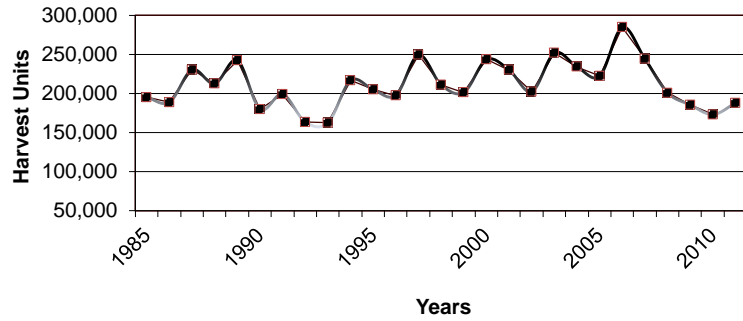
a/ Compiled from the most recent survey of IDNR managed public hunting properties.

b/ Includes figures from the ILCHECK deer and turkey harvest system and from sites that previously had no data reports.

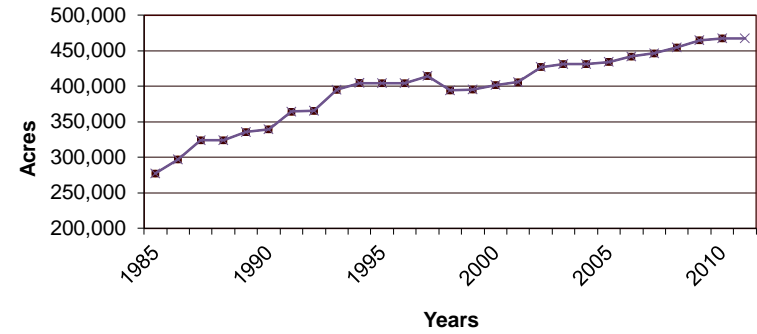
c/ Other species include beaver, coyote, crow, fox, mink, muskrat, opossum, skunk, snipe, woodchuck, woodcock, and coot.

d/ Total units of wildlife harvested.

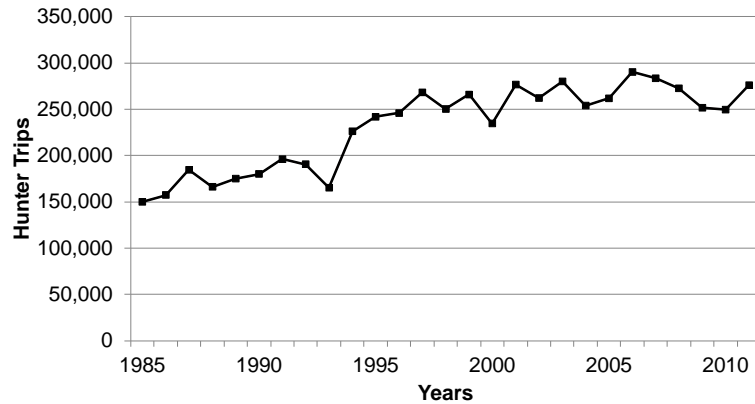
Total Wildlife Harvested on Illinois Public Lands 1985 - 2011



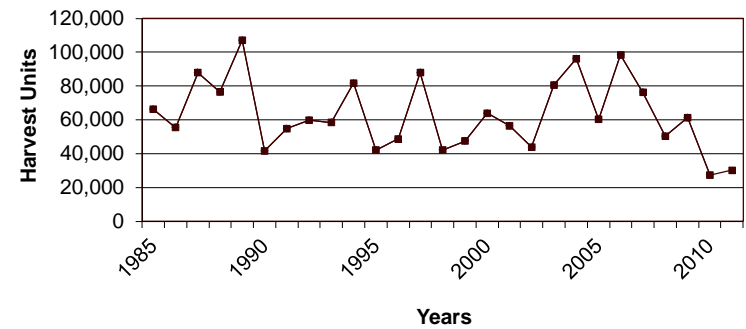
IDNR Public Hunting Areas Total Acreage, 1985 - 2011



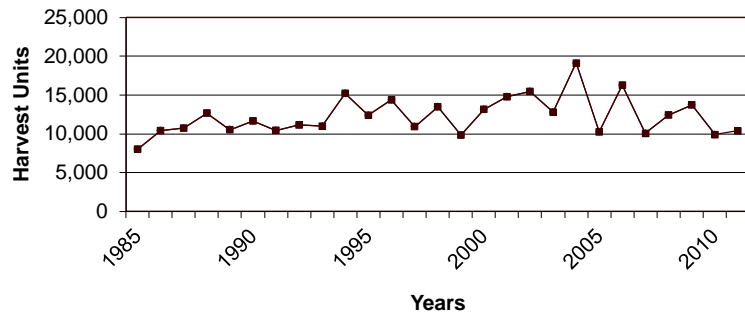
IDNR Public Hunting Areas- Hunter Trips 1985-2011



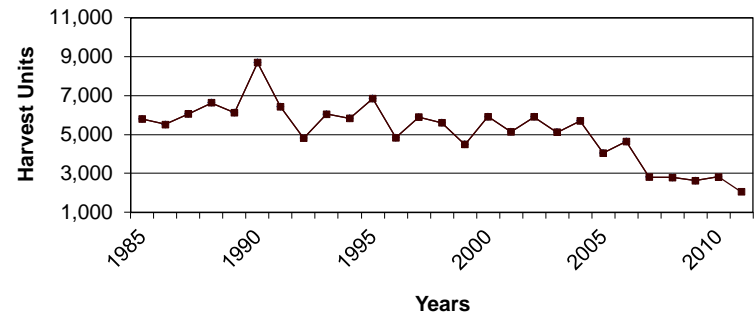
Mourning Dove Harvest 1985 - 2011



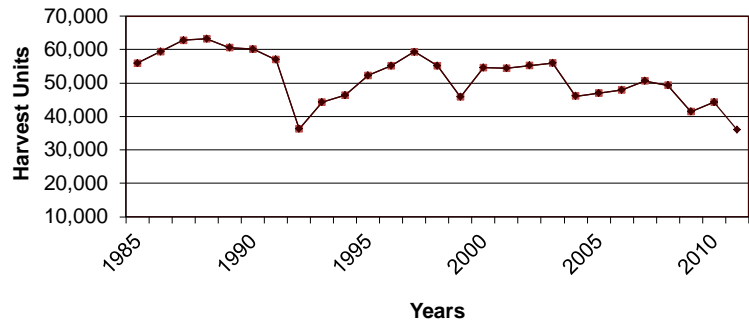
**Squirrel Harvest
1985 - 2011**



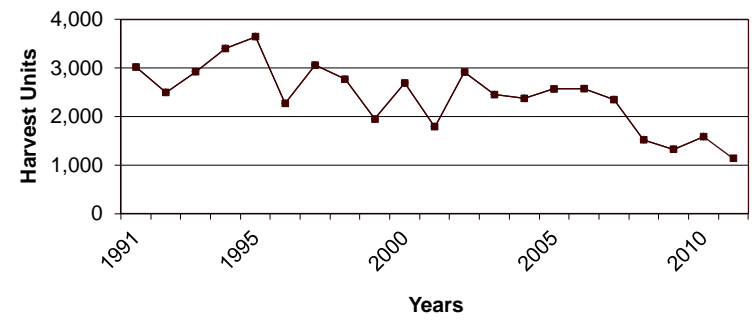
**Cottontail Rabbit Harvest
1985 - 2011**



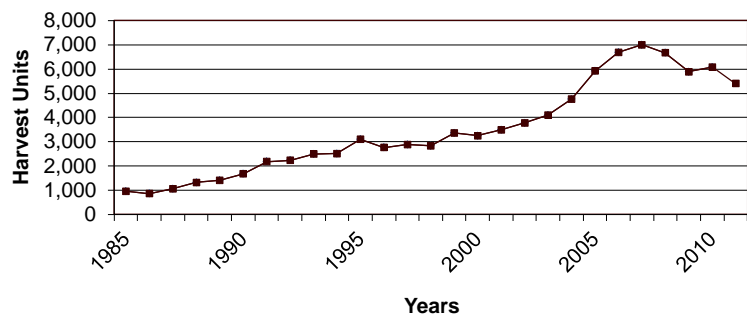
**Ring-necked Pheasant Harvest
1985 - 2011**



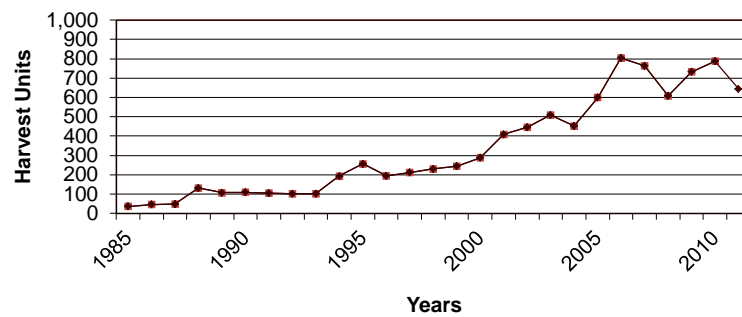
**Bobwhite Quail Harvest
1991 - 2011**



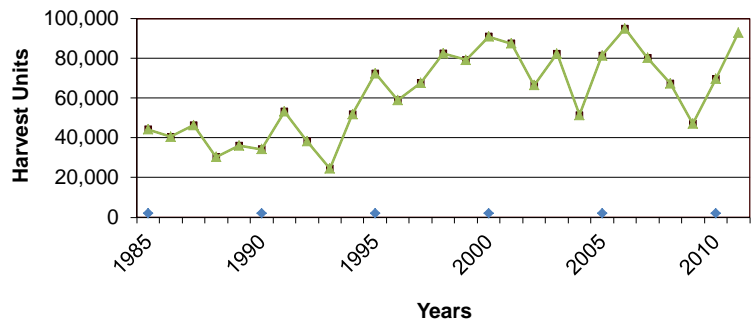
**White-tailed Deer Harvest
1985 - 2011**



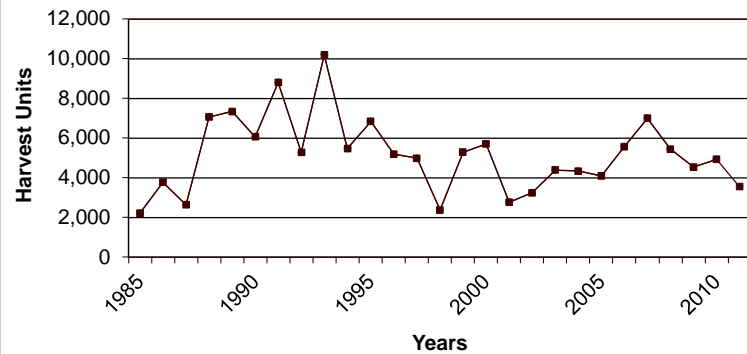
**Eastern Wild Turkey Harvest
1985 - 2011**



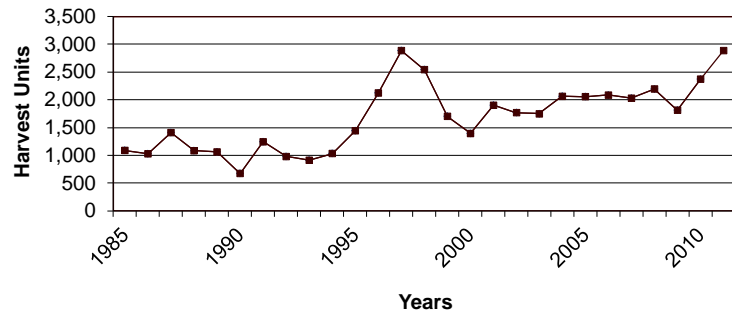
**Duck Harvest
1985 - 2011**



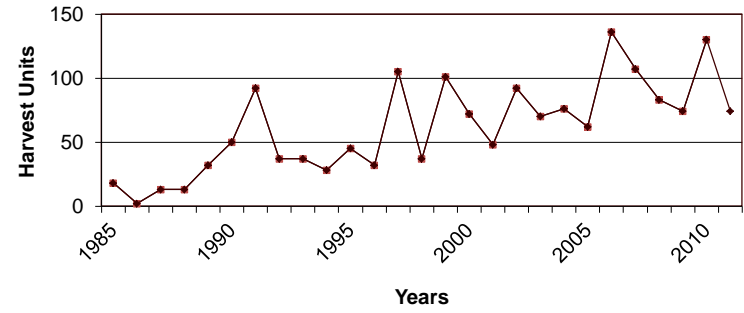
**Goose Harvest
1985 - 2011**



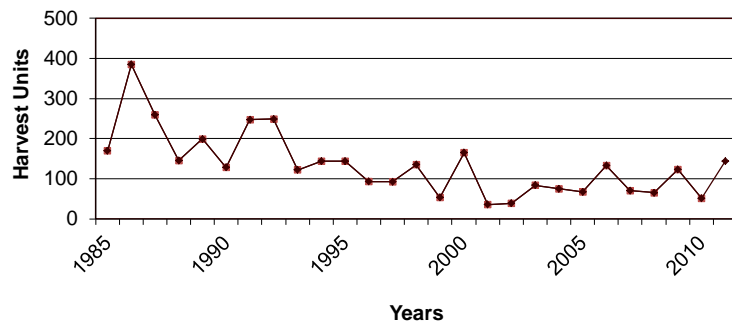
**Raccoon Harvest
1985 - 2011**



**Coyote Harvest
1985 - 2011**



**Woodcock Harvest
1985 - 2011**



**Crow Harvest
1985 - 2011**

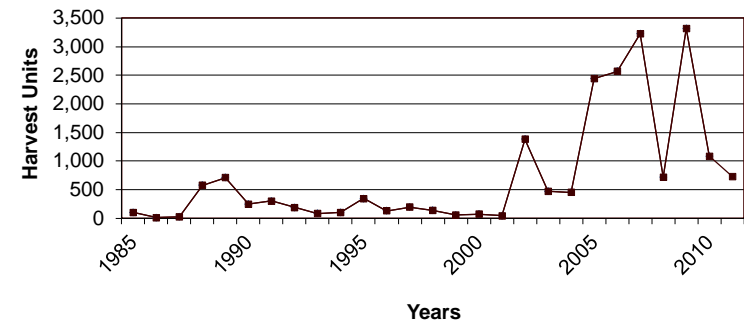


Table 9. Mourning dove hunting effort and harvest on Illinois public hunting areas, 2011-2012 season

REGION 1 SITES	MAN/DAYS	DOVE HARVESTED	REGION 3 SITES	MAN/DAYS	DOVE HARVESTED	REGION 5 SITES	MAN/DAYS	DOVE HARVESTED
1 Banner Marsh SFWA	70	115	1 Clinton Lake SRA	176	618	1 Ft. Massac SP	1	15
2 Big Bend SFWA	190	289	2 Fox Ridge SP	19	66	2 Kinkaid Lake SFWA	88	181
3 Big River SF	104	107	3 Harry 'Babe' Woodyard SNA	27	58	3 Mt. Vernon GPC	72	359
4 Double "T" SFWA	196	573	4 Hidden Springs SF	11	6	4 Newton Lake SFWA	4	4
5 Green River SWA	303	718	5 Iroquois County SFWA	155	881	5 Pyramid SRA	727	3929
6 Hennepin Canal ST	75	103	6 Middle Fork SFWA	22	12	6 Ramsey Lake SRA	67	22
7 Johnson-Sauk Trail SRA	232	901	7 Moraine View SRA	133	142	7 Rend Lake SFWA	19	201
8 Jubilee College SP	46	17	8 Shelbyville SFWA	310	902	8 Sam Dale Lake SFWA	43	62
9 Lake Le-Aqua-Na SFWA	56	380				9 Sam Parr SFWA	252	1266
10 Mackinaw River SFWA	179	61				10 Skinner Farm SFWA	75	68
11 Marseilles SFWA	42	43				11 Stephen A. Forbes SRA	69	101
12 Marshall SFWA	15	0				12 Ten Mile Creek SFWA	244	1367
13 Matthiessen SP	495	1259				13 Union County FWA	4	6
14 Mautino SFWA	51	12	REGION 3 - TOTAL	853	2685			
15 Morrison-Rockwood SP	53	216	REGION 4 SITES	MAN/DAYS	DOVE HARVESTED			
16 Sand Prairie SHA	98	369	1 Coffeen Lake SFWA	66	254			
17 Shabbona Lake SP	134	49	2 Edward R. Madigan SFWA	309	2446			
18 Snakeden Hollow SFWA	176	658	3 Eldon Hazlet SRA	15	1			
19 Victoria SHA	a/		4 Horseshoe Lake SP	563	3163			
			5 Horseshoe Lake SP (Island units)	5	19			
			6 Jim Edgar Panther Creek SFWA	841	3106			
			7 Kaskaskia River SFWA	108	145			
REGION 1 - TOTAL	2515	5870	8 Peabody River King SFWA	144	92			
REGION 2 SITES	MAN/DAYS	DOVE HARVESTED	9 Randolph County SRA	44	73	REGION 5 - TOTAL	1665	7581
1 Chain O' Lakes SP	78	26	10 Ray Norbut SFWA	55	109			
2 Des Plaines SFWA	492	897	11 Sand Ridge SF	12	12	REGIONS	MAN/DAYS	DOVE HARVESTED
3 Kankakee River SP	984	833	12 Sangchris Lake SRA	448	1849	1	2515	5870
4 Silver Springs SFWA	427	979	13 Siloam Spgs. SP-Buckhorn Unit	6	5	2	1981	2735
			14 Turkey Bluffs SFWA	23	5	3	853	2685
			15 Washington County CA	78	21	4	2777	11348
			16 Weinberg-King SP	60	48	5	1665	7581
REGION 2 - TOTAL	1981	2735	REGION 4 - TOTAL	2777	11348	GRAND TOTAL	9791	30219

a/ Dove hunting effort and harvest figures included in Snakeden Hollow SFWA totals

**Table 10. Hunting effort and wildlife harvest on controlled hunting areas on Illinois Public land 2011-2012 season
IDNR Controlled Permit Pheasant Hunting Areas**

SITES	HUNTER TRIPS	PHEASANTS RELEASED	PHEASANTS HARVESTED	PERCENT HARVESTED	HUNTER SUCCESS RATIO
1 Clinton Lake SRA a/	24	88	16	0.18	0.67
2 Des Plaines SFWA	7205	14418	7401	0.51	1.03
3 Eldon Hazlet SRA	3152	6576	4328	0.66	1.37
4 Green River SWA	562	1034	537	0.52	0.96
5 Iroquois County SFWA	2808	6324	3103	0.49	1.11
6 Jim Edgar Panther Creek SFWA	2786	5900	3875	0.66	1.39
7 Johnson-Sauk Trail SRA	1261	2514	1069	0.43	0.85
8 Kankakee River SP	2040	4378	1511	0.35	0.74
9 Mackinaw River SFWA a/	6	48	2	0.04	0.33
10 Moraine View SRA	1429	3044	1530	0.50	1.07
11 Sand Ridge SF	901	1896	643	0.34	0.71
12 Sangchris Lake SRA a/	8	64	3	0.05	0.38
13 Wayne Fitzgerrell SRA	3701	7812	5605	0.72	1.51
14 World Shooting & Recreational Center a/	24	97	44	0.45	1.83
TOTAL	25907	54193	29667	0.55	1.15

a/ Illinois Youth Pheasant Hunt Only

Public/Private Partnership Pheasant Hunting Areas

SITES	HUNTER TRIPS	PHEASANTS RELEASED	PHEASANTS HARVESTED	PERCENT HARVESTED	HUNTER SUCCESS RATIO
1 Chain O' Lakes SP	2903	6213	3555	0.57	1.22
2 Horseshoe Lake-Madison SP	563	1326	728	0.55	1.29
3 Ramsey Lake SRA	466	1109	713	0.64	1.53
4 Silver Springs SFWA	3281	6988	4981	0.71	1.52
TOTAL	7213	15636	9977	0.64	1.38

Table 11. The statewide public lands wildlife habitat development project - (Federal Aid Project W-76-D) 2011-2012 season

Area	Total Acres	Total Acres Hunted	Hunter Trips	Dove	Squirrel	Rabbit	Pheasant	Quail	Ducks	Geese	Wild Turkey	Deer/ Gun	Deer/ Bow	Total Other Species	Total Units Harvested
1 Anderson Lake SFWA	2248	2000	2428		11	3			2741	7			3	2	2767
2 Apple Riv. Canyon SP- S&T units	1484	960	696		40	4					5	8	7	3	67
3 Argyle Lake SP	1800	950	564		50	1					5	3	18		77
4 Big Bend SFWA	2376	2338	1063	289	21	33	10	18			10		25	10	416
5 Big River SF	2997	2970	1087	107	131	55					10	18	15		336
6 Birkbeck SHA	80	80	44												25
7 Bradford SHA	103.5	100	26					4							4
8 Cache River SNA	14489	11946	3432		235	61			650	3	10	42	7	1	1009
9 Campbell Pond SHA	520	520	125		92						1	5	6		104
10 Carlyle Lake SFWA	9914	9868	7628						8065	207	7	41	31	39	8390
11 Castle Rock SP	2000	1620	1562		122						2	36	26		186
12 Cedar-Draper Bluffs SNA	1300	1275	279		14						6	21	5		46
13 Clinton Lake SRA	9937	6082	7407	618	671	145	58	2	860	222	11	24	261	121	2993
14 Coffeen Lake SFWA	3180	3055	1875	254	28	3	18	8	76	41	15	12	34	351	840
15 Crawford County SFWA	1129	1100	1179		223	29		3			3	40	22	15	335
16 Cypress Pond SNA	1047	1047	418		4	1					1	18	8		32
17 Deer Pond SNA	230	190	119								1	4	6		11
18 Dixon Springs SP	1087	265	115		4						2	10	11		27
19 Dog Island SWA	221	220	317		20	2			8			3	7	2	42
20 Ferne Clyffe SP	1125	450	294		41	3					6	11	6		67
21 Finrock SHA b/	377	377	53				43								43
22 Ft. deChartres SM	1100	800	53									8	4		12
23 Ft. Kaskaskia SM	275	140	48										2		2
24 Freeman Mine SHA	179	24	100			5	16		28	3					52
25 Giant City SP	4055	2255	1362		116	5					15	47	22		205
26 Green River SWA a/	2565	2515	2736	718	64	69	652	4			15	23	21		1566
Sub Total	65818.5	53147	35010	1986	1887	419	826	35	12428	483	125	374	547	544	19654

Continues on Page -28-

Table 11. The statewide public lands wildlife habitat development project - (Federal Aid Project W-76-D) 2011-2012 season

Area	Total Acres	Total Acres Hunted	Hunter Trips	Dove	Squirrel	Rabbit	Pheasant	Quail	Ducks	Geese	Wild Turkey	Deer/ Gun	Deer/ Bow	Total Other Species	Total Units Harvested
27 Hallsville SHA	80	80	28				20	4							24
28 Hanover Bluff SNA	247	231	274		155							1	3		159
29 Hennepin Canal ST	5348	4854	244	103									7	608	718
30 Herschel Workman SHA	135	135	53				5								5
31 Hidden Springs SF	1129	963	1377	6	301	20					3	7	29	78	444
32 Hindsboro SHA	90	85	60			3	8	3						1	15
33 Ilo Dillin SNA	79	75	52			2	5	1						1	9
34 Johnson-Sauk Trail SFWA	1361	862	2202	901	60	15	1075				1		11	61	2124
35 Kaskaskia River SFWA	16000	14000	3694	145	30	22			1667	116	6	107	77	417	2587
36 Kickapoo SRA	3981	2381	2707		214	26		12			7	43	58		360
37 Kidd Lake Marsh SNA	465	465	57						33	1			3		37
38 Kinkaid Lake SFWA	3350	3000	658	181	73			5	22		10	59	18	7	375
39 Lowden-Miller SF	2225	2225	2352									39	35		74
40 Mackinaw River SFWA	1415	1400	2131	61	120	18	17	2				17	25		260
41 Marseilles SFWA	2515	2239	1897	43	209	25	6				10	84	21		398
42 Marshall SFWA	6539	4876	3626		113				1843	216	3	12	15	47	2249
43 Mautino SFWA	911	891	677	12									11	14	37
44 Meeker HA	72	71	25								1		2		3
45 Moraine View SRA	1687	1191	2780	142	233	176	59				7		59	90	766
46 Newton Lake SFWA	6500	5600	1899	4	44	40	3	46	178	25	12	45	49	5	451
47 Peabody River King SFWA	2000	1000	204	92	10	4		35			6		6	6	159
48 Perdueville SHA	120	120	30				8								8
49 Randolph County SRA	1031	750	875	73	68	11					9		19	23	203
50 Rauchfuss Hill	150	150	42												0
51 Ray Norbut SFWA	1380	1290	818	109	55				7		9	19	29	122	350
52 Red Hills SP	967	736	515		8	3					4		12		27
53 Redwing Slough/D.L.SNA	711	200	175						89	40					129
54 Rend Lake SFWA	12690	7690	7800	201					8698	238	10	23	44		9214
Sub Total	73178	57560	37252	2073	1693	365	1206	108	12537	636	98	456	535	1478	21185

Table 11. The statewide public lands wildlife habitat development project - (Federal Aid Project W-76-D) 2011-2012 season

Area	Total Acres	Total Acres Hunted	Hunter Trips	Dove	Squirrel	Rabbit	Pheasant	Quail	Ducks	Geese	Wild Turkey	Deer/ Gun	Deer/ Bow	Total Other Species	Total Units Harvested
55 Saline County SFWA	1450	1000	817		142	3				2	5	33	7		192
56 Sam Dale Lake SFWA	1301	800	998	62	79	9		16			7		37	29	239
57 Sam Parr SFWA	1172	840	821	1266	58	10		14			2		18	86	1454
58 Sanganois SFWA	9602	6860	5195						7865	9		9	14		7897
59 Sangchris Lake SRA	5280	2380	4826	1849	155		26	22	1285	126	2	4	120	62	3651
60 Saybrook SHA	646	646	65				65								65
61 Shelbyville SFWA	6450	6350	9284	902	628	288	48	18	1526	260	5	28	69	268	4040
62 Sibley SHA	635	630	79				104								104
63 Siloam Springs SP	3323	2380	1806		132						8	30	63	33	266
64 Silver Springs SFWA	1314	900	4958	979	76		5025						15		6095
65 Skinner Farm SHA	221	70	205	68	1	15						2	1	1	88
66 Snakeden Hollow SFWA	2500	2500	392	658					24	27			6		715
67 Spoon River SF	1680	1650	1494		178						10	20	44		252
68 Stephen A. Forbes SRA	3103	2580	1598	101	101	2		5	76	2	13		42	32	374
69 Tapley Woods SNA	259	259	313		186						1	3	2		192
70 Ten Mile Creek SFWA	5824	4995	4176	1367	170	351		206	625	73	32	83	52	88	3047
71 Trail of Tears SF	5019	4784	650		192						14	19	1	4	230
72 Turkey Bluffs SFWA	2265	2250	1068	5	99	9					15	29	15	10	182
73 Victoria SHA	241	241	30				17								17
74 Wards Grove SNA	335	332	198									7	7		14
75 Weinberg-King SP	772	751	505	48	129	24						14	2		217
76 Wildcat Hollow SHA	680	675										16	7		23
77 Willow Creek SHA	87	87	30			2	4								6
78 Witkowsky SWA	931	931	1063		56	15					6	17	24		118
79 Woodford SFWA	5426	1840	3080						4226	64				4	4294
Sub Total	60516	46731	43651	7305	2382	728	5289	281	15627	563	120	314	546	617	33772
GRAND TOTAL	199513	157438	115913	11364	5962	1512	7321	424	40592	1682	343	1144	1628	2639	74611

a/Controlled permit Pheasant Hunting Area

b/ No Hunter Data was Collected.

**Table 12. The statewide public lands wildlife habitat development project
(Federal Aid Project W-76-D) Percent change - 2011-12 vs. 2010-11 seasons**

Acres /Trips/Species	2010-2011	2011-2012	Percent of Change (+) or (-)
Total Acres a/	199513	199513	(+) 0%
Total Acres Hunted a/	157438	157438	(+) 0%
Hunter Trips	106075	115715	(+) 8%
Mourning Dove	11265	11364	(+) 1%
Squirrels	5772	5962	(+) 3%
Cottontail	1952	1512	(-) 29%
Ring-Necked Pheasant (<i>wild bird harvest only</i>)	510	526	(+) 3%
Ring-Necked Pheasant (<i>released bird harvest only</i>)	9091	7321	(-) 24%
Bobwhite Quail	508	424	(-) 20%
Ducks	28362	40592	(+) 30%
Geese	2117	1682	(-) 26%
Wild Turkey	498	343	(-) 45%
Deer (Gun)	1164	1144	(-) 2%
Deer (Bow)	1862	1628	(-) 15%
Other Species b/	2646	2639	(-) 0%
TOTAL:	65747	75137	(+) 12%

a/ Compiled from the most recent survey of IDNR managed public hunting properties

b/ Other species include beaver, coyote, crow, fox, mink, muskrat, opossum, raccoon, skunk, snipe, woodchuck, woodcock, and coot.

Table 13. Waterfowl harvest, hunter trips and success rates during the 2011-12 Illinois waterfowl season at 53 public sites.

Public Land Site	Harvest During 60 Day Duck Season						Post Duck Season Goose Harvest			Waterfowl Season Totals (Includes all seasons)				
	Hunter Trips	Mallards	Total Ducks	Success Rate	% Change From 2010/11 Duck Harvest	Canada Geese	Hunter Trips	Canada Geese	Canada Goose Success Rate	1./ Hunter Trips	2./ Duck Harvest	3./ Canada Geese	Snow Blue	White Front
1 Anderson Lake SFWA	2318	1621	2716	1.17	+2.17	6				2374	2741	6	1	
2 Banner Marsh SFWA	1638	303	1319	0.81	-.46	69	349	95	0.27	1987	1319	164		1
3 Batchtown SFWA	3867	2585	6807	1.76	+1.36	22				3924	7021	22	10	1
4 Cache River SNA	1156		631	0.55	+.26	3								
5 Calhoun Point SFWA	2920	1199	2692	0.92	-.01	17				2959	2718	22		
6 Cape Bend SFWA	102		32	0.31	-.71									
7 Carlyle Lake SFWA	5970	3875	6708	1.12	+1.56	31	78	6	0.08	6940	8065	48	22	137
8 Chain O' Lakes SP	1389	240	1138	0.82	-.09	62				1389	1138	62		
9 Clear Lake SHA	272		470	1.73	+1.04	4				272	470	4		
10 Clinton Lake SRA	6590	423	860	0.13	-.13	115	86	67	0.78	6794	860	222		
11 Coffeen Lake SFWA	68	43	76	1.12	+43	2	48	34	0.71	117	76	36		5
12 Des Plaines SFWA	242	73	150	0.62	-.51	20	25	15	0.60	267	150	35		
13 Dog Island WMA	33	2	8	0.24	-.27					33	8			
14 Donnelley SFWA a./	548	51	223	0.41	-.03	3				548	223	3		
15 Double "T" SFWA	156	106	160	1.03	+1.24	3	96	18	0.19	277	160	21	39	13
16 Freeman Mine	73	14	28	0.38	+1.55	3	6	0	0.00	79	28	3		
17 Glades-12 Mile Island S FWA	3132	1561	3411	1.09	+1.91	16				3191	3463	16	4	6
18 Godar-Diamond-Hurricane Island SFWA	3645	2642	4902	1.34	+1.93	43				3724	4952	44	2	9
19 Heidecke Lake SFWA	717	346	398	0.56	-.12	24				717	398	24		
20 Horseshoe Lake SFWA (Alexander Co.)	2016		2221	1.10	+1.47	13							1	
21 Horseshoe Lake SP & Island units (Madison Co.)	3691	716	4084	1.11	-.05	37	199	18	0.09	4266	4335	112	20	12
22 Kankakee River SP	322	118	193	0.60	+1.74	16	21	9	0.43	343	193	25		
23 Kaskaskia River SFWA	2073	706	1613	0.78	+1.45	79				2073	1613	79		
24 Kinkaid Lake SFWA	64	8	14	0.22	-.89					64	22			
25 Lake DePue SFWA	809	261	732	0.90	+1.06	31	67	51	0.76	816	223	3		
26 Marshall SFWA	1830	891	1999	1.09	+1.44	52	271	154	0.57	2342	2141	215	1	
27 Mazonia-Braidwood SFWA	2768	1338	1938	0.70	-.24	22	365	184	0.50	3164	1970	208		1
28 Mermet Lake SFWA	1542	574	1475	0.96	-.06	28	16	5	0.31	1899	1791	33		
29 Momence Wetlands LWR	51	17	42	0.82	+1.33	2				51	42	2		
30 MRA youth hunt sites - Fullar Lake, Red's Landing, Rip Rap										41	53			
31 Newton Lake SFWA	273	108	178	0.65	-.44	23				273	178	23	2	
Sub Total	50275	19821	47218	0.94	+1.39	746	1627	656	0.40	50924	46351	1432	102	185

Table 13. Waterfowl harvest, hunter trips and success rates during the 2011-12 Illinois waterfowl season at 53 public areas.

Public Land Site	Harvest During 60 Day Duck Season						Post Duck Season Goose Harvest			Waterfowl Season Totals (Includes all seasons)				
	Hunter Trips	Mallards	Total Ducks	Success Rate	% Change From 2010/11 Duck Harvest	Canada Geese	Hunter Trips	Canada Geese	Canada Goose Success Rate	1./ Hunter Trips	2./ Duck Harvest	3./ Canada Geese	Snow Blue	White Front
32 Pekin Lake SFWA	30	11	21	0.70	+3.20	20				30	21	20		
33 Powerton Lake SFWA	450	107	393	0.87	-.55	22				450	393	22	6	1
34 Pyramid SRA (includes all units)	6641	1063	3077	0.46	-.16	90	71	0	0.00	6754	3077	90	314	151
35 Ray Norbut SFWA	3		7	2.33	+1.00					3	7			
36 Red Wing Slough/Deer Lake SNA	175	54	89	0.51	-.50	40				175	89	40		
37 Rend Lake SFWA	7366	4696	8264	1.12	+1.49	28	195	65	0.33	7781	8698	93	23	122
38 Rice Lake SFWA	4394	2848	6415	1.46	+1.76	38				4760	6551	70		
39 Saline County SFWA	4		2	0.50	+1.00					4		2		
40 Sanganois SFWA	4875	4137	7865	1.61	+1.68	9				4875	7865	9		
41 Sangchris Lake SRA	1487	603	1285	0.86	-.21	16	339	101	0.30	1826	1285	117	9	
42 Shabbona Lake SP	97		10	0.10	+2.33	4				97	10	4		
43 Shelbyville SFWA	1250	509	1286	1.03	-.32	112	125	46	0.37	1751	1526	260		
44 Snakeden Hollow SFWA	134		24	0.18	+1.00	13	82	14	0.17	216	24	27		
45 Spring Lake SFWA	1606	547	1649	1.03	+1.30	22	130	45	0.35	1794	1726	74		
46 Starved Rock SP	289	55	88	0.30	-.24	10	27	6	0.22	325	90	17		
47 Stephen Forbes SRA	99	42	76	0.77	+2.17		2	2	1.00	101	76	2		
48 Stump Lake SFWA	4170	1944	4198	1.01	+1.83	13				4236	4281	14	3	14
49 Ten Mile Creek SFWA	190	161	265	1.39	-.21	8	4	10	2.50	426	625	24	46	3
50 Union County SFWA	1921		2371	1.23	-.34					15			1	
51 Weinberg King SP - Spunky Bottoms unit	20		38	1.90	-.65					20	38			
52 William W. Powers SRA	504	91	232	0.46	+1.76					504	232	55		
53 Woodford SFWA	3073	2578	4226	1.38	+1.59	17	70	29	0.41	3073	4141	60	4	
Sub-Total	38778	19446	41881	1.08	+1.28	462	1045	318	0.30	39216	40755	1000	406	291
TOTALS (Page 31 & 32)	89053	39267	89099	1.00	+1.34	1208	2672	974	0.36	90140	87106	2432	508	476

1./ total waterfowl season hunter days

2./ includes harvest from early teal, youth duck hunt and 60 day duck hunting seasons

3./ includes harvest from early Giant Canada goose and regular Canada goose seasons

a./ includes data from designated youth hunting during regular duck season

Table 14. Teal harvest, hunter trips and success rate during the 16 day teal season in 2011.

Public Land Site	Hunter Trips	Teal Harvest	Success Rate
1 Anderson Lake SFWA	8	19	2.38
2 Cache River SNA	70	19	0.27
3 Carlyle Lake SFWA	711	904	1.27
4 Chain O' Lakes SP	19	13	0.68
5 Clinton Lake SRA	55	31	0.56
6 Horseshoe Lake SFWA	4	5	1.25
7 Horseshoe Lake SP	347	216	0.62
8 Kaskaskia River SFWA	137	54	0.39
9 Kidd Lake Marsh SNA	45	33	0.73
10 Marshall SFWA	124	116	0.94
11 Pyramid SP	23	45	1.96
12 Rice Lake SFWA	155	100	0.65
13 Snakeden Hollow SFWA	38	20	0.53
14 Ten Mile Creek SFWA	276	191	0.69
15 Woodford SFWA	44	14	0.32
Totals	2056	1780	0.87

Table 15. Ducks, geese and coots harvested, hunter trips and success rate during the 2 day youth hunting season in 2011.

Public Land Site	Total Hunter Trips	Harvest					Duck Success Rate
		Total Ducks	Mallards	Geese	Coots	Total Units	
1 Anderson Lake SFWA	37	25	4		2	27	0.68
2 Banner Marsh SFWA	31	21	2	6		27	0.68
3 Batchtown SFWA	57	214	5		17	231	3.75
4 Calhoun Point SFWA	39	26	3			26	0.67
5 Carlyle Lake SFWA	181	453	105			453	2.50
6 Coffeen Lake SFWA	1	0	0			0	0.00
7 Fuller Lake SFWA	13	3	2			3	0.23
8 Glades-12 Mile Island SFWA	59	52	3		1	53	0.88
9 Godar-Diamond SFWA	79	50	3	1		51	0.63
10 Horseshoe Lake-Madison SP	28	53	7	2	1	56	1.89
11 Lake DePue SFWA	4	12				12	3.00
12 Marshall SFWA	28	26				26	0.93
13 Mazonia-Braidwood SFWA	21	32	8	2		34	1.52
14 Mermet Lake SFWA	137	316	86		7	323	2.31
15 Pyramid SP	6	11					1.83
16 Red's Landing SFWA	5	18	1			18	3.60
17 Rend Lake SFWA	220	434	78			434	1.97
18 Rice Lake SFWA	56	36	1	1		37	0.64
19 Rip-Rap Landing SFWA	23	32				32	1.39
20 Sangchris Lake SRA	25	42	2			42	1.68
21 Spring Lake SFWA	58	77	9	7	3	87	1.33
22 Starved Rock SP	9	2		1		3	0.22
23 Stump Lake SFWA	66	83		1		84	1.26
24 Ten Mile Creek SFWA	5	8	8			8	1.60
25 Woodford SFWA	46	104	37	4	4	108	2.35
Totals	1234	2130	364	25	35	2190	1.73

REFERENCES

Information contained and used in this report came from the following sources:

Illinois Public Hunting Areas Report 1984-85 Season
Illinois Public Hunting Areas Report 1985-86 Season
Illinois Public Hunting Areas Report 1986-87 Season
Illinois Public Hunting Areas Report 1987-88 Season
Illinois Public Hunting Areas Report 1988-89 Season
Illinois Public Hunting Areas Report 1989-90 Season
Illinois Public Hunting Areas Report 1990-91 Season
Illinois Public Hunting Areas Report 1991-92 Season
Illinois Public Hunting Areas Report 1992-93 Season
Illinois Public Hunting Areas Report 1993-94 Season
Illinois Public Hunting Areas Report 1994-95 Season
Illinois Public Hunting Areas Report 1995-96 Season
Illinois Public Hunting Areas Report 1996-97 Season
Illinois Public Hunting Areas Report 1997-98 Season
Illinois Public Hunting Areas Report 1998-99 Season
Illinois Public Hunting Areas Report 1999-00 Season
Illinois Public Hunting Areas Report 2000-01 Season
Illinois Public Hunting Areas Report 2001-02 Season
Illinois Public Hunting Areas Report 2002-03 Season
Illinois Public Hunting Areas Report 2003-04 Season
Illinois Public Hunting Areas Report 2004-05 Season
Illinois Public Hunting Areas Report 2005-06 Season
Illinois Public Hunting Areas Report 2006-07 Season
Illinois Public Hunting Areas Report 2007-08 Season
Illinois Public Hunting Areas Report 2008-09 Season
Illinois Public Hunting Areas Report 2009-10 Season
Illinois Public Hunting Areas Report 2010-11 Season
Illinois Public Hunting Areas Report 2011-12 Season