



2016 Illinois Directory of Professional Consulting Foresters



Updated July 2016

Timber Sale Administration

Marketing, Bids, Contracts, Basis, Taxes

Timber Appraisals

Value, Trespass, Theft, Expert Witness

Forest Management & Planning

Reconnaissance, Inventory/Cruise, Plans

Intermediate Stand Management

TSI, Crop Tree Release, Pruning, Thinning

Herbicide Recommendations

State & Federal Forestry Programs

IFDA, CRP, CREP, EQIP, etc.

Prescribed Fire & Burn Plans

Forest Health — Insects & Disease

Evaluation, Treatment, and Control

Invasive Species Control & Removal

Forest Technology

GPS and GIS Mapping

Wildlife Habitat & Management

Urban and Community Forestry

Timber Sale Administration



Tree Planting

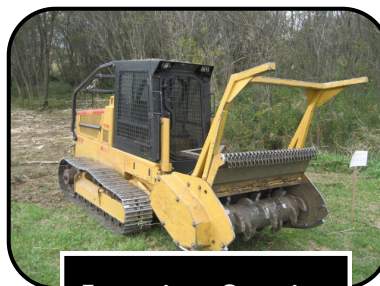
Forest Planning & Management



Prescribed Fire



Invasive Species



Forest Inventory



University of Illinois Extension Forestry is proud to present the *2016 Illinois Directory of Professional Consulting Foresters*. This directory is provided as a public service to Illinois forest landowners, homeowners, land trusts, businesses, and municipalities who require the expert advice and technical services of a professional forester.

There are approximately 177,000 woodland owners in Illinois and these family forest owners and individuals control over 3.9 million acres of forest land here in the Prairie State. More importantly, due to continued budgetary cuts and staffing shortfalls within the Illinois Department of Natural Resources' (IDNR) Division of Forest Resources, independent professional consulting foresters operating in Illinois serve an integral and strategic role in the conservation, management, and enrichment of Illinois's 4.96 million acres of forest land. Who better to ask about trees, forests, forestry, and forest wildlife—a professional forester of course!

What is a Professional Consulting Forester?

Independent professional consulting foresters—also known as consultants—are self-employed, college trained natural resource professionals with advanced preparation in forest science and management. Forestry consultants provide fee-based, on-site technical forestry services to forest landowners, homeowners, land trusts, businesses, and local, state, and federal government. It is important to note “independent” professional consulting foresters are not allowed to engage in the buying or brokering of timber or logs for sawmills, export firms, or forest products companies; however, it is important to verify this fact with the consulting forester as they are ethically obligated to divulge this information to their clients (see definitions page 5).

There are no legal definitions or official boards governing the licensing of professional foresters in the state of Illinois. Therefore, it is the sole responsibility of landowners and homeowners to request the credentials and references of an individual claiming to be an *independent* professional consulting forester. Be wary of “timber brokers” who pretend to offer professional forestry or timber management services!

Individuals listed within this professional consulting forestry directory possess, at minimum, either a four-year college degree in forestry; a four-year degree in an allied natural resources discipline with adequate competency in forest management deemed acceptable to author forest manage-

ment plans as verified by the USDA Natural Resources Conservation Service; a graduate degree in forestry or natural resources; or a two-year associates degree in forest technology.

How Can an Independent Professional Consulting Forester be of Assistance to You?

Timber Sale Administration & Marketing: consultants adept in the valuation and marketing of standing timber and adept in the administration of timber sales, bids, and contracts; arguably the most critical aspect of forest management a landowner will ever undertake!

Appraisals: consultants are often hired by landowners, farm managers, banks, government, land trusts, accountants, and attorneys to conduct legal appraisals for standing timber, storm-damaged timber, real estate/land acquisitions, timber trespass disputes, timber theft, and other forestry-related litigation.

Contractual Timber Work: consultants are often hired to implement site-specific intermediate stand management treatments such as timber stand improvement (TSI), crop tree release, woody vine control, pruning, and thinning in natural forests and hardwood/conifer tree plantations.

GPS & GIS Mapping Services: consultants who provide quality mapmaking services utilizing the latest GPS and GIS technology.



This independent professional consultant forester was hired to conduct a thorough forest inventory; prepare a forest management plan; determine the owner's timber cost-basis for tax reporting and accounting purposes; and mark, market, administer, and monitor a timber sale for an Illinois forest landowner.

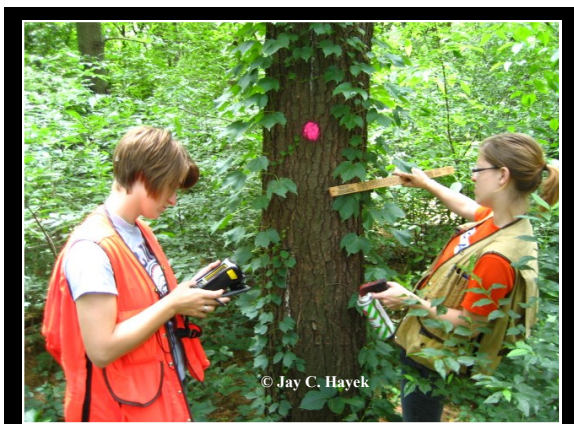
Contractual Tree Planting: consultants with the expertise and equipment to complete small- or large-scale tree planting projects, including field windbreaks; fulfill tree planting practices enrolled through your local USDA Farm Service Agency office or local IDNR district forester office.

Expert Testimony: consultants adept in providing expert testimony and research with regard to forestry-related litigation.

Forest Management Plans & Forest Inventory: consultants are frequently hired to perform on-site woodland reconnaissance, evaluations, and reports; conduct detailed forest inventories (a.k.a., timber cruising); and write forest management plans for landowners as required by voluntary forestry programs with specific program requirements and standards, such as the Illinois Forestry Development Act (IFDA), Environmental Quality Incentives Program (EQIP), Conservation Reserve Program (CRP), and the American Tree Farm™ program.

Forest Valuation & Financial Analysis: consultants adept in advanced forest valuation and financial analyses with regard to forest land and timber investments.

Prescribed Fire & Controlled Burn Plans: consultants with experience and state/federal certifications in both prescribed fire use and in the preparation of controlled burn plans as required by IDNR and IL-EPA.



© Jay C. Hayek

Forest landowners are strongly encouraged to contact a professional forester prior to selling their timber. Independent consulting foresters provide a wide variety of timber sale administration related services, such as detailed forest inventories; appraisals; timber cost-basis; marking saleable trees based on owner’s objectives; and most importantly the marketing and competitive bidding of timber to multiple licensed timber buyers in order to generate greater timber sale revenues, all while retaining more high-value trees for future timber sales!

Did You Know?

- Forestry is “the profession embracing the science, art, and practice of creating, managing, using, and conserving forests and associated resources for human benefit and in a sustainable manner to meet desired goals, needs, and values” (*Dictionary of Forestry*).
- Professional foresters are well versed in the areas of silviculture, forest management, forest ecology, forest measurements, dendrology, entomology, soil conservation, geology, hydrology, GIS, economics, wildlife management, recreation, and wood products.
- Aldo Leopold, arguably one of the greatest conservationists of all time, was a trained professional forester. Most people are surprised to learn that Leopold received his advanced forestry training and degree from the Yale Forest School, now called the Yale School of Forestry and Environmental Studies.

Timber Cost-Basis and Taxation: consultants adept in calculating timber cost-basis for accounting and IRS tax reporting purposes related to the sale of timber or timber casualty losses; knowing your timber cost-basis is a fundamental, yet critical accounting and IRS cost-savings measure for anyone selling timber; please refer to the National Timber Tax website:

www.TimberTax.org

Herbicide Application & Recommendations: consultants who are licensed pesticide applicators with advanced pesticide (herbicide) knowledgeable and expertise; contact individual consultants to determine whether or not they also provide custom herbicide application services related to tree plantings, invasive species, ecological restoration, Christmas trees, or ornamental tree pests/pathogens.

Invasive Species Control & Removal: consultants experienced in the identification and effective treatment and removal of exotic and invasive herbaceous and woody plants.

Biomass Marketing: consultants adept in marketing and capitalizing in emerging woody biomass markets, including USDA’s Biomass Crop Assistance Program (BCAP).

Business Planning: consultants with advanced knowledge and expertise in business and estate planning.

Carbon Sequestration & Carbon Credits: consultants adept in the inventory and assessment of current and future carbon credit markets.

Christmas Tree Management: consultants experienced in the cultivation, management, and care of Christmas trees.

Did You Know?

A professional consulting forester's commission fee for timber sale administration and marketing is **100% tax deductible!**

Ecological Restoration: consultants adept in ecological restoration techniques, such as savanna or wetland restoration; contact consultant for more information regarding this particular service.

Environmental Planning & Assessments: consultants adept in preparing environmental analyses, documents, and reports for the purpose of general planning, research, or local government action.

Habitat Establishment: consultants with the expertise and equipment to establish perennial habitat, such as warm season prairie grasses, and food plots wildlife.

Insect & Disease Evaluations: consultants who perform insect and disease evaluations for forest landowners, homeowners, land trusts, and government entities.

Recreation Planning & Development: consultants with expertise in the advanced planning and development of forest recreation opportunities for forest landowners, hunt clubs, wooded subdivisions, and local government.

Surveying & Boundary Establishment: consultants adept in general boundary establishment; however, legal surveys must be conducted by an Illinois professional land surveyor:

www.iplsa.org

Urban and Community Forestry (Arboriculture): consultants adept or certified in the care and maintenance of urban and community trees and forests; general woody ornamental questions, tree selection, maintenance, watering, fertilization, pruning, hazard tree assessments, etc.; please refer to the Illinois Arborist Association website for a complete list of certified arborists:

www.IllinoisArborist.org

Wildlife Management: consultants who specialize in providing specific solutions to wildlife habitat objectives, issues, and concerns; most professional foresters are avid outdoorsmen and are thus equally proficient in providing wildlife management expertise to forest landowners.

Consulting Foresters' Fee Structure

Consulting foresters offer a wide variety of professional services, and as such, a consultant's fee structure will vary accordingly with services requested, services provided, reputation, and expertise. Most consulting foresters working in Illinois charge a flat rate — \$/hour, \$/acre, \$/job — for professional services such as the preparation of forest management plans; timber appraisals and timber cost-basis; contractual timber work such as crop tree release; contractual tree planting; invasive species removal; and herbicide application. Please note that a consultant's flat rate may or may not include initial site visits, travel, or material costs.

Furthermore, it is always good business practice to receive everything in writing prior to initiating any fee-based consulting service so as to avoid any possible misunderstandings regarding fees and services. Upon agreeing to services and an acceptable fee structure, it is equally important to finalize the agreement via a written and signed contract or work order — make sure to explicitly state all agreed upon services, fees, and completion dates.

In contrast to a flat rate structure for typical forest management assistance, nearly all consulting foresters operating in Illinois and the Midwest charge a commission fee for timber sale administration and marketing. Common timber sale administration and marketing commission fees range from 8-10% — this commission is applied to the gross value of the timber sold on behalf of the landowner. Please refer to [Technical Forestry Bulletin NRES-203](#) for more information about hiring a professional consulting forester and understanding a consultants' timber sale administration, marketing, and commission fee structure.

Did You Know?

Woodland owners who acquire the services of a professional forester earn, on average, 25-250% greater timber sale revenues as compared to selling their timber directly to a timber buyer or logger! This is commonly referred to as the professional forester's "*Timber Marketing Effect*".

Equally important is the fact that professional foresters almost always mark and sell more lower value trees, while marking and selling fewer high-value trees, at least during the landowner's first timber sale.

The End Result: Landowners retain more high-value trees for future timber sales when they employ the services of a professional forester—this expertise provides both future ecological benefits and financial benefits!

Definitions: Forestry Professionals

Certified Arborist - a tree care specialist who has passed at least one certification exam through the International Society of Arboriculture (ISA); a certified arborist may or may not be a professional forester; forestry services are fee-based.

www.IllinoisArborist.org

Certified Forester (CF®) - a professional forester certified by the Society of American Foresters (SAF); minimum of five years of professional forestry experience and an earned college degree through an SAF accredited program.

Certified Tree Farm™ Inspector - a professional forester certified as an inspector by the American Tree Farm System™.

Consulting Forester (independent) - a self-employed, “independent” professional forester—meaning no affiliations with timber buyers, forest products companies, sawmills, log brokers, or log export companies—who represents the interests of private and public forest landowners; provides on-site, technical forestry assistance; forestry services are fee-based.

www.IllinoisConsultingForesters.com

Consulting Forester (non-independent) - a professional forester with monetary or employment ties to timber buyers, forest product companies, sawmills, log brokers, or log export companies.

Extension Forester (state) - a professional forester employed by the state’s Land Grant university; provides general technical forestry outreach and education.

District Forester (state) - a professional forester employed by the Division of Forest Resources, Illinois Dept. of Natural Resources; provides on-site, technical assistance to private forest landowners; forestry services are free.

www.dnr.illinois.gov/conservation/forestry/

Industry/Procurement Forester (industry) - a professional forester employed by a timber buyer, forest products company, sawmill, log broker, or log export company; forestry services usually offered on the basis of first-right-of-refusal to bid on the landowner’s standing timber.

Professional Forester - a successful graduate of a four-year college degree program accredited by the Society of American Foresters.

Forestry Technician - a successful graduate of a two-year technical forestry degree program; degree program may or may not be accredited by the Society of American Foresters.

Society of American Foresters (SAF) - the largest and most prestigious national scientific and educational organization representing the forestry profession in the United States.

Technical Service Providers (TSPs) - a natural resource professional certified by the USDA Natural Resources Conservation Service; TSPs as listed in this directory are qualified CAP-Forest Management Plan (106) writers; USDA TSPs are listed on the following website:

<http://techreg.usda.gov/CustLocateTSP.aspx>

Urban Forester (consultant) - a professional forester with expertise in the management and care of urban and community trees and forests; provides technical forestry assistance to homeowners, businesses, and municipalities; most urban foresters are certified arborists; forestry services are fee-based.

Urban Forester (municipal) - same as above; however, forestry services are *generally* free as municipal urban foresters are public employees.

Definitions: Forest Industry Workers

Certified Logger - a logger who has successfully completed a voluntary, yet extensive professional timber harvesting training program such as Game of Logging® or Master Logger, as conducted by a state forestry agency or a certified timber harvesting instructor; certified loggers should be used whenever possible.

Logger - an individual whose occupation is to harvest trees; may or may not be a licensed timber buyer.

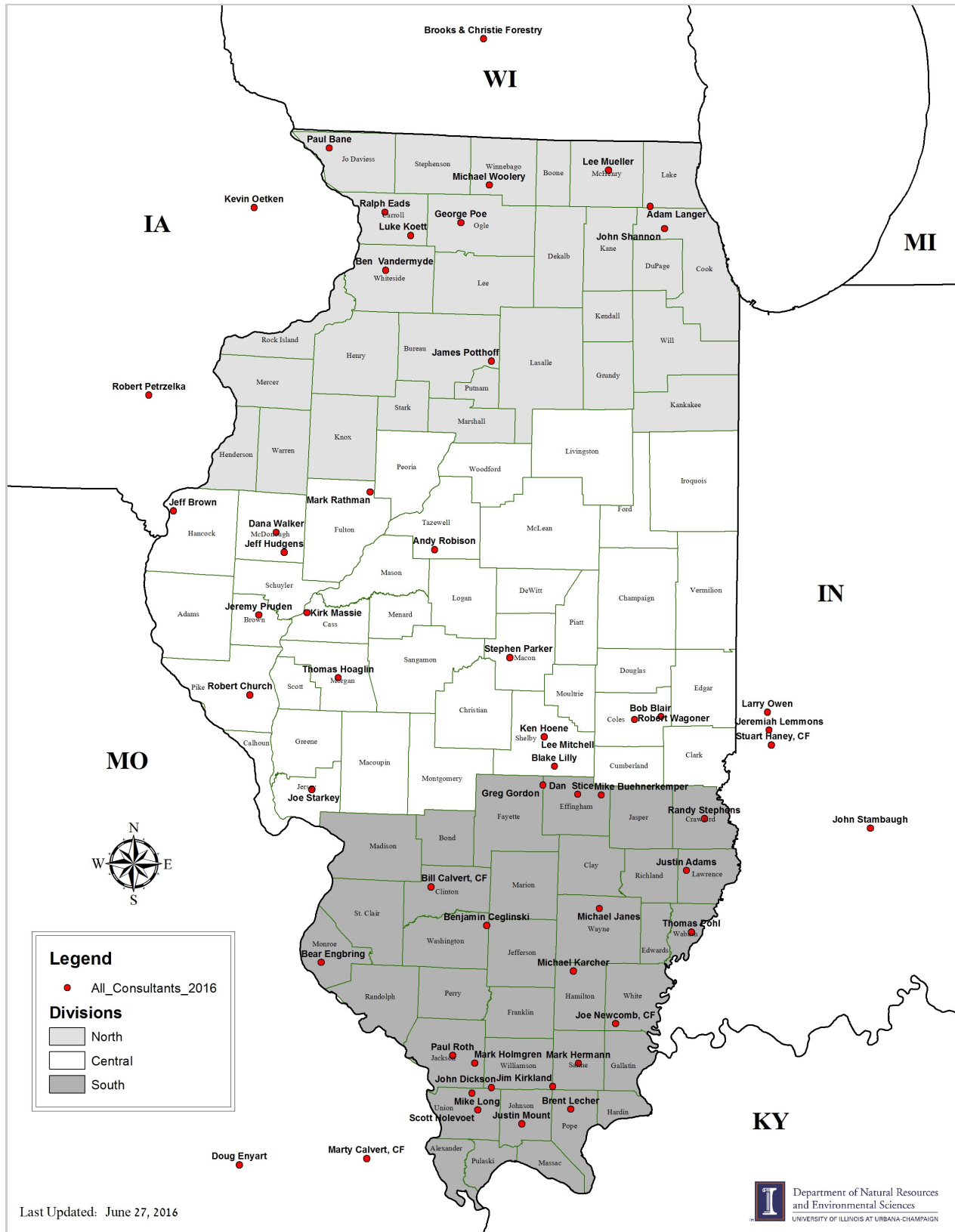
Timber/Log Broker - an individual, who may or may not be a licensed timber buyer, who offers to sell your standing timber or logs to prospective timber buyers or sawmills for a fee or commission; DO NOT confuse timber/log brokers with *independent* professional consulting foresters.

Timber Buyer - an individual who is licensed and bonded, by the Illinois Dept. of Natural Resources, to purchase standing timber and logs within the State of Illinois; it is illegal to purchase timber or logs in Illinois without a valid timber buyer’s license.

<http://dnr.illinois.gov/timberbuyers>

Please Note - The majority of timber buyers and loggers are hardworking, respectable business people; however, the vast majority of these men and women are not professional foresters. Therefore, please do not expect timber buyers or loggers to provide unbiased, science-based technical forestry assistance with regard to the short- and long-term management of your woodland investment.

Figure 1: General location of independent professional consulting foresters servicing Illinois woodland owners.



List of Consultants by County of Residence:

County of Residence	Name (Last, First)
Brown	Pruden, Jeremy (pg. 25)
Bureau	Pothoff, James (pg. 25)
Carroll	Eads, Ralph (pg. 12)
Carroll	Koett, Luke (pg. 17)
Cass	Massie, Kirk (pg. 20)
Clinton	Calvert, Bill (pg. 10)
Coles	Blair, Bob (pg. 9)
Coles	Wagoner, Robert (pg. 29)
Cook	Langer, Adam (pg. 18)
Cook	Shannon, John (pg. 27)
Crawford	Stephens, Randy (pg. 28)
Effingham	Buehnerkemper, Mike (pg. 10)
Effingham	Gordon, Greg (pg. 13)
Effingham	Stice, Dan (pg. 28)
Fulton	Rathman, Mark (pg. 25)
Hamilton	Karcher, Michael (pg. 16)
Hancock	Brown, Jeff (pg. 9)
Jo Daviess	Bane, Paul (pg. 8)
Jackson	Dickson, John (pg. 11)
Jackson	Holmgren, Mark (pg. 15)
Jackson	Roth, Paul (pg. 26)
Jersey	Starkey, Joe (pg. 27)
Jo Daviess	Bane, Paul (pg. 29)
Johnson	Mount, Justin (pg. 21)
Lawrence	Adams, Justin (pg. 8)
Macon	Parker, Stephen (pg. 23)
McDonough	Hudgens, Jeff (pg. 16)
McDonough	Walker, Dana (pg. 29)
McHenry	Mueller, Lee (pg. 22)
Monroe	Engbring, Bear (pg. 12)
Morgan	Hoaglin, Thomas (pg. 14)

List of Consultants by County (*continued*):

County of Residence	Name (Last, First)
Ogle	Poe, George (pg. 24)
Pike	Church, Robert (pg. 11)
Pope	Lecher, Brent (pg. 18)
Saline	Hermann, Mark (pg. 14)
Shelby	Hoene, Ken (pg. 15)
Shelby	Lilly, Blake (pg. 19)
Shelby	Mitchell, Lee (pg. 21)
Tazewell	Robison, Andy (pg. 26)
Union	Holevoet, Scott (pg. 15)
Union	Long, Mike (pg. 20)
Wabash	Pohl, Thomas (pg. 24)
Wayne	Janes, Michael (pg. 16)
Washington	Ceglinski, Benjamin (pg. 11)
White	Newcomb, Joe (pg. 22)
Whiteside	Vandermyde, Ben (pg. 28)
Williamson	Kirkland, Jim (pg. 17)
Winnebago	Woolery, Michael (pg. 30)
Indiana	Haney, Stuart (pg. 14)
	Lemmons, Jeremiah (pg. 19)
	Owen, Larry (pg. 23)
	Stambaugh, John (pg. 27)
Iowa	Oetken, Kevin (pg. 22)
	Petrzelka, Robert (pg. 24)
Michigan	Meyer, Shawna (pg. 21)
Missouri	Calvert, Marty (pg. 10)
	Enyart, Doug (pg. 13)
	Riggle, William (pg. 26)
Wisconsin	Brooks, Charles (pg. 9)
	Wittry, Matt (pg. 29)

Name:	Justin Adams	PROFESSIONAL FORESTRY SERVICES	
Company:	Honey Creek Forestry	<input checked="" type="checkbox"/> Appraisals: Trespass, Timber, and Forest land	<input type="checkbox"/> Biomass Marketing
Address:	6806 Bethany Lane Sumner, IL 62466	<input checked="" type="checkbox"/> Contractual Timber Work (TSI, crop tree release, pruning, etc.)	<input type="checkbox"/> Business Planning
Cell Phone:	(618) 553-6374	<input type="checkbox"/> Contractual Tree Planting (labor, tree, etc.)	<input type="checkbox"/> Carbon Sequestration & Carbon credits
Home Phone:	-----	<input type="checkbox"/> Expert Testimony & Litigation	<input type="checkbox"/> Christmas Tree Management
Email:	HoneyCreekForestry@gmail.com	<input checked="" type="checkbox"/> Forest Management Plans & Forest Inventory	<input checked="" type="checkbox"/> Conservation Stewardship Plans
Website:	-----	<input type="checkbox"/> Forest Valuation & Financial Analysis	<input type="checkbox"/> Ecological Restoration
Education:	B.S., Forest Resource Management, Southern Illinois University, 2007.		
NRCS TSP:	Yes; USDA-NRCS Technical Service Provider, CAP-Forest Management Plan (106), TSP-10-6647		
Experience:	Consulting forester since 2007		
Affiliations:	Illinois Forestry Association		
Service Area:	Southeast Illinois		

Name:	Paul Banc	PROFESSIONAL FORESTRY SERVICES	
Company:	Midwest Forestry Unlimited	<input checked="" type="checkbox"/> Appraisals: Trespass, Timber, and Forest land	<input type="checkbox"/> Biomass Marketing
Address:	712 Franklin St. Galena, IL 61036	<input checked="" type="checkbox"/> Contractual Timber Work (TSI, crop tree release, pruning, etc.)	<input type="checkbox"/> Business Planning
Phone:	(217) 840-7632	<input checked="" type="checkbox"/> Contractual Tree Planting (labor, trees, etc.)	<input checked="" type="checkbox"/> Christmas Tree Management
Fax:	-----	<input type="checkbox"/> Expert Testimony & Litigation	<input checked="" type="checkbox"/> Conservation Stewardship Plans
Email:	MidwestForestryUnlimited@gmail.com	<input checked="" type="checkbox"/> Forest Management Plans & Forest Inventory	<input checked="" type="checkbox"/> Ecological Restoration
Website:	MidwestForestryUnl.wix.com/forestry Facebook.com/MidwestForestryUnlimited	<input checked="" type="checkbox"/> Forest Valuation & Financial Analysis	<input checked="" type="checkbox"/> Environmental Planning & Assessments
Education:	B.S., Forestry (Natural Resource Management), Southern Illinois University, 2011.		
NRCS TSP:	Yes; USDA-NRCS Technical Service Provider, CAP-Forest Management Plan (106), CAP - Prescribed Burning Plan (112), TSP-16-20438		
Experience:	Our company has a combined 15 years of experience; Pesticide applicators license # CA 08555402		
Affiliations:	Society of American Foresters; Northwest Illinois Forestry Association; Illinois Forestry Association		
Insurance:	Commercial General Liability with Errors and Omissions		
Service Area:	Northern Illinois; Southern Wisconsin		

Name:	Bob Blair	PROFESSIONAL FORESTRY SERVICES	
Company:	-----	<input type="checkbox"/> Appraisals: Trespass, Timber, and Forest land	<input type="checkbox"/> Biomass Marketing
Address:	21885 E. Co Rd 1300 N. Ashmore, IL 61912	<input checked="" type="checkbox"/> Contractual Timber Work (TSI, crop tree release, pruning, etc.)	<input type="checkbox"/> Business Planning
Phone:	(217) 349-8688	<input checked="" type="checkbox"/> Contractual Tree Planting (labor, tree, etc.)	<input type="checkbox"/> Carbon Sequestration & Carbon credits
Fax:	(217) 349-8688	<input type="checkbox"/> Expert Testimony & Litigation	<input type="checkbox"/> Christmas Tree Management
Email:	bblair@consolidated.net	<input checked="" type="checkbox"/> Forest Management Plans & Forest Inventory	<input checked="" type="checkbox"/> Conservation Stewardship Plans
Website:	-----	<input type="checkbox"/> Forest Valuation & Financial Analysis	<input type="checkbox"/> Ecological Restoration
Education:	B.S., Forestry, Southern Illinois University, 1967.		
NRCS TSP:	Yes; USDA-NRCS Technical Service Provider, CAP-Forest Management Plan (106), TSP-10-6609		
Experience:	Consulting forester since 2000; Illinois Dept. of Natural Resources district forester for 32 years; USDA Forest Service for 2 years; Illinois Commercial Pesticide Applicators License #CA02967046		
Affiliations:	Illinois Forestry Association; Illinois Consulting Foresters Association		
Insurance:	General Liability & Worker's Comp.		
Service Area:	East-central Illinois		

Name:	Charles Brooks & Jeff Christie	PROFESSIONAL FORESTRY SERVICES	
Company:	Brooks and Christie Forestry Consultants, LLC	<input checked="" type="checkbox"/> Appraisals: Trespass, Timber, and Forest land	<input type="checkbox"/> Biomass Marketing
Address:	5805 Piping Rock Road Madison, WI 53711	<input checked="" type="checkbox"/> Contractual Timber Work (TSI, crop tree release, pruning, etc.)	<input type="checkbox"/> Business Planning
Phone:	(608) 270-1961	<input checked="" type="checkbox"/> Contractual Tree Planting (labor, tree, etc.)	<input checked="" type="checkbox"/> Carbon Sequestration & Carbon Credits
Fax:	(608) 270-1993	<input type="checkbox"/> Expert Testimony & Litigation	<input type="checkbox"/> Christmas Tree Management
Email:	chuck.brooks@bc-forestry.com	<input checked="" type="checkbox"/> Forest Management Plans & Forest Inventory	<input checked="" type="checkbox"/> Conservation Stewardship Plans
Website:	www.brookschristieforestry.com	<input checked="" type="checkbox"/> Forest Valuation & Financial Analysis	<input type="checkbox"/> Ecological Restoration
Education:	C. Brooks: B.S., Forestry, Univ. of Wisconsin – Madison, 1994. M.S., Forest Management, Univ. of Wisconsin – Madison, 1996. J. Christie: B.S., Forestry, University of Wisconsin – Stevens Point, 1975.		
Experience:	Consulting foresters since 1995; Wisconsin DNR cooperating forester and certified plan writer; commercial herbicide applicator; Certified Tree Farm Inspector.		
Affiliations:	Association of Consulting Foresters; Society of American Foresters; Wisconsin Consulting Foresters, Inc.; American Tree Farm System		
Insurance:	General Liability, Errors and Omissions		
Service Area:	Northern Illinois		

Name:	Jeff D. Brown	PROFESSIONAL FORESTRY SERVICES	
Company:	Brown's Forestry	<input checked="" type="checkbox"/> Appraisals: Trespass, Timber, and Forest land	<input type="checkbox"/> Biomass Marketing
Address:	2162 N County Road 800 Nauvoo, IL 62354	<input checked="" type="checkbox"/> Contractual Timber Work (TSI, crop tree release, pruning, etc.)	<input type="checkbox"/> Business Planning
Phone:	Cell (217) 242-6471	<input checked="" type="checkbox"/> Contractual Tree Planting (labor, tree, etc.)	<input type="checkbox"/> Carbon Sequestration & Carbon Credits
Fax:	-----	<input type="checkbox"/> Expert Testimony & Litigation	<input type="checkbox"/> Christmas Tree Management
Email:	btreeco@yahoo.com	<input checked="" type="checkbox"/> Forest Management Plans & Forest Inventory	<input checked="" type="checkbox"/> Conservation Stewardship Plans
Website:	-----	<input type="checkbox"/> Forest Valuation & Financial Analysis	<input type="checkbox"/> Ecological Restoration
Education:	B.S., Conservation, Western Illinois University, 1993.		
NRCS TSP:	Yes; USDA-NRCS Technical Service Provider, CAP-Forest Management Plan (106), TSP-10-6689		
Experience:	Consulting forester since 1993; planted 8,000 acres of tree; administer 3MMBF of timber sales annually; Illinois Commercial Pesticide License #06796537.		
Insurance:	\$2 million general liability; Workers Compensation		
Service Area:	West-central Illinois; Southeast Iowa; Northeast Missouri		

Name:	Mike Buehnerkemper	PROFESSIONAL FORESTRY SERVICES	
Company:	New Life Forestry Services	<input checked="" type="checkbox"/> Appraisals: Trespass, Timber, and Forest land	<input type="checkbox"/> Biomass Marketing
Address:	15773 E. 11420 th Ave. Teutopolis, IL 62467	<input checked="" type="checkbox"/> Contractual Timber Work (TSI, crop tree release, pruning, etc.)	<input type="checkbox"/> Business Planning
Phone:	(217) 343-6800	<input type="checkbox"/> Contractual Tree Planting (labor, tree, etc.)	<input type="checkbox"/> Carbon Sequestration & Carbon Credits
Fax:	-----	<input type="checkbox"/> Expert Testimony & Litigation	<input type="checkbox"/> Christmas Tree Management
Email:	newlifeforestry@mchsi.com	<input checked="" type="checkbox"/> Forest Management Plans & Forest Inventory	<input checked="" type="checkbox"/> Conservation Stewardship Plans
Website:		<input type="checkbox"/> Forest Valuation & Financial Analysis	<input type="checkbox"/> Ecological Restoration
Education:	B.S., Forest Management (minor in Wildlife Management & Recreation), Southern Illinois University, 1972.		
NRCS TSP:	Yes; USDA-NRCS Technical Service Provider, CAP-Forest Management Plan (106), TSP-09-6448		
Experience:	Forest management plan writing since 2006; Contractual timber work and invasive species removal since 2005; Resource Management II position with IL-DNR for five years; and Illinois Pesticide Applicators License.		
Affiliations:	Society of American Foresters; Illinois Forestry Association		
Insurance:	General Liability		
Service Area:	Southern Illinois; Missouri		

Name:	Bill Calvert, CF®	PROFESSIONAL FORESTRY SERVICES	
Company:	Consulting Forester	<input checked="" type="checkbox"/> Appraisals: Trespass, Timber, and Forest land	<input type="checkbox"/> Biomass Marketing
Address:	14419 Rod and Gun Rd. Breese, IL 62230	<input checked="" type="checkbox"/> Contractual Timber Work (TSI, crop tree release, pruning, etc.)	<input type="checkbox"/> Business Planning
Phone:	(618) 526-4251	<input type="checkbox"/> Contractual Tree Planting (labor, tree, etc.)	<input checked="" type="checkbox"/> Carbon Sequestration & Carbon Credits
Fax:	(618) 526-4251	<input checked="" type="checkbox"/> Expert Testimony & Litigation	<input type="checkbox"/> Christmas Tree Management
Email:	treedude@netwitz.net	<input checked="" type="checkbox"/> Forest Management Plans & Forest Inventory	<input checked="" type="checkbox"/> Conservation Stewardship Plans
Website:	-----	<input type="checkbox"/> Forest Valuation & Financial Analysis	<input type="checkbox"/> Ecological Restoration
Education:	B.S., Forest Management, Southern Illinois University, 1983.		
NRCS TSP:	Yes; USDA-NRCS Technical Service Provider, CAP-Forest Management Plan (106), TSP-03-1079		
Experience:	Consulting forester since 1992; Society of American Forester Certified Forester #1113; US Air Force forester 1986-2001; 1983-1986 nursery supervisor, field forester, park ranger, survey technician, utility pole inspector, landscaper, tree trimmer, and lab assistant.		
Affiliations:	Society of American Foresters; Illinois Consulting Foresters, Inc. (treasurer); Illinois Forestry Association; and Missouri Consulting Foresters Association.		
Insurance:	General Liability (\$500K); Errors and Omissions (\$100K) – Insurance Planning and Management, Okawville, IL		
Service Area:	Southern and central Illinois; Eastern and southeastern Missouri		

Name:	Marty Calvert, CF®	PROFESSIONAL FORESTRY SERVICES	
Company:	Marty Calvert, Forestry Consultant	<input checked="" type="checkbox"/> Appraisals: Trespass, Timber, and Forest land	<input type="checkbox"/> Biomass Marketing
Address:	HC 1, Box 104 Leopold, MO 63760	<input checked="" type="checkbox"/> Contractual Timber Work (TSI, crop tree release, pruning, etc.)	<input type="checkbox"/> Business Planning
Phone:	(573) 238-4945	<input type="checkbox"/> Contractual Tree Planting (labor, tree, etc.)	<input type="checkbox"/> Carbon Sequestration & Carbon Credits
Fax:	-----	<input checked="" type="checkbox"/> Expert Testimony & Litigation	<input type="checkbox"/> Christmas Tree Management
Email:	mrcalvert.forester@gmail.com	<input checked="" type="checkbox"/> Forest Management Plans & Forest Inventory	<input checked="" type="checkbox"/> Conservation Stewardship Plans
Website:	-----	<input checked="" type="checkbox"/> Forest Valuation & Financial Analysis	<input type="checkbox"/> Ecological Restoration
Education:	B.S., Forest Management, Southern Illinois University, 1986.		
Experience:	SAF Certified Forester #2191; Consulting forester since 2003; Missouri Dept. of Conservation forester for 20 years; Indiana Dept. of Natural Resources forester 7 years; Procurement forester for Indiana timber company 2 years; Professional Timber Harvester Program #354-R; Game of Logging™ 1989+; Western Wildfire GISS trainee 2008.		
Affiliations:	Society of American Foresters (SAF); Illinois Consulting Foresters, Inc.; and 4-H Youth Leader.		
Service Area:	Southwestern Illinois		

Name:	Benjamin Ceglinski	PROFESSIONAL FORESTRY SERVICES	
Company:	Tall Timber Consulting	<input type="checkbox"/> Appraisals: Trespass, Timber, and Forest land	<input type="checkbox"/> Biomass Marketing
Address:	PO Box 313 Irvington, IL 62848-0313	<input checked="" type="checkbox"/> Contractual Timber Work (TSI, crop tree release, pruning, etc.)	<input type="checkbox"/> Business Planning
Phone:	(618) 267-0674	<input type="checkbox"/> Contractual Tree Planting (labor, tree, etc.)	<input type="checkbox"/> Carbon Sequestration & Carbon Credits
Fax:	-----	<input type="checkbox"/> Expert Testimony & Litigation	<input type="checkbox"/> Christmas Tree Management
Email:	iltalltimber@yahoo.com	<input checked="" type="checkbox"/> Forest Management Plans & Forest Inventory	<input checked="" type="checkbox"/> Conservation Stewardship Plans
Website:	-----	<input type="checkbox"/> Forest Valuation & Financial Analysis	<input type="checkbox"/> Ecological Restoration
Education:	B.S., Forestry, Southern Illinois University, 2007.		
Experience:	Consulting forester since 2007.		
Service Area:	Southern Illinois		

Name:	Robert Church	PROFESSIONAL FORESTRY SERVICES	
Company:	Church's Forestry Consulting	<input checked="" type="checkbox"/> Appraisals: Trespass, Timber, and Forest land	<input type="checkbox"/> Biomass Marketing
Address:	45088 251 st Avenue Pittsfield, IL 62363	<input type="checkbox"/> Contractual Timber Work (TSI, crop tree release, pruning, etc.)	<input type="checkbox"/> Business Planning
Phone:	(217) 836-0253	<input type="checkbox"/> Contractual Tree Planting (labor, tree, etc.)	<input type="checkbox"/> Carbon Sequestration & Carbon Credits
Fax:	-----	<input type="checkbox"/> Expert Testimony & Litigation	<input checked="" type="checkbox"/> Christmas Tree Management
Email:	forestr@irtc.net	<input checked="" type="checkbox"/> Forest Management Plans & Forest inventory	<input checked="" type="checkbox"/> Conservation Stewardship Plans
Website:	-----	<input type="checkbox"/> Forest Valuation & Financial Analysis	<input type="checkbox"/> Ecological Restoration
Education:	B.S., Forest Resource Management, Southern Illinois University, 1974.		
NRCS TSP:	Yes; USDA-NRCS Technical Service Provider, CAP-Forest Management Plan (106), TSP-09-6411		
Experience:	25+ years IDNR District Forester; 9 years Log Procurement Mgr.; 3 yrs. Ames Tools Plant Mgr.; Illinois Department of Agriculture Pesticide Applicator's License.		
Affiliations:	Illinois Forestry Association, Illinois Tree Farm Committee, and National Arbor Day Foundation		
Insurance:	Professional Liability Insurance (\$500,000)		
Service Area:	Western Illinois: Adams, Brown, Calhoun, Pike and Scott Counties		

Name:	John W. Dickson	PROFESSIONAL FORESTRY SERVICES	
Company:	Dickson Resource Alternatives	<input checked="" type="checkbox"/> Appraisals: Trespass, Timber, and Forest land	<input checked="" type="checkbox"/> Biomass Marketing
Address:	57 Dickson Road Makanda, IL 62958	<input checked="" type="checkbox"/> Contractual Timber Work (TSI, crop tree release, pruning, etc.)	<input checked="" type="checkbox"/> Business Planning
Phone:	(618) 457-4871 (618) 528-0300	<input type="checkbox"/> Contractual Tree Planting (labor, tree, etc.)	<input checked="" type="checkbox"/> Carbon Sequestration & Carbon Credits
Fax:	-----	<input checked="" type="checkbox"/> Expert Testimony & Litigation	<input type="checkbox"/> Christmas Tree Management
Email:	jwd4ra@frontier.com	<input checked="" type="checkbox"/> Forest Management Plans & Forest Inventory	<input checked="" type="checkbox"/> Conservation Stewardship Plans
Website:	-----	<input checked="" type="checkbox"/> Forest Valuation & Financial Analysis	<input checked="" type="checkbox"/> Ecological Restoration
Education:	M.S., Forestry & Silviculture, Southern Illinois University, 1970. B.S., Forestry, Southern Illinois University, 1969.		
Experience:	Consulting forester since 1972; taught forestry technology for 9 years; IDNR district & regional forester 2.5 years; energy conservation; and custom sawmilling; Contractual timber work, herbicide application, and invasive species control services offered via sub-contractors.		
Insurance:	Yes		
Service Area:	Central and southern Illinois; western Kentucky; and southeast Missouri		

Name:	Ralph E. Eads	PROFESSIONAL FORESTRY SERVICES	
Company:	Private Consultant	<input type="checkbox"/> Appraisals: Trespass, Timber, and Forest land	<input type="checkbox"/> Biomass Marketing
Address:	602 E. Washington St. Mt. Carroll, IL 61053	<input checked="" type="checkbox"/> Contractual Timber Work (TSI, crop tree release, pruning, etc.)	<input type="checkbox"/> Business Planning
Phone:	(815) 244-9539	<input type="checkbox"/> Contractual Tree Planting (labor, tree, etc.)	<input checked="" type="checkbox"/> Carbon Sequestration & Carbon Credits
Fax:	-----	<input type="checkbox"/> Expert Testimony & Litigation	<input type="checkbox"/> Christmas Tree Management
Email:	2eads.r.l@gmail.com	<input checked="" type="checkbox"/> Forest Management Plans & Forest Inventory	<input checked="" type="checkbox"/> Conservation Stewardship Plans
Website:	-----	<input type="checkbox"/> Forest Valuation & Financial Analysis	<input type="checkbox"/> Ecological Restoration
Education:	B.S., Forestry, Southern Illinois University, 1970.		
NRCS TSP:	Yes; USDA-NRCS Technical Service Provider, CAP-Forest Management Plan (106), TSP-10-6656		
Experience:	IDNR district forester for 37 years; Certified Tree Farm Inspector 37 years; and Consulting forester since 2006.		
Affiliations:	Northwest Illinois Forestry Association, American Tree Farm System, and Illinois Forestry Association		
Insurance:	General Liability		
Service Area:	Northwest Illinois; Southwest Wisconsin		

Name:	Bear L. Engbring	PROFESSIONAL FORESTRY SERVICES	
Company:	Big River Forestry	<input type="checkbox"/> Appraisals: Trespass, Timber, and Forest land	<input type="checkbox"/> Biomass Marketing
Address:	P.O. Box 135 Maeystown, IL 62256	<input checked="" type="checkbox"/> Contractual Timber Work (TSI, crop tree release, pruning, etc.)	<input checked="" type="checkbox"/> Business Planning
Phone:	(870) 723-2743	<input checked="" type="checkbox"/> Contractual Tree Planting (labor, tree, etc.)	<input type="checkbox"/> Carbon Sequestration & Carbon Credits
Fax:	-----	<input type="checkbox"/> Expert Testimony & Litigation	<input type="checkbox"/> Christmas Tree Management
Email:	Bear.Engbring@BigRiverForestry.com	<input checked="" type="checkbox"/> Forest Management Plans & Forest Inventory	<input checked="" type="checkbox"/> Conservation Stewardship Plans
Website:	www.BigRiverForestry.com	<input checked="" type="checkbox"/> Forest Valuation & Financial Analysis	<input checked="" type="checkbox"/> Ecological Restoration
Education:	M.S., Forest Ecology, University of Arkansas, 2005. B.S., Forest Management, Southern Illinois University, 2001.		
Experience:	Consulting forester since 2006; USDA Forest Service forest technician (Fire) for 3 years; Graduate research assistant (forest ecology) 2 years.		
Affiliations:	Xi Sigma Pi Forestry National Honor Society		
Coverage:	Commercial General Liability – Pekin Insurance Company		
Service Area:	Southern Illinois; and adjacent states		

Name:	Doug A. Enyart, ACF™, CF® , CA	PROFESSIONAL FORESTRY SERVICES	
Company:	Clearwater Forest Consultants, LLC.	<input checked="" type="checkbox"/> Appraisals: Trespass, Timber, and Forest land	<input checked="" type="checkbox"/> Biomass Marketing
Address:	PO Box 176 Piedmont, MO 63957	<input type="checkbox"/> Contractual Timber Work (TSl, crop tree release, pruning, etc.)	<input checked="" type="checkbox"/> Business Planning
Phone:	Office: (573) 223-7010 Cell: (573) 429-7800	<input type="checkbox"/> Contractual Tree Planting (labor, tree, etc.)	<input checked="" type="checkbox"/> Carbon Sequestration & Carbon Credits
Fax:	(573) 223-2185	<input checked="" type="checkbox"/> Expert Testimony & Litigation	<input type="checkbox"/> Christmas Tree Management
Email:	cfc@semo.net	<input checked="" type="checkbox"/> Forest Management Plans & Forest Inventory	<input checked="" type="checkbox"/> Conservation Stewardship Plans
Website:	www.ClearwaterForestConsultants.com	<input checked="" type="checkbox"/> Forest Valuation & Financial Analysis	<input checked="" type="checkbox"/> Ecological Restoration
Education:	B.S., Forestry, Humboldt State University, 1985.	<input type="checkbox"/> GPS & GIS Mapping Services	<input checked="" type="checkbox"/> Environmental Planning & Assessments
NRCS TSP:	Yes; USDA-NRCS Technical Service Provider, CAP-Forest Management Plan (106), TSP-03-1267	<input checked="" type="checkbox"/> Herbicide Application & Recommendations	<input type="checkbox"/> Habitat Establishment (food plots, grasses)
Experience:	Owner/Founder/Senior forester Clearwater Forest Consultants, LLC since 1998; Missouri Dept. of Conservation resource forester 1988-1998; Sierra Pacific Industries 1988; Wulfert Consulting Forestry associate forester 1987; Champion International junior forester 1985-1986; Klamath National Forest forestry aide 1984; Inyo National Forest forestry technician 1983; Six Rivers National Forest independent survey contractor 1982.	<input checked="" type="checkbox"/> Invasive Species Control / Removal	<input checked="" type="checkbox"/> Insect & Disease Evaluation
Professional Affiliations:	Association of Consulting Foresters; International Society of Arboriculture; Certified Arborist #MW-4885A; Society of American Foresters; Society of American Foresters Certified Forester #961; Certified Tree Farm Inspector #6700; Center for Forest & Wood Certification—Cooperating forester; Arkansas Registered Forester #822; Arkansas Registered Appraiser #SR1933N; Missouri Commercial Pesticide License #C10403; Quality Deer Management Assoc.—Land Certification Inspector; Missouri Consulting Foresters Association.	<input checked="" type="checkbox"/> Prescribed Fire & Controlled Burn Plans	<input checked="" type="checkbox"/> Recreation Planning & Development
Insurance:	Professional Foresters Omissions & Errors, General Liability, Group Hunt Lease, Vehicle Fleet, Hired & Non-Owned Vehicle, Hazard (office).	<input type="checkbox"/> Timber Cost Basis & Taxation	<input checked="" type="checkbox"/> Urban Forestry / Arboriculture
Service Area:	All of Illinois; All of Missouri, Arkansas, Indiana, Kentucky, Tennessee, Oklahoma, Kansas, and other states as needed.	<input checked="" type="checkbox"/> Timber Sale Administration & Marketing	<input checked="" type="checkbox"/> Wildlife Management

Name:	Greg Gordon	PROFESSIONAL FORESTRY SERVICES	
Company:	Forest Resources	<input checked="" type="checkbox"/> Appraisals: Trespass, Timber, and Forest land	<input type="checkbox"/> Biomass Marketing
Address:	RR 2 Box 203 Beecher City, IL 62414	<input checked="" type="checkbox"/> Contractual Timber Work (TSl, crop tree release, pruning, etc.)	<input type="checkbox"/> Business Planning
Phone:	Mobile: (618) 553-2508	<input checked="" type="checkbox"/> Contractual Tree Planting (labor, tree, etc.)	<input type="checkbox"/> Carbon Sequestration & Carbon Credits
Fax:	-----	<input type="checkbox"/> Expert Testimony & Litigation	<input type="checkbox"/> Christmas Tree Management
Email:	gngtimber622@hotmail.com	<input checked="" type="checkbox"/> Forest Management Plans & Forest Inventory	<input checked="" type="checkbox"/> Conservation Stewardship Plans
Website:	-----	<input type="checkbox"/> Forest Valuation & Financial Analysis	<input type="checkbox"/> Ecological Restoration
Education:	B.S., Forestry, Southern Illinois University, 2001.	<input type="checkbox"/> GPS & GIS Mapping Services	<input type="checkbox"/> Environmental Planning & Assessments
NRCS TSP:	Yes; USDA-NRCS Technical Service Provider, CAP-Forest Management Plan (106), TSP-09-6275	<input type="checkbox"/> Herbicide Application & Recommendations	<input checked="" type="checkbox"/> Habitat Establishment (food plots, grasses, etc.)
Experience:	Consulting forester since 2001; Trained in “Project Wild”	<input checked="" type="checkbox"/> Invasive Species Control / Removal	<input type="checkbox"/> Insect & Disease Evaluation
Affiliations:	Society of American Foresters; Illinois Forestry Association; and Ducks Unlimited	<input type="checkbox"/> Prescribed Fire & Controlled Burn Plans	<input type="checkbox"/> Recreation Planning & Development
Insurance:	General Liability	<input type="checkbox"/> Timber Cost Basis & Taxation	<input type="checkbox"/> Urban Forestry / Arboriculture
Service Area:	Central and southern Illinois	<input checked="" type="checkbox"/> Timber Sale Administration & Marketing	<input checked="" type="checkbox"/> Wildlife Management

Name:	Stuart Haney, CF®	PROFESSIONAL FORESTRY SERVICES	
Company:	Haney Forestry, LLC	<input checked="" type="checkbox"/> Appraisals: Trespass, Timber, and Forest land	<input type="checkbox"/> Biomass Marketing
Address:	PO Box 512 Riley, IN 47871	<input checked="" type="checkbox"/> Contractual Timber Work (TSI, crop tree release, pruning, etc.)	<input type="checkbox"/> Business Planning
Phone:	(812) 894-2360 (812) 243-1323	<input type="checkbox"/> Contractual Tree Planting by hand (expert advice)	<input checked="" type="checkbox"/> Carbon Sequestration & Carbon Credits
Fax:	(812) 894-2360	<input checked="" type="checkbox"/> Expert Testimony & Litigation	<input type="checkbox"/> Christmas Tree Management
Email:	stu@haneyforestry.com	<input checked="" type="checkbox"/> Forest Management Plans & Forest Inventory	<input checked="" type="checkbox"/> Conservation Stewardship Plans
Website:	www.haneyforestry.com	<input checked="" type="checkbox"/> Forest Valuation & Financial Analysis	<input checked="" type="checkbox"/> Ecological Restoration
Education:	B.S., Forest Management, Southern Illinois University, 2002. A.A.S., Forest Technology, Southeastern Illinois College, 1999.		
Experience:	SAF Certified Forester #3963; qualified Tree Farm inspector; Illinois Commercial Pesticide Applicators License #91818810; Game of Logging™ 1998; consulting forester with Forest Management Services for 5 years, Confluence Timber, Inc. for 1 year, Purdue Extension Forestry 1 year; Indiana DNR assistant district forester 1 year; and Xi Sigma Pi Forestry Honor Society at SIUC.		
Affiliations:	Society of American Foresters; Indiana Forestry and Woodland Owners Association; and Sycamore Trails RC&D.		
Insurance:	Fully Insured through Erie Insurance		
Service Area:	East-central and central Illinois; Indiana		

Name:	Mark Hermann	PROFESSIONAL FORESTRY SERVICES	
Company:	Long Forestry Consultation, LLC	<input checked="" type="checkbox"/> Appraisals: Trespass, Timber, and Forest land	<input type="checkbox"/> Biomass Marketing
Address:	P.O. Box 288 Harrisburg, IL 62946	<input checked="" type="checkbox"/> Contractual Timber Work (TSI, crop tree release, pruning, etc.)	<input type="checkbox"/> Business Planning
Phone:	618-893-2307	<input checked="" type="checkbox"/> Contractual Tree Planting (labor, trees, etc.)	<input checked="" type="checkbox"/> Carbon Sequestration & Carbon credits
Fax:		<input type="checkbox"/> Expert Testimony & Litigation	<input type="checkbox"/> Christmas Tree Management
Email:	mark@longforestry.com	<input checked="" type="checkbox"/> Forest Management Plans & Forest Inventory	<input checked="" type="checkbox"/> Conservation Stewardship Plans
Website:	www.longforestry.com	<input checked="" type="checkbox"/> Forest Valuation & Financial Analysis	<input checked="" type="checkbox"/> Ecological Restoration
Education:	B.S., Forest Recreation, Southern Illinois University, 2013.		
NRCS TSP:	Yes via Mike Long w/ Long Forestry Consultation; USDA-NRCS Technical Service Provider, CAP-Forest Management Plan (106), TSP-07-5882		
Experience:	Long Forestry Consultation - July 2013 to Present		
Affiliations:	Society of American Foresters, Illinois Consulting Foresters		
Insurance:	\$1 million per occurrence, \$2 million Aggregate, \$1 million Auto, \$1 million workers compensation		
Service Area:	Southeastern Illinois, Western Kentucky, Southwestern Indiana		

Name:	Thomas Hoaglin	PROFESSIONAL FORESTRY SERVICES	
Company:	Centennial Forestry Consulting	<input checked="" type="checkbox"/> Appraisals: Trespass, Timber, and Forest land	<input type="checkbox"/> Biomass Marketing
Address:	30 Gettysburg Dr Apt B Jacksonville, IL 62650-1589	<input checked="" type="checkbox"/> Contractual Timber Work (TSI, crop tree release, pruning, etc.)	<input type="checkbox"/> Business Planning
Phone:	(217) 248-6628	<input checked="" type="checkbox"/> Contractual Tree Planting (labor, tree, etc.)	<input type="checkbox"/> Carbon Sequestration & Carbon Credits
Fax:	-----	<input type="checkbox"/> Expert Testimony & Litigation	<input type="checkbox"/> Christmas Tree Management
Email:	CentennialForestry@yahoo.com	<input checked="" type="checkbox"/> Forest Management Plans & Forest Inventory	<input checked="" type="checkbox"/> Conservation Stewardship Plans
Website:	-----	<input type="checkbox"/> Forest Valuation & Financial Analysis	<input type="checkbox"/> Ecological Restoration
Education:	B.S., Forest Resource Management, Southern Illinois University, 2004.		
Experience:	Consulting forester since 2004; three years' experience in urban forestry; conservation worker for IL Dept. of Natural Resources.		
Affiliations:	Society of American Foresters		
Insurance:	Available upon request		
Service Area:	West-central and central Illinois		

Name:	Ken Hoene	PROFESSIONAL FORESTRY SERVICES	
Company:	Timber Services Inc.	<input checked="" type="checkbox"/> Appraisals: Trespass, Timber, and Forest land	<input type="checkbox"/> Biomass Marketing
Address:	RR 1 Box 247A Shelbyville, IL 62565	<input checked="" type="checkbox"/> Contractual Timber Work (TSI, crop tree release, pruning, etc.)	<input type="checkbox"/> Business Planning
Phone:	217-825-3253	<input checked="" type="checkbox"/> Contractual Tree Planting (labor, tree, etc.)	<input type="checkbox"/> Carbon Sequestration & Carbon Credits
Fax:	-----	<input checked="" type="checkbox"/> Expert Testimony & Litigation	<input checked="" type="checkbox"/> Christmas Tree Management
Email:	timberservices@yahoo.com	<input checked="" type="checkbox"/> Forest Management Plans & Forest Inventory	<input checked="" type="checkbox"/> Conservation Stewardship Plans
Website:	-----	<input checked="" type="checkbox"/> Forest Valuation & Financial Analysis	<input checked="" type="checkbox"/> Ecological Restoration
Education:	B.S., Forestry, University of Illinois, 1974.	<input type="checkbox"/> GPS & GIS Mapping Services	<input checked="" type="checkbox"/> Environmental Planning & Assessments
NRCS TSP:	Yes; USDA-NRCS Technical Service Provider, CAP-Forest Management Plan (106), TSP-10-6514	<input checked="" type="checkbox"/> Herbicide Application & Recommendations	<input checked="" type="checkbox"/> Habitat Establishment (food plots, grasses, etc.)
Experience:	Forestry Consultant and Christmas Tree Grower since 1976; and Native Seedling Nursery Grower and Tree Planting Services since 1986	<input checked="" type="checkbox"/> Invasive Species Control / Removal	<input checked="" type="checkbox"/> Insect & Disease Evaluation
Affiliations:	IL Consulting Foresters, Inc.; Member of the Kaskaskia River Watershed	<input type="checkbox"/> Prescribed Fire & Controlled Burn Plans	<input type="checkbox"/> Recreation Planning & Development
Insurance:	Workman comp, general liability, and herbicide insurance	<input type="checkbox"/> Timber Cost Basis & Taxation	<input type="checkbox"/> Urban Forestry / Arboriculture
Service Area:	All of Illinois	<input checked="" type="checkbox"/> Timber Sale Administration & Marketing	<input checked="" type="checkbox"/> Wildlife Management

Name:	Scott Holevoet	PROFESSIONAL FORESTRY SERVICES	
Company:	Arbor1 Tree Care and Forestry Consulting	<input type="checkbox"/> Appraisals: Trespass, Timber, and Forest land	<input type="checkbox"/> Biomass Marketing
Address:	812 E Davie St. Anna, IL 62906	<input checked="" type="checkbox"/> Contractual Timber Work (TSI, crop tree release, pruning, etc.)	<input type="checkbox"/> Business Planning
Phone:	(618) 713-1051	<input checked="" type="checkbox"/> Contractual Tree Planting (labor, tree, etc.)	<input type="checkbox"/> Carbon Sequestration & Carbon Credits
Fax:	-----	<input type="checkbox"/> Expert Testimony & Litigation	<input type="checkbox"/> Christmas Tree Management
Email:	sholevoet@hotmail.com	<input checked="" type="checkbox"/> Forest Management Plans & Forest Inventory	<input checked="" type="checkbox"/> Conservation Stewardship Plans
Website:	-----	<input type="checkbox"/> Forest Valuation & Financial Analysis	<input type="checkbox"/> Ecological Restoration
Education:	B.S., Forest Resource Management, Southern Illinois University, 2002.	<input type="checkbox"/> GPS & GIS Mapping Services	<input type="checkbox"/> Environmental Planning & Assessments
NRCS TSP:	Yes; USDA-NRCS Technical Service Provider, CAP-Forest Management Plan (106), TSP-10-6729	<input checked="" type="checkbox"/> Herbicide Application & Recommendations	<input checked="" type="checkbox"/> Habitat Establishment (food plots, grasses, etc.)
Experience:	Five years consulting experience (Forestland Management, Utility Arboriculture); USFWS Forest Technician; Certified Arborist	<input checked="" type="checkbox"/> Invasive Species Control / Removal	<input checked="" type="checkbox"/> Insect & Disease Evaluation
Insurance:	Yes; Call for details	<input type="checkbox"/> Prescribed Fire & Controlled Burn Plans	<input checked="" type="checkbox"/> Recreation Planning & Development
Service Area:	Southern Illinois; Missouri; Indiana; and Kentucky	<input type="checkbox"/> Timber Cost Basis & Taxation	<input checked="" type="checkbox"/> Urban Forestry / Arboriculture
		<input type="checkbox"/> Timber Sale Administration & Marketing	<input checked="" type="checkbox"/> Wildlife Management

Name:	Mark Holmgren	PROFESSIONAL FORESTRY SERVICES	
Company:	Timbermark Forestry Consulting	<input checked="" type="checkbox"/> Appraisals: Trespass, Timber, and Forest land	<input type="checkbox"/> Biomass Marketing
Address:	38 S. New Thompson Lake Rd Carbondale, IL 62901-5340	<input checked="" type="checkbox"/> Contractual Timber Work (TSI, crop tree release, pruning, etc.)	<input type="checkbox"/> Business Planning
Phone:	Office: (618) 252-4647 Mobile: (618) 528-6146	<input checked="" type="checkbox"/> Contractual Tree Planting (labor, tree, etc.)	<input type="checkbox"/> Carbon Sequestration & Carbon Credits
Fax:	(618) 252-4647	<input checked="" type="checkbox"/> Expert Testimony & Litigation	<input type="checkbox"/> Christmas Tree Management
Email:	timbermark@hotmail.com	<input checked="" type="checkbox"/> Forest Management Plans & Forest Inventory	<input checked="" type="checkbox"/> Conservation Stewardship Plans
Website:	-----	<input checked="" type="checkbox"/> Forest Valuation & Financial Analysis	<input type="checkbox"/> Ecological Restoration
Education:	A.A.S., Forest Technology, Southeastern Illinois College, 1983.	<input type="checkbox"/> GPS & GIS Mapping Services	<input type="checkbox"/> Environmental Planning & Assessments
Experience:	Full-time consulting forester since 1989	<input type="checkbox"/> Herbicide Application & Recommendations	<input type="checkbox"/> Habitat Establishment (food plots, grasses, etc.)
Affiliations:	Illinois Consulting Foresters, Inc.	<input type="checkbox"/> Invasive Species Control / Removal	<input type="checkbox"/> Insect & Disease Evaluation
Service Area:	Southern Illinois (south of I-64)	<input type="checkbox"/> Prescribed Fire & Controlled Burn Plans	<input type="checkbox"/> Recreation Planning & Development
		<input checked="" type="checkbox"/> Timber Cost Basis & Taxation	<input type="checkbox"/> Urban Forestry / Arboriculture
		<input checked="" type="checkbox"/> Timber Sale Administration & Marketing	<input type="checkbox"/> Wildlife Management

Name:	Jeff W. Hudgens	PROFESSIONAL FORESTRY SERVICES	
Company:	Prairie Hills Forestry Consulting	<input checked="" type="checkbox"/> Appraisals: Trespass, Timber, and Forest land	<input type="checkbox"/> Biomass Marketing
Address:	13860N 225 th Rd. Industry, IL 61440	<input checked="" type="checkbox"/> Contractual Timber Work (TSI, crop tree release, pruning, etc.)	<input type="checkbox"/> Business Planning
Phone:	(309) 254-3665	<input type="checkbox"/> Contractual Tree Planting (labor, tree, etc.)	<input checked="" type="checkbox"/> Carbon Sequestration & Carbon Credits
Fax:	-----	<input type="checkbox"/> Expert Testimony & Litigation	<input type="checkbox"/> Christmas Tree Management
Email:	jeff@prairiehillsforestry.com	<input checked="" type="checkbox"/> Forest Management Plans & Forest Inventory	<input checked="" type="checkbox"/> Conservation Stewardship Plans
Website:	www.PrairieHillsForestry.com	<input type="checkbox"/> Forest Valuation & Financial Analysis	<input type="checkbox"/> Ecological Restoration
Education:	B.S., Forest Resource Management, Southern Illinois University, 1989.		
NRCS TSP:	Yes; USDA-NRCS Technical Service Provider, CAP-Forest Management Plan (106), TSP-09-6367		
Experience:	Consulting forester since 1993; The Morton Arboretum for 3 years; USDA Forest Service for 2 years.		
Affiliations:	Walnut Council		
Insurance:	Liability and Workers Comp		
Service Area:	West-central Illinois: Adams, Brown, Fulton, Hancock, Henderson, McDonough, Pike, Schuyler, and Warren.		

Name:	Michael Janes	PROFESSIONAL FORESTRY SERVICES	
Company:	-----	<input checked="" type="checkbox"/> Appraisals: Trespass, Timber, and Forest land	<input type="checkbox"/> Biomass Marketing
Address:	1673 Co Rd 1900N Cisne, IL 62823	<input type="checkbox"/> Contractual Timber Work (TSI, crop tree release, pruning, etc.)	<input type="checkbox"/> Business Planning
Phone:	(618) 673-2794	<input type="checkbox"/> Contractual Tree Planting (labor, tree, etc.)	<input type="checkbox"/> Carbon Sequestration & Carbon Credits
Fax:	-----	<input type="checkbox"/> Expert Testimony & Litigation	<input type="checkbox"/> Christmas Tree Management
Email:	mbjanes@yahoo.com	<input type="checkbox"/> Forest Management Plans & Forest Inventory	<input type="checkbox"/> Conservation Stewardship Plans
Website:	-----	<input type="checkbox"/> Forest Valuation & Financial Analysis	<input type="checkbox"/> Ecological Restoration
Education:	B.S., Forest Management, Southern Illinois University, 1971.		
Experience:	1972-1998 owner/operator of M&M Tree Farm and Landscaping Service; Consulting forester since 1985.		
Service Area:	Southeastern Illinois		

Name:	Michael C. Karcher, CF®	PROFESSIONAL FORESTRY SERVICES	
Company:	Karcher's Forestry Services, Inc.	<input checked="" type="checkbox"/> Appraisals: Trespass, Timber, and Forest land	<input type="checkbox"/> Biomass Marketing
Address:	4731 Dahlgren E Road Dahlgren, IL 62828	<input checked="" type="checkbox"/> Contractual Timber Work (TSI, crop tree release, pruning, etc.)	<input type="checkbox"/> Business Planning
Phone:	(618) 736-2341 (618) 599-1735	<input type="checkbox"/> Contractual Tree Planting (labor, tree, etc.)	<input type="checkbox"/> Carbon Sequestration & Carbon Credits
Fax:	(618) 736-2341	<input type="checkbox"/> Expert Testimony & Litigation	<input type="checkbox"/> Christmas Tree Management
Email:	karcher@hamiltoncom.net	<input checked="" type="checkbox"/> Forest Management Plans & Forest Inventory	<input checked="" type="checkbox"/> Conservation Stewardship Plans
Website:	www.IllinoisForestry.com	<input type="checkbox"/> Forest Valuation & Financial Analysis	<input type="checkbox"/> Ecological Restoration
Education:	M.S., Forestry, Southern Illinois University, 1976. B.S., Forestry, Southern Illinois University, 1975.		
NRCS TSP:	Yes; USDA-NRCS Technical Service Provider, CAP-Forest Management Plan (106), TSP-03-1489		
Experience:	Owner and full time consulting forester of Karcher's Forestry Services, Inc. since 2002; Society of American Foresters Certified Forester #3970; consultant for FHM Diversified Wood Products Inc., Louisiana, MO 1992-1997; Illinois Pesticide Applicator's License #06509511.		
Affiliations:	Society of American Foresters (SAF); SAF Certified Forester #3970; Illinois Consulting Foresters, Inc. (president).		
Insurance:	Commercial General Liability with Praetorian Insurance Company		
Service Area:	Southern and central Illinois; southwestern Indiana; and western Kentucky		

Name:	Jim Kirkland	PROFESSIONAL FORESTRY SERVICES	
Company:	Big Griz Forestry	<input checked="" type="checkbox"/> Appraisals: timber, land, trespass, and damage	<input type="checkbox"/> Biomass marketing
Address:	1259 Fritts Road Stonefort, IL 62987	<input type="checkbox"/> Contractual timber work (TSI, crop tree release, pruning, etc.)	<input type="checkbox"/> Business planning
Phone:	(618) 994-4006 (618) 695-3383	<input checked="" type="checkbox"/> Contractual tree planting (labor, trees, etc.)	<input type="checkbox"/> Carbon sequestration & carbon credits
Fax:	-----	<input checked="" type="checkbox"/> Expert testimony & litigation	<input type="checkbox"/> Christmas tree management
Email:	1984kirk@gmail.com	<input checked="" type="checkbox"/> Forest management plans & forest inventory	<input checked="" type="checkbox"/> Conservation Stewardship Plans
Website:	-----	<input checked="" type="checkbox"/> Forest valuation & financial analysis	<input type="checkbox"/> Ecological restoration
Education:	B.S., Forest Management, Southern Illinois University, 1991. A.A.S. Forest Technology, Southeastern Illinois College, 1979.		
NRCS TSP:	Yes; USDA-NRCS Technical Service Provider, CAP-Forest Management Plan (106), TSP-03-2455		
Experience:	Consulting forester; Southeastern Illinois College, Forestry Instructor, 1997-2002, Class list included Timber Harvesting & Forest Protection (Fire/Insect/Disease), Arboriculture, Game of Logging™ instructor 1997-2004; NWCG, S-212 Wildland Powersaw Trainer, 1997-2004; Procurement/Hardwood Management Forester/Walnut & Pine Plantation Manager, Averitt Lumber, IL, KY & TN 1984-1997; Log crew member, Westvaco Corp.		
Professional Affiliations:	Society of American Foresters; Illinois Forestry Association		
Insurance Coverage:	Call for Information		
Service Area:	Southern Illinois: Alexander, Franklin, Gallatin, Hamilton, Hardin, Jackson, Jefferson, Johnson, Massac, Perry, Pope, Pulaski, Sa, Union, Wayne, and White County.		

Name:	Luke Koett	PROFESSIONAL FORESTRY SERVICES	
Company:	Midwest Forestry Unlimited	<input checked="" type="checkbox"/> Appraisals: Trespass, Timber, and Forest land	<input type="checkbox"/> Biomass Marketing
Address:	304 Hagar Ave. Milledgeville, IL 61051	<input checked="" type="checkbox"/> Contractual Timber Work (TSI, crop tree release, pruning, etc.)	<input type="checkbox"/> Business Planning
Phone:	(815) 441-0091	<input checked="" type="checkbox"/> Contractual Tree Planting (labor, trees, etc.)	<input checked="" type="checkbox"/> Christmas Tree Management
Fax:	-----	<input type="checkbox"/> Expert Testimony & Litigation	<input checked="" type="checkbox"/> Conservation Stewardship Plans
Email:	MidwestForestryUnlimited@gmail.com	<input checked="" type="checkbox"/> Forest Management Plans & Forest Inventory	<input checked="" type="checkbox"/> Ecological Restoration
Website:	MidwestForestryUnl.wix.com/forestry Facebook.com/MidwestForestryUnlimited	<input checked="" type="checkbox"/> Forest Valuation & Financial Analysis	<input checked="" type="checkbox"/> Environmental Planning & Assessments
Education:	B.S., Forestry (Recreation), Southern Illinois University, 2016.		
NRCS TSP:	Yes; USDA-NRCS Technical Service Provider, CAP-Forest Management Plan (106), CAP - Prescribed Burning Plan (112), TSP-16-20438		
Experience:	Our company has a combined 15 years of experience; Pesticide applicators license # CA 08555402		
Affiliations:	Society of American Foresters; Northwest Illinois Forestry Association; Illinois Forestry Association		
Insurance:	Commercial General Liability with Errors and Omissions		
Service Area:	Northern Illinois; Southern Wisconsin		

Name:	Adam Langer	PROFESSIONAL FORESTRY SERVICES	
Company:	Cutting Edge Forestry, LLC	<input type="checkbox"/> Appraisals: Trespass, Timber, and Forest land	<input type="checkbox"/> Biomass Marketing
Address:	21810 Old Farm Rd Deer Park, IL 60010	<input checked="" type="checkbox"/> Contractual Timber Work (TSI, crop tree release, pruning, etc.)	<input type="checkbox"/> Business Planning
Phone:	(815) 992-7372	<input type="checkbox"/> Contractual Tree Planting (labor, tree, etc.)	<input type="checkbox"/> Carbon Sequestration & Carbon Credits
Fax:	-----	<input type="checkbox"/> Expert Testimony & Litigation	<input type="checkbox"/> Christmas Tree Management
Email:	adam.langer@cuttingedgeforestry.com	<input checked="" type="checkbox"/> Forest Management Plans & Forest inventory	<input checked="" type="checkbox"/> Conservation Stewardship Plans
Website:	www.cuttingedgeforestry.com	<input type="checkbox"/> Forest Valuation & Financial Analysis	<input checked="" type="checkbox"/> Ecological Restoration
Education:	B.S., Forest Science, University of Illinois, 2005.	<input type="checkbox"/> GPS & GIS Mapping Services	<input type="checkbox"/> Environmental Planning & Assessments
Experience:	Consulting forester since 2006; Municipal arborist 5+ years; USDA Forest Service timber sale preparation 1 year; University of Illinois assistant naturalist 1 year; University of Illinois forestry research 1 year; Tallgrass Environmental Restoration technician/foreman 2 years; National WildFire Coordinating Group Wildland Firefighter training.	<input checked="" type="checkbox"/> Herbicide Application & Recommendations	<input checked="" type="checkbox"/> Habitat Establishment (food plots, grasses)
Professional Affiliations:	Society of American Foresters; International Society of Arboriculture; Illinois Consulting Foresters Assoc.; Emerald Ash Borer Wood Utilization Team; Illinois Pesticide Applicators License.	<input type="checkbox"/> Invasive Species Control / Removal	<input type="checkbox"/> Insect & Disease Evaluation
Insurance Coverage:	Available upon request	<input type="checkbox"/> Prescribed Fire & Controlled Burn Plans	<input type="checkbox"/> Recreation Planning & Development
Service Area:	Northern Illinois	<input type="checkbox"/> Timber Cost Basis & Taxation	<input checked="" type="checkbox"/> Urban Forestry / Arboriculture
		<input type="checkbox"/> Timber Sale Administration & Marketing	<input checked="" type="checkbox"/> Wildlife Management

Name:	Brent Lecher	PROFESSIONAL FORESTRY SERVICES	
Company:	Wolf Creek Management LLC	<input type="checkbox"/> Appraisals: Trespass, Timber, and Forest land	<input type="checkbox"/> Biomass Marketing
Address:	PO Box 183 Eddyville, IL 62928	<input type="checkbox"/> Contractual Timber Work (TSI, crop tree release, pruning, etc.)	<input type="checkbox"/> Business Planning
Phone:	(618) 499-1362	<input type="checkbox"/> Contractual Tree Planting (labor, tree, etc.)	<input type="checkbox"/> Carbon Sequestration & Carbon Credits
Fax:	(618) 672-5103	<input type="checkbox"/> Expert Testimony & Litigation	<input type="checkbox"/> Christmas Tree Management
Email:	brent_lecher@yahoo.com	<input checked="" type="checkbox"/> Forest Management Plans & Forest inventory	<input checked="" type="checkbox"/> Conservation Stewardship Plans
Website:	-----	<input type="checkbox"/> Forest Valuation & Financial Analysis	<input type="checkbox"/> Ecological Restoration
Education:	B.S., Forestry (minor: Wildlife Management), Purdue University, 1994.	<input type="checkbox"/> GPS & GIS Mapping Services	<input type="checkbox"/> Environmental Planning & Assessments
Experience:	Forester with Tennessee Division of Forestry 7+ years; Forest Inventory, Utility Forester, ECI Inc., 8 years.	<input type="checkbox"/> Herbicide Application & Recommendations	<input checked="" type="checkbox"/> Habitat Establishment (food plots, grasses, etc.)
Affiliations:	Society of American Foresters and Illinois Consulting Foresters Association	<input type="checkbox"/> Invasive Species Control / Removal	<input type="checkbox"/> Insect & Disease Evaluation
Insurance:	Available upon request	<input type="checkbox"/> Prescribed Fire & Controlled Burn Plans	<input type="checkbox"/> Recreation Planning & Development
Service Area:	Southern Illinois; Western Kentucky, and Southwestern Indiana.	<input type="checkbox"/> Timber Cost Basis & Taxation	<input type="checkbox"/> Urban Forestry / Arboriculture
		<input checked="" type="checkbox"/> Timber Sale Administration & Marketing	<input checked="" type="checkbox"/> Wildlife Management

Name:	Jeremiah Lemmons	PROFESSIONAL FORESTRY SERVICES	
Company:	-----	<input checked="" type="checkbox"/> Appraisals: Trespass, Timber, and Forest land	<input type="checkbox"/> Biomass Marketing
Address:	5443 Lagoon CT APT B Terre Haute, IN 47803-4274	<input checked="" type="checkbox"/> Contractual Timber Work (TSI, crop tree release, pruning, etc.)	<input type="checkbox"/> Business Planning
Phone:	(812) 528-1446	<input type="checkbox"/> Contractual Tree Planting (labor, tree, etc.)	<input type="checkbox"/> Carbon Sequestration & Carbon Credits
Fax:	-----	<input type="checkbox"/> Expert Testimony & Litigation	<input type="checkbox"/> Christmas Tree Management
Email:	jlemmons67@hotmail.com	<input checked="" type="checkbox"/> Forest Management Plans & Forest Inventory	<input checked="" type="checkbox"/> Conservation Stewardship Plans
Website:	-----	<input checked="" type="checkbox"/> Forest Valuation & Financial Analysis	<input type="checkbox"/> Ecological Restoration
Education:	B.S., Forestry and Wildlife Management, Purdue University, 1999.		
USDA TSP:	Yes; USDA-NRCS Technical Service Provider, CAP-Forest Management Plan (106), TSP-10-6653		
Experience:	Indiana DNR District Forester 8 years; Assistant Manager Jackson-Washington State Forest 1.5 yrs; Forester Assistant Purdue University 1 yr; Timber Tech IDNR Division of Forestry 2 summers; and Certified Tree Farm Inspector #18336		
Professional Affiliations:	American Tree Farm System and Sycamore Trails RC&D		
Insurance Coverage:	General Liability, Workers Compensation		
Service Area:	All of Illinois		

Name:	Blake Lilly	PROFESSIONAL FORESTRY SERVICES	
Company:	Lilly Timber Services, Inc.	<input type="checkbox"/> Appraisals: Trespass, Timber, and Forest land	<input type="checkbox"/> Biomass Marketing
Address:	RR 1 Box 179 Mode, IL 62444	<input checked="" type="checkbox"/> Contractual Timber Work (TSI, crop tree release, pruning, etc.)	<input type="checkbox"/> Business Planning
Phone:	(217) 821-9717	<input checked="" type="checkbox"/> Contractual Tree Planting (labor, tree, etc.)	<input type="checkbox"/> Carbon Sequestration & Carbon credits
Fax:	(217) 774-5796	<input type="checkbox"/> Expert Testimony & Litigation	<input type="checkbox"/> Christmas Tree Management
Email:	LillyTimberService@yahoo.com	<input checked="" type="checkbox"/> Forest Management Plans & Forest Inventory	<input checked="" type="checkbox"/> Conservation Stewardship Plans
Website:	-----	<input type="checkbox"/> Forest Valuation & Financial Analysis	<input checked="" type="checkbox"/> Ecological Restoration
Education:	B.S., Forest Resource Management, Southern Illinois University, 2013.		
NRCS TSP:	Yes; USDA-NRCS Technical Service Provider, CAP-Forest Management Plan (106), TSP-13-9375		
Experience:	Contractual and consulting forestry services since 2008; Illinois Commercial Pesticide Applicator: treated over 14,000 acres of invasive and exotic species.		
Insurance:	General Liability; Workers Comp; Commercial Vehicle		
Service Area:	All of Illinois		

Name:	Mike Long	PROFESSIONAL FORESTRY SERVICES	
Company:	Long Forestry Consultation	<input checked="" type="checkbox"/> Appraisals: Trespass, Timber, and Forest land	<input type="checkbox"/> Biomass Marketing
Address:	2220 Spanish Bluff Rd Anna, IL 62906	<input checked="" type="checkbox"/> Contractual Timber Work (TSI, crop tree release, pruning, etc.)	<input type="checkbox"/> Business Planning
Phone:	Office: (618) 893-2307 Mobile: (618) 203-4248	<input checked="" type="checkbox"/> Contractual Tree Planting (labor, tree, etc.)	<input type="checkbox"/> Carbon Sequestration & Carbon Credits
Fax:	-----	<input type="checkbox"/> Expert Testimony & Litigation	<input type="checkbox"/> Christmas Tree Management
Email:	mike@longforestry.com	<input checked="" type="checkbox"/> Forest Management Plans & Forest Inventory	<input checked="" type="checkbox"/> Conservation Stewardship Plans
Website:	www.longforestry.com	<input checked="" type="checkbox"/> Forest Valuation & Financial Analysis	<input checked="" type="checkbox"/> Ecological Restoration
Education:	M.S., Forest Resource Management, Southern Illinois University, 2008. B.S., Forest Recreation, Southern Illinois University, 2001.		
NRCS TSP:	Yes; USDA-NRCS Technical Service Provider, CAP-Forest Management Plan (106), Prescribed Burning, Agroforestry, Wildlife; TSP-07-5882		
Experience:	Consulting forester since 2005; IL Certified Prescribed Burn Manager CPBM #10-087; USDA Forest Service forest technician 2003-2005; Chestnut Ridge Forestry forest technician 2001-2003; Commercial Pesticide Applicators License #07710282; Certified Commercial Applicator Missouri #C17190; SAF Certified Forester #129255; and Certified Tree Farm Inspector #147121.		
Staff Foresters:	Brandon Beal: B.S., Forest Management, Southern Illinois University, 2010. Chris Long: MBA, Southern Illinois University, 2013.		
Professional Affiliations:	Society of American Foresters; Illinois Consulting Foresters, Inc.; Walnut Council; Illinois Forestry Association; International Society of Arboriculture.		
Insurance Coverage:	\$2 million Forestry Services Policy for prescribed burning, timber stand improvement, and herbicide Applications.		
Service Area:	Illinois and Tri-State Area		

Name:	Kirk Massie	PROFESSIONAL FORESTRY SERVICES	
Company:	Illinois Forest Products	<input checked="" type="checkbox"/> Appraisals: Trespass, Timber, and Forest land	<input checked="" type="checkbox"/> Biomass Marketing
Address:	8699 Arenzville Rd Beardstown, IL 62618	<input checked="" type="checkbox"/> Contractual Timber Work (TSI, crop tree release, pruning, etc.)	<input type="checkbox"/> Business Planning
Phone:	(217) 323-4540	<input checked="" type="checkbox"/> Contractual Tree Planting (labor, tree, etc.)	<input checked="" type="checkbox"/> Carbon Sequestration & Carbon credits
Fax:	(217) 323-9468	<input checked="" type="checkbox"/> Expert Testimony & Litigation	<input checked="" type="checkbox"/> Conservation Stewardship Plans
Email:	ifp@casscomm.com	<input checked="" type="checkbox"/> Forest Management Plans & Forest inventory	<input type="checkbox"/> Ecological Restoration
Website:	www.IllinoisForestProducts.com	<input checked="" type="checkbox"/> Forest Valuation & Financial analysis	<input type="checkbox"/> Environmental Planning & Assessments
Education:	B.S., Forestry, Southern Illinois University, 2007.		
Experience:	Professional forestry services since 1961; we also offer Forestry Mulching and Utility Clearance services.		
Staff Foresters:	Kevin Massie: B.S., Ornamental Horticulture, University of Illinois, 1975. A.S., Forestry & Business, University of Illinois, 1975. Kirk Massie: B.S., Forestry, Southern Illinois University Carbondale, 2007. Tom Bransom: B.S., Forestry, Southern Illinois University Carbondale, 2010.		
Professional Affiliations:	Illinois Green Association		
Insurance Coverage:	Fully Covered: Liability & Workers Comp.		
Service Area:	All of Illinois		

Name:	Shawna Meyer	PROFESSIONAL FORESTRY SERVICES	
Company:	Natural Resource Insight	<input checked="" type="checkbox"/> Appraisals: Trespass, Timber, and Forest land	<input type="checkbox"/> Biomass Marketing
Address:	934 Thomas St. SE, No. 1 Grand Rapids, MI 49506	<input type="checkbox"/> Contractual Timber Work (TSI, crop tree release, pruning, etc.)	<input checked="" type="checkbox"/> Business Planning
Phone:	(517) 388-6954	<input type="checkbox"/> Contractual Tree Planting (labor, tree, etc.)	<input type="checkbox"/> Carbon Sequestration & Carbon credits
Fax:	-----	<input checked="" type="checkbox"/> Expert Testimony & Litigation	<input checked="" type="checkbox"/> Conservation Stewardship Plans
Email:	shawnameyer1@gmail.com	<input checked="" type="checkbox"/> Forest Management Plans & Forest inventory	<input type="checkbox"/> Ecological Restoration
Website:	www.NaturalResourceInsight.com	<input checked="" type="checkbox"/> Forest Valuation & Financial analysis	<input type="checkbox"/> Environmental Planning & Assessments
Education:	M.S., Forest Biometry, Michigan State University, 2005. M.S., Forest Ecology, Purdue University, 2001. B.S., Forestry / Wildlife Management, Purdue University, 1998.	<input type="checkbox"/> GPS & GIS Mapping Services	<input type="checkbox"/> Habitat Establishment (food plots, grasses, etc.)
Experience:	20+ years working in forestry. Specialized in private forestry. Former administrator of Michigan's private forestland programs.	<input type="checkbox"/> Herbicide Application & Recommendations	<input checked="" type="checkbox"/> Insect & Disease Evaluation
Professional Affiliations:	Society of American Foresters	<input type="checkbox"/> Invasive Species Control / Removal	<input checked="" type="checkbox"/> Recreation Planning & Development
Insurance Coverage:	Yes	<input type="checkbox"/> Prescribed Fire & Controlled burn Plans	<input type="checkbox"/> Urban Forestry / Arboriculture
Service Area:	Northern Illinois; Northern Indiana; Michigan's Lower Peninsula	<input type="checkbox"/> Timber Cost Basis & Taxation	<input checked="" type="checkbox"/> Wildlife Management
		<input checked="" type="checkbox"/> Timber Sale Administration & Marketing	<input checked="" type="checkbox"/> Other: Christmas Tree Management

Name:	Lee Mitchell	PROFESSIONAL FORESTRY SERVICES	
Company:	Prairie State Wildlife Services	<input type="checkbox"/> Appraisals: Trespass, Timber, and Forest land	<input type="checkbox"/> Biomass Marketing
Address:	RR 4 Box 181 Shelbyville, IL 62565	<input type="checkbox"/> Contractual Timber Work (TSI, crop tree release, pruning, etc.)	<input type="checkbox"/> Business Planning
Phone:	(217) 827-6513	<input type="checkbox"/> Contractual Tree Planting (labor, tree, etc.)	<input type="checkbox"/> Carbon Sequestration & Carbon Credits
Fax:	-----	<input type="checkbox"/> Expert Testimony & Litigation	<input type="checkbox"/> Christmas Tree Management
Email:	leemitchell@yahoo.com	<input checked="" type="checkbox"/> Forest Management Plans & Forest Inventory	<input checked="" type="checkbox"/> Conservation Stewardship Plans
Website:	www.ILWildlifeServices.com	<input type="checkbox"/> Forest Valuation & Financial Analysis	<input type="checkbox"/> Ecological Restoration
Education:	M.S., Biology, Georgia Southern University, 1998. B.S., Forestry, Stephen F. Austin State University, 1994.	<input checked="" type="checkbox"/> GPS & GIS Mapping Services	<input type="checkbox"/> Environmental Planning & Assessments
NRCS TSP:	Yes; USDA-NRCS Technical Service Provider, CAP-Forest Management Plan (106), TSP-10-6515	<input type="checkbox"/> Herbicide Application & Recommendations	<input type="checkbox"/> Habitat Establishment (food plots, grasses, etc.)
Experience:	16+ years Wildlife and Forest Management Experience	<input type="checkbox"/> Invasive Species Control / Removal	<input type="checkbox"/> Insect & Disease Evaluation
Professional Affiliations:	The Wildlife Society	<input type="checkbox"/> Prescribed Fire & Controlled Burn Plans	<input type="checkbox"/> Recreation Planning & Development
Service Area:	Central Illinois	<input type="checkbox"/> Timber Cost Basis & Taxation	<input type="checkbox"/> Urban Forestry / Arboriculture
		<input type="checkbox"/> Timber Sale Administration & Marketing	<input checked="" type="checkbox"/> Wildlife Management

Name:	Justin Mount	PROFESSIONAL FORESTRY SERVICES	
Company:	JNJ Reforestation	<input type="checkbox"/> Appraisals: Trespass, Timber, and Forest land	<input type="checkbox"/> Biomass Marketing
Address:	2240 Crescent Loop Vienna, IL 62995	<input checked="" type="checkbox"/> Contractual Timber Work (TSI, crop tree release, pruning, etc.)	<input type="checkbox"/> Business Planning
Phone:	(618) 534-9582	<input checked="" type="checkbox"/> Contractual Tree Planting (labor, tree, etc.)	<input type="checkbox"/> Carbon Sequestration & Carbon Credits
Fax:	-----	<input type="checkbox"/> Expert Testimony & Litigation	<input type="checkbox"/> Christmas Tree Management
Email:	jmount619@hotmail.com	<input checked="" type="checkbox"/> Forest Management Plans & Forest Inventory	<input checked="" type="checkbox"/> Conservation Stewardship Plans
Website:	-----	<input type="checkbox"/> Forest Valuation & Financial Analysis	<input type="checkbox"/> Ecological Restoration
Education:	M.S., Forestry, Southern Illinois University, 2003. B.S., Plant & Soil Science, University of Tennessee-Knoxville, 1997.	<input checked="" type="checkbox"/> GPS & GIS Mapping Services	<input type="checkbox"/> Environmental Planning & Assessments
Experience:	Consulting forester since 1998; mechanical reforestation with vegetation control; forest resource management plans; wildlife evaluations; mapping; GPS work; and forest stand improvement.	<input checked="" type="checkbox"/> Herbicide Application & Recommendations	<input checked="" type="checkbox"/> Habitat Establishment (food plots, grasses, etc.)
Insurance Coverage:	Yes	<input type="checkbox"/> Invasive Species Control / Removal	<input type="checkbox"/> Insect & Disease Evaluation
Service Area:	Southern Illinois	<input type="checkbox"/> Prescribed Fire & Controlled Burn Plans	<input type="checkbox"/> Recreation Planning & Development
		<input type="checkbox"/> Timber Cost Basis & Taxation	<input type="checkbox"/> Urban Forestry / Arboriculture
		<input type="checkbox"/> Timber Sale Administration & Marketing	<input checked="" type="checkbox"/> Wildlife Management

Name:	Lee Mueller	PROFESSIONAL FORESTRY SERVICES	
Company:	Davey Resource Group	<input checked="" type="checkbox"/> Appraisals: Trespass, Timber, and Forest land	<input type="checkbox"/> Biomass Marketing
Address:	700 McHenry Ave Woodstock, IL 60098	<input checked="" type="checkbox"/> Contractual Timber Work (TSI, crop tree release, pruning, etc.)	<input checked="" type="checkbox"/> Business Planning
Phone:	(248) 221-0439	<input checked="" type="checkbox"/> Contractual Tree Planting (labor, trees, etc.)	<input checked="" type="checkbox"/> Carbon Sequestration & Carbon credits
Fax:	-----	<input checked="" type="checkbox"/> Expert Testimony & Litigation	<input type="checkbox"/> Christmas Tree Management
Email:	Lee.Mueller@Davey.com	<input checked="" type="checkbox"/> Forest Management Plans & Forest Inventory	<input checked="" type="checkbox"/> Conservation Stewardship Plans
Website:	www.davey.com/drg	<input checked="" type="checkbox"/> Forest Valuation & Financial Analysis	<input checked="" type="checkbox"/> Ecological Restoration
Education:	M.S., Forestry, Michigan State University, 2011. B.S., Forestry, Michigan State University, 2009.		
Experience:	Lee Mueller has provided consulting in traditional and urban forestry since 2009. Davey Resource Group, a division of The Davey Tree Expert Company (founded 1880) employs numerous experts and has provided innovative natural resource solutions to individuals, institutions, municipalities, and businesses since 1992.		
Affiliations:	Society of American Foresters, International Society of Arboriculture, American Tree Farm System, Society of Municipal Arborists		
Insurance:	Commercial General Liability Insurance (\$2,000,000), Errors and omissions (\$5,000,000), and Workman's compensation.		
Service Area:	Illinois and surrounding states.		

Name:	Joe L. Newcomb, CF®	PROFESSIONAL FORESTRY SERVICES	
Company:	Newcomb Forestry Services	<input checked="" type="checkbox"/> Appraisals: Trespass, Timber, and Forest land	<input type="checkbox"/> Biomass Marketing
Address:	585 Co. Rd. 1050 E. Norris City, IL 62869	<input type="checkbox"/> Contractual Timber Work (TSI, crop tree release, pruning, etc.)	<input type="checkbox"/> Business Planning
Phone:	(618) 265-3286	<input type="checkbox"/> Contractual Tree Planting (labor, tree, etc.)	<input type="checkbox"/> Carbon Sequestration & Carbon Credits
Fax:	(618) 265-3286	<input type="checkbox"/> Expert Testimony & Litigation	<input type="checkbox"/> Christmas Tree Management
Email:	newcomb.joe@gmail.com	<input checked="" type="checkbox"/> Forest Management Plans & Forest inventory	<input checked="" type="checkbox"/> Conservation Stewardship Plans
Website:	-----	<input type="checkbox"/> Forest Valuation & Financial Analysis	<input type="checkbox"/> Ecological Restoration
Education:	B.S., Forest Production, University of Illinois, 1962.		
Experience:	Consulting forester since 1994; Forester w/ USDA Forest Service for 30+ years; Society of American Foresters <i>Certified Forester</i> ®.		
Professional Affiliations:	Society of American Foresters; Illinois chapter of Society of American Foresters past secretary and treasurer; Illinois Consulting Foresters, Inc.; Illinois Forestry Association; and Illinois Forestry Association regional director.		
Service Area:	Southeastern Illinois		

Name:	Kevin Oetken	PROFESSIONAL FORESTRY SERVICES	
Company:	Woodland Forestry Consulting	<input checked="" type="checkbox"/> Appraisals: Trespass, Timber, and Forest land	<input type="checkbox"/> Biomass Marketing
Address:	10571 18 th Avenue Monmouth, IA 52309	<input checked="" type="checkbox"/> Contractual Timber Work (TSI, crop tree release, pruning, etc.)	<input checked="" type="checkbox"/> Business Planning
Phone:	(563) 673-2146	<input checked="" type="checkbox"/> Contractual Tree Planting (labor, tree, etc.)	<input type="checkbox"/> Carbon Sequestration & Carbon Credits
Fax:	(563) 673-2147	<input checked="" type="checkbox"/> Expert Testimony & Litigation	<input checked="" type="checkbox"/> Christmas Tree Management
Email:	loetken@netins.net	<input checked="" type="checkbox"/> Forest Management Plans & Forest Inventory	<input checked="" type="checkbox"/> Conservation Stewardship Plans
Website:	-----	<input checked="" type="checkbox"/> Forest Valuation & Financial Analysis	<input checked="" type="checkbox"/> Ecological Restoration
Education:	B.S., Forestry, Iowa State University, 1989.		
NRCS TSP:	Yes; USDA-NRCS Technical Service Provider, CAP-Forest Management Plan (106), TSP-03-3378		
Experience:	Owner of Woodland Forestry LLC since 1991; County forester 1989-1991		
Staff Foresters:	Ed Szabo: B.S., Forestry, Iowa State University, 1999. Jason Plymmer: B.S., Wildlife, Iowa State University, 2002.		
Professional Affiliations:	Northwest Illinois Forestry Association and Iowa Woodland Owners Association		
Insurance Coverage:	Full workers comp, liability, and pesticide applicators licenses.		
Service Area:	North ½ of Illinois; Iowa; northern Missouri; southwest Wisconsin; and southern Minnesota		

Name:	Larry J. Owen	PROFESSIONAL FORESTRY SERVICES	
Company:	Forest Management Services, Inc.	<input checked="" type="checkbox"/> Appraisals: Trespass, Timber, and Forest land <input type="checkbox"/> Contractual Timber Work (TSI, crop tree release, pruning, etc.)	<input type="checkbox"/> Biomass Marketing <input type="checkbox"/> Business Planning
Address:	4595 N. Michigan St. Terre Haute, IN 47805	<input type="checkbox"/> Contractual Tree Planting (labor, tree, etc.) <input checked="" type="checkbox"/> Expert Testimony & Litigation	<input type="checkbox"/> Carbon Sequestration & Carbon Credits <input type="checkbox"/> Christmas Tree Management
Phone:	(812) 466-4445	<input checked="" type="checkbox"/> Forest Management Plans & Forest Inventory <input checked="" type="checkbox"/> Forest Valuation & Financial Analysis	<input checked="" type="checkbox"/> Conservation Stewardship Plans <input type="checkbox"/> Ecological Restoration
Fax:	-----	<input type="checkbox"/> GPS & GIS Mapping Services <input type="checkbox"/> Herbicide Application & Recommendations	<input checked="" type="checkbox"/> Environmental Planning & Assessments <input type="checkbox"/> Habitat Establishment (food plots, grasses, etc.)
Email:	larry@forest-management.com	<input type="checkbox"/> Invasive Species Control / Removal <input type="checkbox"/> Prescribed Fire & Controlled Burn Plans	<input type="checkbox"/> Insect & Disease Evaluation <input type="checkbox"/> Recreation Planning & Development
Website:	www.forest-management.com	<input checked="" type="checkbox"/> Timber Cost Basis & Taxation <input checked="" type="checkbox"/> Timber Sale Administration & Marketing	<input type="checkbox"/> Urban Forestry / Arboriculture <input type="checkbox"/> Wildlife Management
Education:	B.S., Forest Management, University of Illinois, 1968.		
Experience:	Indiana Dept. of Natural Resources, Division of Forestry, district forester 1968-1981; consulting forester since 1981; expert in hardwood reforestation – planted tree for over 25 years; extensive experience in the proper marking and Marketing of timber on behalf of landowners; I will mark timber stand improvement project for landowners to carry out for themselves and instruct in the proper methods; real estate license for a period of time; numerous continuing education conferences over the years.		
Professional Affiliations:	Association of Consulting Foresters; Society of American Foresters; Illinois Consulting Foresters, Inc. (co-founder); Indiana Woodland Owners Association; and Tree Farm Inspector.		
Insurance Coverage:	Professional and commercial general liability; workers compensation		
Service Area:	East-central Illinois; West-central Indiana		

Name:	Stephen Parker	PROFESSIONAL FORESTRY SERVICES	
Company:	Heartland Forestry	<input checked="" type="checkbox"/> Appraisals: Trespass, Timber, and Forest land <input checked="" type="checkbox"/> Contractual Timber Work (TSI, crop tree release, pruning, etc.)	<input type="checkbox"/> Biomass Marketing <input checked="" type="checkbox"/> Business Planning
Address:	124 S Sunnyside Rd Decatur, IL 62522	<input checked="" type="checkbox"/> Contractual Tree Planting (labor, tree, etc.) <input checked="" type="checkbox"/> Expert Testimony & Litigation	<input type="checkbox"/> Carbon Sequestration & Carbon Credits <input type="checkbox"/> Christmas Tree Management
Phone:	217-412-3363	<input checked="" type="checkbox"/> Forest Management Plans & Forest Inventory <input checked="" type="checkbox"/> Forest Valuation & Financial Analysis	<input checked="" type="checkbox"/> Conservation Stewardship Plans <input checked="" type="checkbox"/> Ecological Restoration
Fax:	-----	<input checked="" type="checkbox"/> GPS & GIS Mapping Services <input checked="" type="checkbox"/> Herbicide Application & Recommendations	<input checked="" type="checkbox"/> Environmental Planning & Assessments <input checked="" type="checkbox"/> Habitat Establishment (food plots, grasses, etc.)
Email:	swparkercig@hotmail.com	<input checked="" type="checkbox"/> Invasive Species Control / Removal <input type="checkbox"/> Prescribed Fire & Controlled Burn Plans	<input type="checkbox"/> Insects & Disease Evaluation <input checked="" type="checkbox"/> Recreation Planning & Development
Website:	-----	<input type="checkbox"/> Timber Cost Basis & Taxation <input checked="" type="checkbox"/> Timber Sale Administration & Marketing	<input type="checkbox"/> Urban Forestry / Arboriculture <input checked="" type="checkbox"/> Wildlife Management
Education:	M.S., Forest Science (Forestry & Wildlife Management), University of Arkansas - Monticello, 2005. B.S., Agricultural Sciences (Forestry), Minor in Zoology, Southern Illinois University, 2002.		
NRCS TSP:	No; However, approval available through Long Forestry Consultation		
Experience:	Heartland Forestry – Consulting Forester (owner), 5 yrs.; Univ of AR Mont-Research Assistant, 3.5 yrs.; US Army Corp of Engineers-wildlife Technician, 0.5 yrs.; DeWitt County Soil & Water Conservation District-Resource Conservationist 3.0 yrs.; Rocky Mountain Elk Foundation-committee member, 3.0 yrs.; Clinton Lake Watershed-committee member, 2.5 yrs.; SIUC Wildlife Research Center-Research Assistant, 0.5 yrs.; IL Commercial Pesticide Applicator License #CA11543329.		
Professional Affiliations:	Society of American Foresters		
Insurance Coverage:	General Liability; Error & Omissions (Erie Insurance)		
Service Area:	All of Illinois		

Name:	Robert Petrzelka	PROFESSIONAL FORESTRY SERVICES	
Company:	Geode Forestry, Inc.	<input checked="" type="checkbox"/> Appraisals: Trespass, Timber, and Forest land	<input type="checkbox"/> Biomass Marketing
Address:	P.O. Box 86 Swedesburg, IA 52652	<input checked="" type="checkbox"/> Contractual Timber Work (TSI, crop tree release, pruning, etc.)	<input type="checkbox"/> Business Planning
Phone:	(319) 254-2232	<input checked="" type="checkbox"/> Contractual Tree Planting (labor, tree, etc.)	<input type="checkbox"/> Carbon Sequestration & Carbon Credits
Fax:	(319) 254-2209	<input checked="" type="checkbox"/> Expert Testimony & Litigation	<input type="checkbox"/> Christmas Tree Management
Email:	bpivo1@gmail.com	<input checked="" type="checkbox"/> Forest Management Plans & Forest Inventory	<input checked="" type="checkbox"/> Conservation Stewardship Plans
Website:	www.GeodeForestry.com	<input checked="" type="checkbox"/> Forest Valuation & Financial Analysis	<input type="checkbox"/> Ecological Restoration
Education:	B.S., Forest Resource Management, Iowa State University, 1979.	<input type="checkbox"/> GPS & GIS Mapping Services	<input type="checkbox"/> Environmental Planning & Assessments
Experience:	Professional consulting forester since 1989; Certified Tree Farm Inspectors; and Indiana bat surveys.	<input type="checkbox"/> Herbicide Application & Recommendations	<input type="checkbox"/> Habitat Establishment (food plots, grasses, etc.)
Staff Foresters:	Gretchen Cline: B.S., Forest Resource Management, Iowa State University, 1997.	<input checked="" type="checkbox"/> Invasive Species Control / Removal	<input type="checkbox"/> Insect & Disease Evaluation
Professional Affiliations:	Society of American Foresters; Iowa Woodland Owners' Association; and American Tree Farm System	<input type="checkbox"/> Prescribed Fire & Controlled Burn Plans	<input type="checkbox"/> Recreation Planning & Development
Insurance Coverage:	General Liability, Workers Compensation, and Professional Liability.	<input checked="" type="checkbox"/> Timber Cost Basis & Taxation	<input type="checkbox"/> Urban Forestry / Arboriculture
Service Area:	West-central and northwest Illinois; Iowa	<input checked="" type="checkbox"/> Timber Sale Administration & Marketing	<input type="checkbox"/> Wildlife Management

Name:	George C. Poe	PROFESSIONAL FORESTRY SERVICES	
Company:	George Poe, Consultant Forester	<input checked="" type="checkbox"/> Appraisals: Trespass, Timber, and Forest land	<input type="checkbox"/> Biomass Marketing
Address:	5421 W. Lowell Park Rd Mt. Morris, IL 61054	<input type="checkbox"/> Contractual Timber Work (TSI, crop tree release, pruning, etc.)	<input type="checkbox"/> Business Planning
Phone:	(815) 734-4843	<input type="checkbox"/> Contractual Tree Planting (labor, tree, etc.)	<input type="checkbox"/> Carbon Sequestration & Carbon Credits
Fax:	-----	<input type="checkbox"/> Expert Testimony & Litigation	<input checked="" type="checkbox"/> Christmas Tree Management
Email:	gcpcpe@frontier.com	<input checked="" type="checkbox"/> Forest Management Plans & Forest Inventory	<input checked="" type="checkbox"/> Conservation Stewardship Plans
Website:	-----	<input type="checkbox"/> Forest Valuation & Financial Analysis	<input type="checkbox"/> Ecological Restoration
Education:	M.S., Forest Economics, University of Illinois, 1971. B.S., Forest Management, Southern Illinois University, 1969.	<input type="checkbox"/> GPS & GIS Mapping Services	<input type="checkbox"/> Environmental Planning & Assessments
Experience:	IL-DNR district forester 32 years; Proprietor of George Poe tree & Turf (includes evergreen nursery & Christmas Tree production) since 1980; Consulting forester since 2002.	<input type="checkbox"/> Herbicide Application & Recommendations	<input type="checkbox"/> Habitat Establishment (food plots, grasses, etc.)
Service Area:	Northern Illinois	<input type="checkbox"/> Invasive Species Control / Removal	<input checked="" type="checkbox"/> Insect & Disease Evaluation
		<input type="checkbox"/> Prescribed Fire & Controlled Burn Plans	<input type="checkbox"/> Recreation Planning & Development
		<input type="checkbox"/> Timber Cost Basis & Taxation	<input checked="" type="checkbox"/> Urban Forestry / Arboriculture
		<input checked="" type="checkbox"/> Timber Sale Administration & Marketing	<input type="checkbox"/> Wildlife Management

Name:	Thomas L. Pohl	PROFESSIONAL FORESTRY SERVICES	
Company:	-----	<input checked="" type="checkbox"/> Appraisals: Trespass, Timber, and Forest land	<input type="checkbox"/> Biomass Marketing
Address:	12473 N. 1920 Blvd. Mt. Carmel, IL 62863	<input checked="" type="checkbox"/> Contractual Timber Work (TSI, crop tree release, pruning, etc.)	<input type="checkbox"/> Business Planning
Phone:	Cell: (812) 887-9423 (618) 299-3012	<input checked="" type="checkbox"/> Contractual Tree Planting (labor, tree, etc.)	<input type="checkbox"/> Carbon Sequestration & Carbon Credits
Fax:	-----	<input checked="" type="checkbox"/> Expert Testimony & Litigation	<input type="checkbox"/> Christmas Tree Management
Email:	forester460@yahoo.com	<input checked="" type="checkbox"/> Forest Management Plans & Forest inventory	<input checked="" type="checkbox"/> Conservation Stewardship Plans
Website:	-----	<input checked="" type="checkbox"/> Forest Valuation & Financial analysis	<input type="checkbox"/> Ecological Restoration
Education:	B.S., Forest Ecosystem Management, Purdue University, 1997.	<input type="checkbox"/> GPS & GIS Mapping Services	<input type="checkbox"/> Environmental Planning & Assessments
NRCS TSP:	Yes; USDA-NRCS Technical Service Provider, CAP-Forest Management Plan (106), TSP-10-6918	<input checked="" type="checkbox"/> Herbicide Application & Recommendations	<input type="checkbox"/> Habitat Establishment (food plots, grasses, etc.)
Experience:	Worked as a service forester with the Kentucky Division of Forestry for 9 years; Worked as a private consulting forester since 2006; Illinois commercial pesticide applicator's license #CA18536412; Indiana commercial pesticide applicator's license #F224019.	<input checked="" type="checkbox"/> Invasive Species Control / Removal	<input type="checkbox"/> Insects & Disease Evaluation
Professional Affiliations:	Member of the Indiana Woodland Owners Association	<input type="checkbox"/> Prescribed Fire & Controlled burn Plans	<input type="checkbox"/> Recreation Planning & Development
Insurance Coverage:	Commercial General Liability Insurance	<input checked="" type="checkbox"/> Timber Cost Basis & Taxation	<input checked="" type="checkbox"/> Urban Forestry / Arboriculture
Service Area:	Southern Illinois; Southern Indiana; and Central and Western Kentucky	<input checked="" type="checkbox"/> Timber Sale Administration & Marketing	<input checked="" type="checkbox"/> Wildlife Management

Name:	James Potthoff	PROFESSIONAL FORESTRY SERVICES	
Company:	-----	<input type="checkbox"/> Appraisals: Trespass, Timber, and Forest land	<input type="checkbox"/> Biomass Marketing
Address:	31169 1700 N Avenue Spring Valley, IL 61362	<input type="checkbox"/> Contractual Timber Work (TSI, crop tree release, pruning, etc.)	<input type="checkbox"/> Business Planning
Phone:	(815) 228-4418	<input type="checkbox"/> Contractual Tree Planting (labor, tree, etc.)	<input type="checkbox"/> Carbon Sequestration & Carbon Credits
Fax:	-----	<input type="checkbox"/> Expert Testimony & Litigation	<input type="checkbox"/> Christmas Tree Management
Email:	potthoff.james@gmail.com	<input checked="" type="checkbox"/> Forest Management Plans & Forest Inventory	<input checked="" type="checkbox"/> Conservation Stewardship Plans
Website:	-----	<input type="checkbox"/> Forest Valuation & Financial Analysis	<input type="checkbox"/> Ecological Restoration
Education:	B.S., Forestry, Southern Illinois University, 2004.		
NRCS TSP:	Yes; USDA-NRCS Technical Service Provider, CAP-Forest Management Plan (106), TSP-10-6558		
Experience:	Consulting forester since 2007; forestry intern with IL-DNR 1 year.		
Service Area:	Northern and eastern Illinois		

Name:	Jeremy Pruden	PROFESSIONAL FORESTRY SERVICES	
Company:	Pruden Forestry Consulting	<input checked="" type="checkbox"/> Appraisals: Trespass, Timber, and Forest land	<input type="checkbox"/> Biomass Marketing
Address:	811 405 N Ave. Mt. Sterling, IL 62353	<input checked="" type="checkbox"/> Contractual Timber Work (TSI, crop tree release, pruning, etc.)	<input type="checkbox"/> Business Planning
Phone:	(217) 491-4246	<input type="checkbox"/> Contractual Tree Planting (labor, tree, etc.)	<input type="checkbox"/> Carbon Sequestration & Carbon Credits
Fax:	-----	<input type="checkbox"/> Expert Testimony & Litigation	<input type="checkbox"/> Christmas Tree Management
Email:	jlpruden@hotmail.com	<input checked="" type="checkbox"/> Forest Management Plans & Forest Inventory	<input checked="" type="checkbox"/> Conservation Stewardship Plans
Website:	-----	<input checked="" type="checkbox"/> Forest Valuation & Financial Analysis	<input type="checkbox"/> Ecological Restoration
Education:	B.S., Forestry, Southern Illinois University, 2005.		
NRCS TSP:	Yes; USDA-NRCS Technical Service Provider, CAP-Forest Management Plan (106), TSP-10-6510		
Experience:	Over 10 years in the field professionally.		
Affiliations:	IL Forestry Association, USDA-NRCS, and USDA-FSA		
Insurance Coverage:	General Liability		
Service Area:	West-central Illinois		

Name:	Mark Rathman	PROFESSIONAL FORESTRY SERVICES	
Company:	Illinois Forestry Consulting	<input checked="" type="checkbox"/> Appraisals: Trespass, Timber, and Forest land	<input type="checkbox"/> Biomass Marketing
Address:	4414 S. McCormick Rd. Farmington, IL 61531-9390	<input checked="" type="checkbox"/> Contractual Timber Work (TSI, crop tree release, pruning, etc.)	<input type="checkbox"/> Business Planning
Phone:	(309) 245-0126	<input checked="" type="checkbox"/> Contractual Tree Planting (labor, tree, etc.)	<input type="checkbox"/> Carbon Sequestration & Carbon Credits
Fax:	-----	<input type="checkbox"/> Expert Testimony & Litigation	<input type="checkbox"/> Christmas Tree Management
Email:	rathman@core.com	<input checked="" type="checkbox"/> Forest Management Plans & Forest Inventory	<input checked="" type="checkbox"/> Conservation Stewardship Plans
Website:	-----	<input checked="" type="checkbox"/> Forest Valuation & Financial Analysis	<input type="checkbox"/> Ecological Restoration
Education:	B.S., Forestry, Iowa State University, 1988. B.S., Fisheries & Wildlife Biology, Iowa State University, 1988.		
NRCS TSP:	Yes; USDA-NRCS Technical Service Provider, CAP-Forest Management Plan (106), TSP-09-6375		
Experience:	Forestry consultant since 1989 where I have been involved in timber stand improvement; Tree Planting; timber Sale Administration and Marketing; timber appraisals; forest Management Planning and inventory; and forestry-related herbicide Applications.		
Insurance Coverage:	General Liability		
Service Area:	All of Illinois		

Name:	William D. Riggle		PROFESSIONAL FORESTRY SERVICES	
Company:	Riggle Forestry	<input checked="" type="checkbox"/> Appraisals: Trespass, Timber, and Forest land	<input type="checkbox"/> Biomass Marketing	
Address:	11412 Northview Dr. Dexter, MO 63841	<input checked="" type="checkbox"/> Contractual Timber Work (TSI, crop tree release, pruning, etc.)	<input type="checkbox"/> Business Planning	
Phone:	(573) 624-9303	<input checked="" type="checkbox"/> Contractual Tree Planting (labor, tree, etc.)	<input type="checkbox"/> Carbon Sequestration & Carbon Credits	
Fax:	-----	<input checked="" type="checkbox"/> Expert Testimony & Litigation	<input type="checkbox"/> Christmas Tree Management	
Email:	driggle@newwavecomm.net	<input checked="" type="checkbox"/> Forest Management Plans & Forest Inventory	<input checked="" type="checkbox"/> Conservation Stewardship Plans	
Website:	-----	<input checked="" type="checkbox"/> Forest Valuation & Financial Analysis	<input checked="" type="checkbox"/> Ecological Restoration	
Education:	B.S., Natural Resource Management, University of Wisconsin – Stevens Point, 1977. B.S., Forest Management, University of Wisconsin – Stevens Point, 1975.		<input checked="" type="checkbox"/> Environmental Planning & Assessments	
NRCS TSP:	Yes; USDA-NRCS Technical Service Provider, CAP-Forest Management Plan (106), TSP-11-7025		<input type="checkbox"/> Habitat Establishment (food plots, grasses, etc.)	
Experience:	Retired from USDA Forest Service (31 years); professional consulting forester and sub-contractor/contractor on USDA Forest Service contracts since 2005; all phases of timber Management and human resource Management.			
Professional Affiliations:	Society of American Foresters (SAF); and Missouri Consulting Foresters			
Service Area:	Illinois; Missouri; Arkansas; Indiana; Ohio; Minnesota; Wisconsin; and work on US National Forest lands throughout the US.			

Name:	Andy Robison		PROFESSIONAL FORESTRY SERVICES	
Company:	-----	<input checked="" type="checkbox"/> Appraisals: Trespass, Timber, and Forest land	<input type="checkbox"/> Biomass Marketing	
Address:	8378 Locust Rd. Delavan, IL 61734	<input checked="" type="checkbox"/> Contractual Timber Work (TSI, crop tree release, pruning, etc.)	<input type="checkbox"/> Business Planning	
Phone:	(309) 224-0379	<input checked="" type="checkbox"/> Contractual Tree Planting (labor, tree, etc.)	<input type="checkbox"/> Carbon Sequestration & Carbon Credits	
Fax:	-----	<input checked="" type="checkbox"/> Expert Testimony & Litigation	<input type="checkbox"/> Christmas Tree Management	
Email:	akrobison45@yahoo.com	<input checked="" type="checkbox"/> Forest Management Plans & Forest Inventory	<input checked="" type="checkbox"/> Conservation Stewardship Plans	
Website:	-----	<input checked="" type="checkbox"/> Forest Valuation & Financial Analysis	<input type="checkbox"/> Ecological Restoration	
Education:	B.S., Forestry, Southern Illinois University, 1999.		<input type="checkbox"/> Environmental Planning & Assessments	
Experience:	17 years professional forestry experience			
Insurance Coverage:	Yes; contact me directly for more information			
Service Area:	Central Illinois			

Name:	Paul L. Roth		PROFESSIONAL FORESTRY SERVICES	
Company:	Tree For You	<input checked="" type="checkbox"/> Appraisals: Trespass, Timber, and Forest land	<input type="checkbox"/> Biomass Marketing	
Address:	9452 Old Highway 13 Murphysboro, IL 62966-5515	<input checked="" type="checkbox"/> Contractual Timber Work (TSI, crop tree release, pruning, etc.)	<input type="checkbox"/> Business Planning	
Phone:	(618) 684-2105	<input checked="" type="checkbox"/> Contractual Tree Planting (labor, tree, etc.)	<input type="checkbox"/> Carbon Sequestration & Carbon Credits	
Fax:	-----	<input checked="" type="checkbox"/> Expert Testimony & Litigation	<input checked="" type="checkbox"/> Christmas Tree Management	
Email:	-----	<input checked="" type="checkbox"/> Forest Management Plans & Forest Inventory	<input checked="" type="checkbox"/> Conservation Stewardship Plans	
Website:	-----	<input checked="" type="checkbox"/> Forest Valuation & Financial Analysis	<input checked="" type="checkbox"/> Ecological Restoration	
Education:	Ph.D., Forest Ecology, Kansas State University, 1967. M.S., Forest Management, Purdue, 1955. B.S., Forest Production, Purdue, 1951.		<input checked="" type="checkbox"/> Environmental Planning & Assessments	
Experience:	50+ years: Consulting; Expert witness; Professor; Certified Tree Farm Inspector; Insured arborist, etc.			
Professional Affiliations:	Society of American Foresters (Fellow); National Walnut Council (IN, IL, MO); Illinois Forestry Association; Illinois Nut Growers Association; Illinois Consulting Foresters, Inc.; etc.			
Insurance Coverage:	Liability			
Service Area:	All of Illinois and adjacent states; occasionally will service areas outside aforementioned service area.			

Name:	John Shannon	PROFESSIONAL FORESTRY SERVICES	
Company:	Tallgrass Restoration, LLC	<input type="checkbox"/> Appraisals: Trespass, Timber, and Forest land	<input type="checkbox"/> Biomass Marketing
Address:	2221 Hammond Dr. Schaumburg, IL 60173	<input type="checkbox"/> Contractual Timber Work (TSI, crop tree release, pruning, etc.)	<input type="checkbox"/> Business Planning
Phone:	(847) 925-9830	<input type="checkbox"/> Contractual Tree Planting (labor, tree, etc.)	<input type="checkbox"/> Carbon Sequestration & Carbon Credits
Fax:	(847) 925-9840	<input type="checkbox"/> Expert Testimony & Litigation	<input type="checkbox"/> Christmas Tree Management
Email:	jshannon@TallgrassRestoration.com	<input type="checkbox"/> Forest Management Plans & Forest inventory	<input checked="" type="checkbox"/> Conservation Stewardship Plans
Website:	www.TallgrassRestoration.com	<input type="checkbox"/> Forest Valuation & Financial Analysis	<input checked="" type="checkbox"/> Ecological Restoration
Education:	B.S., Forest Management, Colorado State University, 2008.	<input checked="" type="checkbox"/> GPS & GIS Mapping Services	<input type="checkbox"/> Environmental Planning & Assessments
Experience:	Currently Ecological Restoration Field Manager; Ecological Restoration foreman 2008-2012; Illinois Certified Prescribed Burn Manager; NWCG S-130/S-190 Wildland Fire Certs.; IL Commercial Pesticide Applicators License #CA03118747	<input type="checkbox"/> Herbicide Application & Recommendations	<input type="checkbox"/> Habitat Establishment (food plots, grasses)
Insurance Coverage:	Travelers Insurance General Liability, Umbrella, Auto and Work Comp	<input checked="" type="checkbox"/> Invasive Species Control / Removal	<input type="checkbox"/> Insects & Disease Evaluation
Service Area:	Illinois; southern Wisconsin	<input checked="" type="checkbox"/> Prescribed Fire & Controlled burn Plans	<input type="checkbox"/> Recreation Planning & Development
		<input type="checkbox"/> Timber Cost Basis & Taxation	<input type="checkbox"/> Urban Forestry / Arboriculture
		<input type="checkbox"/> Timber Sale Administration & Marketing	<input type="checkbox"/> Wildlife Management

Name:	John P. Stambaugh, CF®	PROFESSIONAL FORESTRY SERVICES	
Company:	Stambaugh Forestry	<input checked="" type="checkbox"/> Appraisals: Trespass, Timber, and Forest land	<input type="checkbox"/> Biomass Marketing
Address:	12817 E. SR 54 Springville, IN 47462	<input checked="" type="checkbox"/> Contractual Timber Work (TSI, crop tree release, pruning, etc.)	<input type="checkbox"/> Business Planning
Phone:	(812) 863-7272 (812) 863-7271	<input checked="" type="checkbox"/> Contractual Tree Planting (labor, tree, etc.)	<input checked="" type="checkbox"/> Carbon Sequestration & Carbon Credits
Fax:	(812) 863-7272	<input type="checkbox"/> Expert Testimony & Litigation	<input checked="" type="checkbox"/> Christmas Tree Management
Email:	forester@custom.net	<input checked="" type="checkbox"/> Forest Management Plans & Forest Inventory	<input checked="" type="checkbox"/> Conservation Stewardship Plans
Website:	-----	<input type="checkbox"/> Forest Valuation & Financial Analysis	<input type="checkbox"/> Ecological Restoration
Education:	B.S., Forest Management, Purdue University, 1986.	<input checked="" type="checkbox"/> GPS & GIS Mapping Services	<input type="checkbox"/> Environmental Planning & Assessments
Experience:	Society of American Foresters Certified Forester #80; Certified Tree Farm Inspector #5562; Consulting forester 16 years; Staff forester for private landowner 5 years; Assoc. of Consulting Foresters 5 years; Pesticide Applicator #207070; Portable sawmill owner/operator since 1987.	<input checked="" type="checkbox"/> Herbicide Application & Recommendations	<input type="checkbox"/> Habitat Establishment (food plots, grasses, etc.)
Professional Affiliations:	Society of American Foresters; Association of Consulting Foresters; Woodland Steward Institute; Indiana Tree Farm Committee; American Tree Farm System; and Indiana Forestry and Woodland Owners Association.	<input checked="" type="checkbox"/> Invasive Species Control / Removal	<input type="checkbox"/> Insect & Disease Evaluation
Insurance Coverage:	General Liability (Forest Landowners Ins.)	<input type="checkbox"/> Prescribed Fire & Controlled Burn Plans	<input type="checkbox"/> Recreation Planning & Development
Service Area:	Southeast and east-central Illinois; Southwest and west-central Indiana	<input checked="" type="checkbox"/> Timber Cost Basis & Taxation	<input type="checkbox"/> Urban Forestry / Arboriculture
		<input checked="" type="checkbox"/> Timber Sale Administration & Marketing	<input type="checkbox"/> Wildlife Management

Name:	Joe Starkey	PROFESSIONAL FORESTRY SERVICES	
Company:	Long Forestry Consultation, LLC	<input checked="" type="checkbox"/> Appraisals: Trespass, Timber, and Forest land	<input type="checkbox"/> Biomass Marketing
Address:	94 Curtis St. Jerseyville, IL 62052	<input checked="" type="checkbox"/> Contractual Timber Work (TSI, crop tree release, pruning, etc.)	<input type="checkbox"/> Business Planning
Phone:	618-639-TREE	<input checked="" type="checkbox"/> Contractual Tree Planting (labor, trees, etc.)	<input checked="" type="checkbox"/> Carbon Sequestration & Carbon credits
Fax:		<input type="checkbox"/> Expert Testimony & Litigation	<input type="checkbox"/> Christmas Tree Management
Email:	joe@longforestry.com	<input checked="" type="checkbox"/> Forest Management Plans & Forest Inventory	<input checked="" type="checkbox"/> Conservation Stewardship Plans
Website:	www.longforestry.com	<input checked="" type="checkbox"/> Forest Valuation & Financial Analysis	<input checked="" type="checkbox"/> Ecological Restoration
Education:	B.S., Forest Resource Management, Southern Illinois University, 2013	<input checked="" type="checkbox"/> GPS & GIS Mapping Services	<input type="checkbox"/> Environmental Planning & Assessments
NRCS TSP:	Yes via Mike Long w/ Long Forestry Consultation; USDA-NRCS Technical Service Provider, CAP-Forest Management Plan (106), TSP-07-5882	<input checked="" type="checkbox"/> Herbicide Application & Recommendations	<input type="checkbox"/> Habitat Establishment (food plots, grasses, etc.)
Experience:	Long Forestry Consultation - January 2014 to Present	<input checked="" type="checkbox"/> Invasive Species Control / Removal	<input checked="" type="checkbox"/> Insect & Disease Evaluations
Affiliations:	Society of American Foresters, Illinois Consulting Foresters	<input checked="" type="checkbox"/> Prescribed Fire & Controlled Burn Plans	<input checked="" type="checkbox"/> Recreation Planning & Development
Insurance:	\$1 million per occurrence, \$2 million Aggregate, \$1 million Auto, \$1 million workers compensation	<input checked="" type="checkbox"/> Timber Cost Basis & Taxation	<input checked="" type="checkbox"/> Urban Forestry / Arboriculture
Service Area:	All counties north of I-64 in Illinois, eastern and northeastern Missouri	<input checked="" type="checkbox"/> Timber Sale Administration & Marketing	<input checked="" type="checkbox"/> Wildlife Management

Name:	Randy Stephens	PROFESSIONAL FORESTRY SERVICES	
Company:	Stephens Woodlands Management	<input checked="" type="checkbox"/> Appraisals: Trespass, Timber, and Forest land	<input type="checkbox"/> Biomass Marketing
Address:	11313 N. 725 th St. Robinson, IL 62454	<input checked="" type="checkbox"/> Contractual Timber Work (TSI, crop tree release, pruning, etc.)	<input type="checkbox"/> Business Planning
Phone:	(618) 544-2958 (618) 562-7942	<input type="checkbox"/> Contractual Tree Planting (labor, tree, etc.)	<input type="checkbox"/> Carbon Sequestration & Carbon Credits
Fax:	-----	<input type="checkbox"/> Expert Testimony & Litigation	<input checked="" type="checkbox"/> Christmas Tree Management
Email:	woodsmgmt@gmail.com	<input type="checkbox"/> Forest Management Plans & Forest Inventory	<input checked="" type="checkbox"/> Conservation Stewardship Plans
Website:	-----	<input type="checkbox"/> Forest Valuation & Financial Analysis	<input type="checkbox"/> Ecological Restoration
Education:	B.S., Forest Management, Southern Illinois University, 1973.		
Experience:	Consulting forester for 30+ years; Christmas Tree farming for 25 years		
Professional Affiliations:	Society of American Foresters; Illinois Consulting Foresters, Inc.; and Illinois Forestry Association		
Service Area:	Eastern, central, and southeastern Illinois; southwest Indiana.		

Name:	Dan Stice	PROFESSIONAL FORESTRY SERVICES	
Company:	Long Forestry Consultation	<input checked="" type="checkbox"/> Appraisals: Trespass, Timber, and Forest land	<input type="checkbox"/> Biomass Marketing
Address:	219 W. Wabash St. Effingham, IL 62401	<input checked="" type="checkbox"/> Contractual Timber Work (TSI, crop tree release, pruning, etc.)	<input type="checkbox"/> Business Planning
Phone:	217-821-7764	<input checked="" type="checkbox"/> Contractual Tree Planting (labor, trees, etc.)	<input checked="" type="checkbox"/> Carbon Sequestration & Carbon credits
Fax:		<input type="checkbox"/> Expert Testimony & Litigation	<input type="checkbox"/> Christmas Tree Management
Email:	dan@longforestry.com	<input checked="" type="checkbox"/> Forest Management Plans & Forest Inventory	<input checked="" type="checkbox"/> Conservation Stewardship Plans
Website:	www.longforestry.com	<input checked="" type="checkbox"/> Forest Valuation & Financial Analysis	<input checked="" type="checkbox"/> Ecological Restoration
Education:	B.S., Forest Resource Management, Southern Illinois University, 2013.		
NRCS TSP:	Yes via Mike Long w/ Long Forestry Consultation; USDA-NRCS Technical Service Provider, CAP-Forest Management Plan (106), TSP-07-5882		
Experience:	United States Marine Corps - Feb 2, 2006 to Feb.2 2010. Veterans Affairs - 2011 to 2013. Long Forestry Consultation - Dec. 2013 to Present		
Affiliations:	Society of American Foresters, Illinois Consulting Foresters		
Insurance:	\$1 million per occurrence, \$2 million Aggregate, \$1 million Auto, \$1 million workers compensation		
Service Area:	Southeastern and Central Illinois, Southwestern Indiana, Western Kentucky		

Name:	Benjamin J. Vandermyde	PROFESSIONAL FORESTRY SERVICES	
Company:	Tree Fallen	<input checked="" type="checkbox"/> Appraisals: Trespass, Timber, and Forest land	<input type="checkbox"/> Biomass Marketing
Address:	12056 Henry Rd Morrison, IL 61270	<input checked="" type="checkbox"/> Contractual Timber Work (TSI, crop tree release, pruning, etc.)	<input type="checkbox"/> Business Planning
Phone:	(815) 535-6483	<input checked="" type="checkbox"/> Contractual Tree Planting (labor, tree, etc.)	<input type="checkbox"/> Carbon Sequestration & Carbon Credits
Fax:	-----	<input type="checkbox"/> Expert Testimony & Litigation	<input type="checkbox"/> Christmas Tree Management
Email:	tree_fallen@hotmail.com	<input checked="" type="checkbox"/> Forest Management Plans & Forest Inventory	<input checked="" type="checkbox"/> Conservation Stewardship Plans
Website:	-----	<input checked="" type="checkbox"/> Forest Valuation & Financial Analysis	<input type="checkbox"/> Ecological Restoration
Education:	B.S., Forest Resource Management, Southern Illinois University, 2008. B.A., Administration of Justice, Southern Illinois University, 2008.		
NRCS TSP:	Yes; USDA-NRCS Technical Service Provider, CAP-Forest Management Plan (106), TSP-11-7853		
Experience:	Consultant since 2006; Prescribed Fire/controlled burns SIUC Firedawg Crew; Army Corps. of Engineers forester on the Rock Island District.		
Professional Affiliations:	Society of American Foresters		
Insurance Coverage:	Commercial Liability (\$2 million) with Davis-Garvin Agency, Inc.		
Service Area:	Northwest and west-central Illinois; and East-central Iowa		

Name:	Robert J. Wagoner	PROFESSIONAL FORESTRY SERVICES	
Company:	Central Illinois Forestry	<input checked="" type="checkbox"/> Appraisals: Trespass, Timber, and Forest land	<input type="checkbox"/> Biomass Marketing
Address:	2774 Whippoorwill Dr. Charleston, IL 61920	<input checked="" type="checkbox"/> Contractual Timber Work (TSP, crop tree release, pruning, etc.)	<input type="checkbox"/> Business Planning
Phone:	(217) 549-0060	<input checked="" type="checkbox"/> Contractual Tree Planting (labor, tree, etc.)	<input type="checkbox"/> Carbon Sequestration & Carbon Credits
Fax:	-----	<input checked="" type="checkbox"/> Expert Testimony & Litigation	<input checked="" type="checkbox"/> Christmas Tree Management
Email:	ciforestry@gmail.com	<input checked="" type="checkbox"/> Forest Management Plans & Forest Inventory	<input checked="" type="checkbox"/> Conservation Stewardship Plans
Website:	www.CentrallIllinoisForestry.com	<input checked="" type="checkbox"/> Forest Valuation & Financial Analysis	<input checked="" type="checkbox"/> Ecological Restoration
Education:	B.S., Forest Science, University of Illinois, 1999. A.S., Forest Technology, Southeastern Illinois College, 1972.		
NRCS TSP:	Yes; USDA-NRCS Technical Service Provider, CAP-Forest Management Plan (106), TSP-09-6320		
Experience:	Consulting forester since 2010; IL Dept. of Natural Resources district forester for 35+ yrs (retired); Certified Tree Farm Inspector #8884; USDA Technical Service Provider; Illinois Pesticide Applicator License #PA02911795.		
Professional Affiliations:	Illinois Tree Farm Committee (immediate past president); American Tree Farmer; Illinois Forestry Association; Illinois Forestry Development Council (voting member 2010-2012); Illinois Consulting Foresters, Inc.; and Illinois Chapter of the Walnut Council.		
Insurance Coverage:	General Liability and Workers Compensation (State Farm ®)		
Service Area:	Central & East-central Illinois: Champaign, Coles, Clark, Cumberland, Dewitt, Douglas, Edgar, Macon, Moultrie, Shelby, and Vermilion.		

Name:	Dana R. Walker	PROFESSIONAL FORESTRY SERVICES	
Company:	Consulting Forester	<input checked="" type="checkbox"/> Appraisals: Trespass, Timber, and Forest land	<input type="checkbox"/> Biomass Marketing
Address:	315 N. Madison St. Macomb, IL 61455-1623	<input checked="" type="checkbox"/> Contractual Timber Work (TSP, crop tree release, pruning, etc.)	<input type="checkbox"/> Business Planning
Phone:	(309) 833-3268	<input type="checkbox"/> Contractual Tree Planting (labor, tree, etc.)	<input type="checkbox"/> Carbon Sequestration & Carbon Credits
Fax:	-----	<input type="checkbox"/> Expert Testimony & Litigation	<input type="checkbox"/> Christmas Tree Management
Email:	-----	<input checked="" type="checkbox"/> Forest Management Plans & Forest Inventory	<input checked="" type="checkbox"/> Conservation Stewardship Plans
Website:	-----	<input checked="" type="checkbox"/> Forest Valuation & Financial Analysis	<input checked="" type="checkbox"/> Ecological Restoration
Education:	B.S., Forest Science, University of Illinois, 1975.		
Experience:	Professional consulting forester since 1995; Tree Farmer since 1991; Soil Conservationist with USDA-NRCS from 1978-1990.		
Service Area:	Western Illinois		

Name:	Matt Wittry	PROFESSIONAL FORESTRY SERVICES	
Company:	MW Forestry & Real Estate LLC	<input checked="" type="checkbox"/> Appraisals: Trespass, Timber, and Forest land	<input type="checkbox"/> Biomass Marketing
Address:	PO Box 1041 Wausau, WI 54402-1041	<input type="checkbox"/> Contractual Timber Work (TSP, crop tree release, pruning, etc.)	<input type="checkbox"/> Business Planning
Phone:	(715) 297-6877	<input type="checkbox"/> Contractual Tree Planting (labor, tree, etc.)	<input checked="" type="checkbox"/> Carbon Sequestration & Carbon Credits
Fax:	(715) 298-0414	<input checked="" type="checkbox"/> Expert Testimony & Litigation	<input type="checkbox"/> Christmas Tree Management
Email:	matt@mwforestry.com	<input checked="" type="checkbox"/> Forest Management Plans & Forest Inventory	<input checked="" type="checkbox"/> Conservation Stewardship Plans
Website:	www.mwforestry.com	<input checked="" type="checkbox"/> Forest Valuation & Financial Analysis	<input type="checkbox"/> Ecological Restoration
Education:	B.S., Forest Management, University of Wisconsin – Stevens Point, 1998.		
Experience:	Consulting Forester since 1998; Real Estate Services		
Professional Affiliations:	Society of American Foresters		
Insurance Coverage:	Call for information		
Service Area:	Illinois; Wisconsin; Michigan; and Minnesota		

Name:	Michael E. Woolery	PROFESSIONAL FORESTRY SERVICES	
Company:	Greenwood Forestry Consulting	<input checked="" type="checkbox"/> Appraisals: Trespass, Timber, and Forest land	<input type="checkbox"/> Biomass Marketing
Address:	815 Greenlee Ave. Winnebago, IL 61088	<input checked="" type="checkbox"/> Contractual Timber Work (TSI, crop tree release, pruning, etc.)	<input type="checkbox"/> Business Planning
Phone:	(815) 222-0009	<input checked="" type="checkbox"/> Contractual Tree Planting (labor, tree, etc.)	<input type="checkbox"/> Carbon Sequestration & Carbon Credits
Fax:	(877) 782-2514	<input checked="" type="checkbox"/> Expert Testimony & Litigation	<input type="checkbox"/> Christmas Tree Management
Email:	mike@greenwoodforestry.com	<input checked="" type="checkbox"/> Forest Management Plans & Forest inventory	<input checked="" type="checkbox"/> Conservation Stewardship Plans
Website:	www.GreenWoodForestry.com	<input checked="" type="checkbox"/> Forest Valuation & Financial analysis	<input checked="" type="checkbox"/> Ecological Restoration
Education:	M.S., Forestry, University of Illinois, 2000. B.S., Forest Science, University of Illinois, 1997.	<input type="checkbox"/> GPS & GIS Mapping Services	<input type="checkbox"/> Environmental Planning & Assessments
NRCS TSP:	Yes; USDA-NRCS Technical Service Provider, CAP-Forest Management Plan (106), TSP-04-3836	<input checked="" type="checkbox"/> Herbicide Application & Recommendations	<input checked="" type="checkbox"/> Habitat Establishment (food plots, grasses, etc.)
Experience:	Consulting forester since 2001; log and standing timber buyer for export company 2 years; Pesticide applicators license #CA20117423.	<input checked="" type="checkbox"/> Invasive Species Control / Removal	<input checked="" type="checkbox"/> Insect & Disease Evaluation
Professional Affiliations:	Society of American Foresters and Illinois Forestry Association	<input checked="" type="checkbox"/> Prescribed Fire & Controlled Burn Plans	<input checked="" type="checkbox"/> Recreation Planning & Development
Insurance Coverage:	Commercial General Liability with Errors and Omissions	<input type="checkbox"/> Timber Cost Basis & Taxation	<input checked="" type="checkbox"/> Urban Forestry / Arboriculture
Service Area:	Northern Illinois; southern Wisconsin	<input checked="" type="checkbox"/> Timber Sale Administration & Marketing	<input checked="" type="checkbox"/> Wildlife Management

This directory was produced in cooperation with:



Disclaimer:

The University of Illinois is not responsible, nor are our forestry and conservation partners, for any errors or omissions regarding consulting forester contact information, education, services, work experience, qualifications, expertise, or competencies. Moreover, the University of Illinois does not guarantee or warrant the performance of listed / unlisted professional consulting foresters or arborists.

Policy Regarding Consulting Forester Recommendations:

Please refrain from soliciting forestry consultant endorsements or recommendations from state and federal employees as they are not allowed to endorse or recommend one consultant over another. Thank you in advance for your understanding and cooperation regarding this policy.

About the Author:

Jay C. Hayek, Extension Specialist in Forestry, Department of Natural Resources and Environmental Sciences, College of ACES, University of Illinois at Urbana-Champaign.

Recommended Citation:

Hayek, J.C. 2016. Directory of Illinois professional consulting foresters. Univ. of Illinois Extension Tech. Forestry Bull. NRES-202. Urbana, IL. 31 p.

© 2016 University of Illinois. All Rights Reserved. Updated July 2016.

Information provided within this bulletin is for informational purposes only. Reference to specific external websites, trade names, commercial products, companies, or individuals does not imply endorsement by University of Illinois Extension, nor is discrimination intended against any that are not listed.

The Dept. of Natural Resources and Environmental Sciences and Extension Forestry at the University of Illinois would like to thank and acknowledge the Renewable Resources Extension Act (RREA) and the USDA National Institute of Food and Agriculture for extension forestry program funding.



University of Illinois • U.S. Department of Agriculture • Local Extension Councils Cooperating

University of Illinois Extension provides equal opportunities in programs and employment.

College of Agricultural, Consumer and Environmental Sciences