

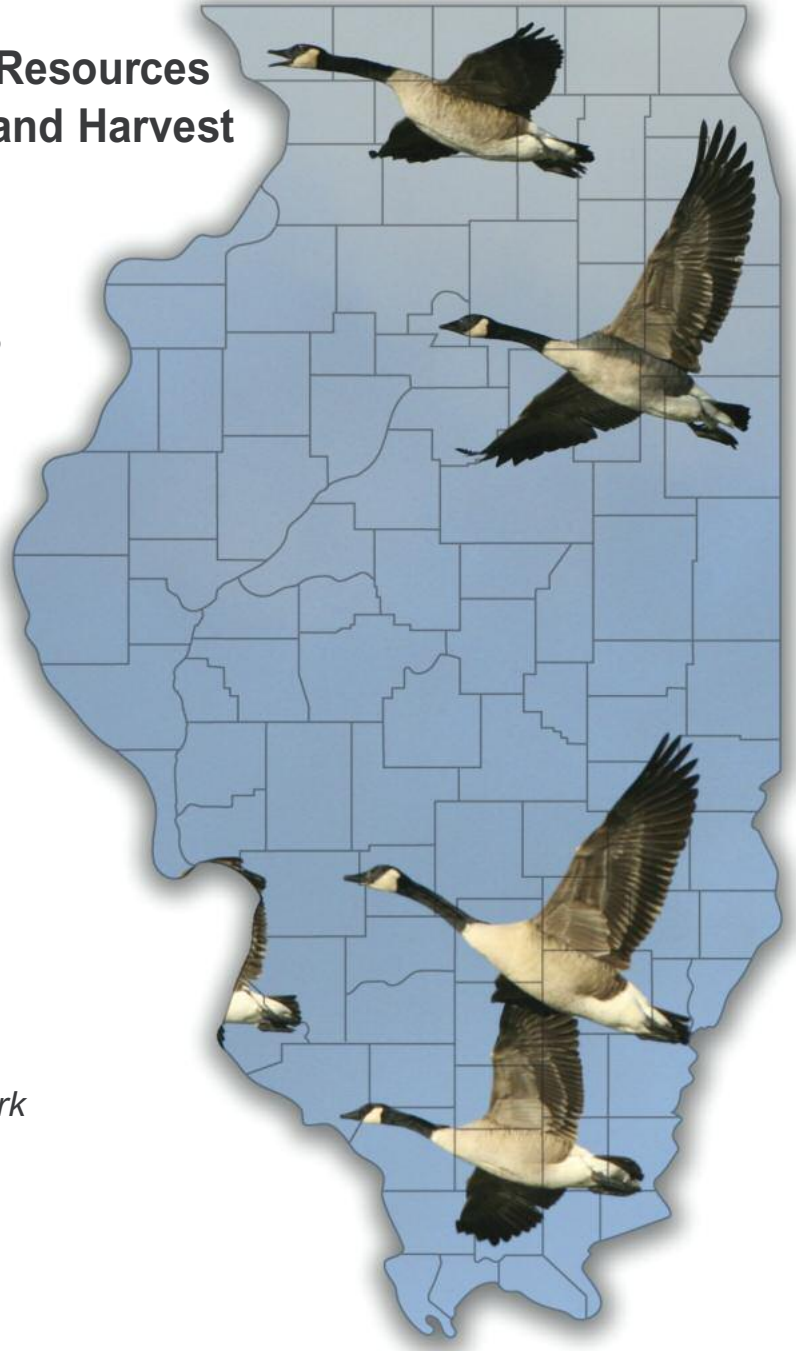


State of Illinois
Illinois Department of Natural Resources

Illinois Public Hunting Areas Report

Illinois Department of Natural Resources
Public Lands - Hunting Effort and Harvest

2012 - 2013 Season
April 1, 2012 to March 31, 2013



*By Gary E. Potts and Connie Wieda-Stark
Division of Wildlife Resources*



Dr. James Herkert, Director
Office of Resource Conservation

John Buhnerkempe, Chief
Division of Wildlife Resources

November 1, 2013

PERMISSION TO QUOTE

Persons wishing to quote from this record or to use it in other forms should first obtain permission from the Project Leader or the Chief of the Division of Wildlife Resources – Illinois Department of Natural Resources.

Equal opportunity to participate in programs of the Illinois Department of Natural Resources (IDNR) and those funded by the U.S Fish and Wildlife Service and other agencies is available to all individuals regardless of race, sex, national origin, disability, age, religion or other non-merit factors. If you believe you have been discriminated against, contact the funding source's civil rights office and/or the Equal Employment Opportunity Officer, IDNR, One Natural Resources Way, Springfield, IL 62702-1271, 217/782-2662; TTY 217/782-9175.

This information may be provided in an alternative format if required. Contact the IDNR Clearinghouse at 217/782-7498 for assistance.

Printed by the authority of the State of Illinois

TABLE OF CONTENTS

Abstract	i
Acknowledgment	ii
Introduction	1
Methods and Procedures	2
Illinois Public Hunting Sites	6
Illinois Public Hunting Sites Location Map	7
Hunting Effort & Wildlife Harvest on Public Hunting Areas:	
Table 1. Region 1	8
Table 2. Region 2	11
Table 3. Region 3	12
Table 4. Region 4	14
Table 5. Region 5	16
Table 6. Illinois public hunting sites with no site data collection	18
Table 7. Summary of hunting effort and wildlife harvest on Illinois public hunting areas by region	19
Table 8. Statewide percent change of the 2012-13 vs. 2011-12 hunting season ...	20
Graphs. 1986-2012 hunting effort, acreage and harvest data	21
Table 9. Mourning Dove hunting effort and harvest	25
Table 10. Hunting effort and wildlife harvest on controlled hunting areas on Illinois public land	26

Table 11. The statewide public lands wildlife habitat development Project – federal aid project W-76-D	27
Table 12. The statewide public lands wildlife habitat development Project (federal aid project W-76-D) percent change 2012-13 vs. 2011-12 seasons	30
Table 13. Waterfowl harvest, hunter trips and success rates during the 2012-13 Illinois waterfowl season at 48 public areas	31
Table 14. Teal harvest, days afield and success rate during the 16 day Teal season in 2012	33
Table 15. Ducks harvested, days afield and success rate during the 2 day Youth hunting season in 2012	33
References	34

Illinois Public Hunting Areas Report – 2012 – 2013 Season

Abstract: The 2012-2013 Hunting season opened on April 1, 2012 and ended March 31, 2013. The Illinois Department of Natural Resources (IDNR) managed 200 public hunting sites during this period. Various methods of data collection were used and information was recorded at 181 public land sites throughout Illinois. There are 19 additional sites that allow public hunting that currently have no facilities or resources available for on-site data collection. Statewide 256,880 hunting trips resulted in 188,431 units of wildlife harvested on Illinois public lands. This equates to a hunter success ratio of .73 units of wildlife harvested per hunter trip. A -7% decrease in hunting effort and a 1% increase in harvest were recorded compared to the 2011-12 hunting season. Mourning dove and waterfowl (duck) harvests can experience extreme harvest fluctuation annually due to liberal bag limits, habitat conditions and fall migration chronology. The 2012 mourning dove harvest increased 14% (4,096 units) and duck harvest increased 4% (4,114 units). Wildlife harvest increases (units in parentheses) were recorded for cottontail rabbit 49% (1,012), squirrel 13% (1,376), and deer gun 6% (158). Harvest decreases are noted for raccoon -16% (457), ring-necked pheasant (both wild and released) -24% (8,657), bobwhite quail -5% (58), geese -14% (513), eastern wild turkey -5% (12), deer archery -1% (14), and a combination of 13 other species (primarily furbearers and crow) -15% (392) on Illinois public land sites when comparing the 2012-13 harvest data to the 2011-12 hunting season results. The 2012-2013 trapping season marked the first year since 1929 that river otters were trapped in Illinois with a total of 33 river otters harvested on statewide public lands.

ACKNOWLEDGMENTS

A special note of thanks goes to the many individuals who are responsible for providing information in this report. Site personnel operate check stations and perform other duties associated with collection of daily, weekly, monthly and annual hunting effort and harvest data. District wildlife biologists coordinate the data collection and summarize the final results. Other Illinois Department of Natural Resources (IDNR) administrative and field staff provide technical information and guidance in various ways. The efforts of IDNR staff results in a high quality long term data base that provides valuable information for wildlife management purposes.

INTRODUCTION

The *Illinois Public Hunting Areas Report* is developed each year to provide information on public hunting/trapping effort and wildlife harvest. This year's report provides both hunting and trapping information on 200 Illinois Department of Natural Resources (IDNR) owned, leased and managed public hunting sites.

Three tables (13, 14 and 15) contained in this report, provide specific information concerning the 2012-13 waterfowl season on 48 public land sites where waterfowl hunting is provided in Illinois.

The Federal Aid in Wildlife Restoration Program (resulting from the Pittman-Robertson Act of 1937 – a cost share program administered by the U.S. Fish & Wildlife Service) has either funded or is currently funding wildlife habitat developments, or has acquired land on 116 of the 181 public hunting and trapping areas. Pittman-Robertson (P-R) funding provides wildlife habitat development, maintenance activity, research projects and land acquisition for wildlife management purposes in Illinois. P-R funds also provide funding for Illinois hunter safety course administration and materials. The purpose of the P-R Act is to strengthen the ability of the States to preserve, protect and enhance wild animal and bird resources. Benefits include providing increased public enjoyment of these resources.

METHODS AND PROCEDURES

Methods:

The principal methods used to document hunting/trapping effort and collect harvest data are through manned hunter check stations, permits issued from both the IDNR permit office and the individual site, annual registration and sign in/sign out boxes and through on-line registration and reporting. A majority of these methods have existed on a large number of Illinois public land sites since inception of the respective hunting and trapping programs. Hunter survey questionnaires are periodically used by a few waterfowl sites where limited staff and other complications result in limited or no consistent hunting or trapping data collection. Data is submitted by site staff either monthly or annually for district wildlife biologist summary tabulation. The IDNR **ILCHECK** telephone and on-line check-in systems are utilized for white-tailed deer and wild turkey, providing more detailed harvest information from an increased number of public land sites.

Procedures:

Project personnel that collect hunting/trapping effort and harvest data for this report use four forms and/or the online harvest information.

- **Hunter Harvest Survey (Forms A & B)** – These surveys are completed on a daily basis by hunters during the respective hunting season. It lists such information as the user's name, address, date, hours hunted and species harvested. These forms are then compiled on a monthly basis for submission to the site's district wildlife biologist. Several different styles of waterfowl data collection sheets are used by various sites – the waterfowl summary for B is a representative sample used by waterfowl sites.
- **Monthly Hunter Harvest Summary (Form C)** – This form is utilized by site staff to compile monthly hunting effort and harvest data. The sites list their name, region, year and month the data is compiled. Hunter trips are recorded by species for dove, deer, wild turkey and squirrels. Waterfowl hunting sites use a modified version of this form that lists duck and goose species. Hunter trips for individuals pursuing upland game species; rabbit, quail, woodcock, pheasant and other species are usually grouped.
- **2012-2013 Hunting Effort and Harvest Report Summary – For Illinois Public Hunting Sites (Form D)** – This annual report form is compiled by each respective district wildlife biologist. The biologists tabulate each of the monthly report submissions (Form D), from April 1, 2012 through March 31, 2013, received from their public land sites. This form lists summary information that is used to compile the 2012-2013 **Illinois Public Hunting Areas Report**.
- **Free Site Hunting Windshield Cards Online** – The online free hunting windshield card system was initiated in April of 2010 at Region 3 public hunting areas on a trial basis while developing the program for statewide implementation. The IDNR now uses the online free site hunting windshield card and harvest reporting system on many sites statewide. Go to <https://dnr.state.il.us/windshieldcard/index.asp> to view the "Free Site Hunting Permits" system.

Daily Hunter Harvest Summary (FORM A)

Area: _____ Year: _____ Manned Check Station () Yes () No Sheet No. _____

HUNTERS PLEASE PROVIDE COMPLETE INFORMATION

Hunters Name / Address	Month Day	Hours Hunted	Dove	Squirrel	Rabbit	Pheasant	Quail	Deer Gun	Deer Bow	Other Species Number Harvest & Hours Hunted
Total Each Column										

Daily Waterfowl Hunter Harvest Summary (FORM B)

Name & Address	Check-In Time	Check-Out Time	Total Harvest	Mallard	Wood Duck	Widgeon	Gadwell	Teal	Shoveler	Other duck species - list species & no. List geese species harvested & no.
Total Each Column										

Monthly Hunter Harvest Summary (FORM C)

Site Name : _____ Region: _____

Month: _____ Year: _____

Species Hunted	Number of Hunter Trips	Number Harvested
1. Dove		
2. Squirrel		
3. Rabbit		
4. Pheasant		
5. Quail		
6. Deer (Bow)		
7. Deer (Gun)		
Name Other Species		
8.		
9.		
10.		
Total all Columns		

2012-2013 Hunting Effort and Harvest Report-Summary for Illinois Public Hunting Sites (FORM D)

District Wildlife Biologist:

Sites	Total Acres	Total Acres Hunted	Hunter Trips	Dove	Squirrel	Rabbit	Pheasant	Quail	Ducks	Geese	Wild Turkey	Deer/ Gun	Deer/ Bow	Total Other Species	Total Units Harvested
1															0
2															0
3															0
4															0
5															0
6															0
7															0
8															0
9															0
10															0
11															0
12															0
13															0
14															0
15															0
16															0
17															0
18															0
TOTALS	0	0	0	0	0	0	0	0	0	0	0	0	0	0	0

Region 1 Sites	Beaver	Coot	Coyote	Crow	Fox	Mink	Muskrat	Opossum	Raccoon	River Otter	Skunk	Snipe	Wood-chuck	Wood-cock	Totals
1															0
2															0
3															0
4															0
5															0
6															0
7															0
8															0

ILLINOIS PUBLIC HUNTING SITES

REGION 1

1. Anderson Lake SFWA
2. Apple River Canyon SP Complex
3. Argyle Lake SP
4. Banner Marsh SFWA
5. Big Bend SFWA
6. Big River SF
7. Bradford SHA
8. Castle Rock SP
9. Donnelley SFWA
10. Double "T" SFWA
11. Dublin Highlands SHA
12. Franklin Creek SNA
13. French Bluff SNA
14. George S. Park SNA
15. Green River SWA
16. Hanover Bluff SNA
17. Hennepin Canal ST
18. Ilo Dillin SHA
19. Johnson Sauk Trail SRA
20. Jubilee College SP
21. Kishwaukee River SNA
22. Lake DePue SFWA
23. Lake Le-Aqua-Na SRA
24. Little Rock Creek SHA
25. Lowden/Miller SF
26. Lowden Memorial SP
27. Mackinaw River SFWA
28. Manito SHA
29. Marseilles SFWA
30. Marshall SFWA
31. Matthiessen SP
32. Mautino SFWA
33. Maytown SHA
34. Miller-Anderson Woods SNA
35. Mississippi-Palisades SP
36. Mississippi River Pool #16 SFWA
37. Mississippi River Pool #17 SFWA
38. Mississippi River Pool #18 SFWA
39. Mitchell's Grove SNA
40. Morrison-Rockwood SP
41. Nachusa Prairie SNA
42. Pekin Lake SFWA
43. Powerton Lake SFWA
44. Rall Woods SNA
45. Rice Lake SFWA
46. Rock Cut SP
47. Rockton Bog SNA
48. Sand Prairie SHA
49. Sandy Ford SNA
50. Shabbona Lake SP
51. Sinnissippi Lake SWA
52. Snakeden Hollow SFWA
53. Spoon River SF
54. Spring Lake SFWA
55. Starved Rock SP
56. Steward SHA
57. Tapley Woods SNA
58. Victoria SHA
59. Wards Grove SNA
60. White Pines SP
61. Whitefield SHA
62. Winston Tunnel SNA
63. Witkowsky SWA
64. Woodford County SFWA

REGION 2

65. Chain-O-Lakes SP
66. Des Plaines SFWA
67. Des Plaines Game Propagation Center NC
68. Heidecke Lake FWA/GLP SNA
69. I & M Canal ST
70. James Pate Phillip SP
71. Kankakee River SP
72. Mazonia-Braidwood SFWA
73. Momence Wetlands SNA
74. Moraine Hills SP

75. Redwing Slough/ Deer Lake SNA
76. Silver Springs SFWA
77. Volo-Wilson Bog SNA
78. William W. Powers SRA

REGION 3

79. Birkbeck SHA
80. Butterfield Trail SRA
81. Clifton SHA
82. Clinton Lake SRA
83. Eagle Creek SRA
84. Finrock SHA
85. Fox Ridge SP
86. Gifford SHA
87. Hallsville SHA
88. Harry "Babe" Woodyard SNA
89. Herschel Workman SHA
90. Hidden Springs SF
91. Hindsboro SHA
92. Hurricane Creek (Paul C. Burrus) SHA
93. Iroquois County SFWA
94. Kickapoo SRA
95. Lincoln Trail SP
96. Loda SHA
97. Middle Fork SFWA
98. Milks Grove SHA
99. Moraine View SRA
100. Perdueville SHA
101. Saybrook SHA
102. Shelbyville SFWA
103. Sibley SHA
104. Walnut Point SP
105. Weldon Springs SP -(Piatt County Unit)
106. Willow Creek SHA
107. Wolf Creek SP

REGION 4

108. Batchtown SFWA
109. Beaver Dam SP
110. Bohm's Woods
111. Calhoun Point SFWA
112. Cedar Glen SNA
113. Clear Lake SHA
114. Coffeen Lake SFWA
115. Copperhead Hollow SWA
116. Edward R. Madigan SFWA
117. Eldon Hazlet SRA
118. Ft. de Chartres SM
119. Ft. Kaskaskia SM
120. Frank Holten SP
121. Freeman Mine SHA
122. Fuller Lake SFWA
123. Glades-12 Mile Island SFWA
124. Godar-Dia.-Hurricane Is. SFWA
125. Goode's Woods NP
126. Helmbold Slough SFWA
127. Horseshoe Lake - Madison SP
128. Horseshoe Lake - Madison SP - (Island Units Complex)
129. Illinois River SFWA
130. Jim Edgar Panther Creek SFWA
131. Kaskaskia River SFWA
132. Kidd Lake SNA
133. Mississippi River - Pool #21 SFWA
134. Mississippi River - Pool #22 SFWA
135. Mississippi River - Pool #24 SFWA
136. Mississippi River - Pool #25 SFWA
137. Oakford SHA
138. Peabody River King SFWA
139. Pere Marquette SP
140. Piasa Island SFWA
141. Randolph County SRA
142. Ray Norbut SFWA
143. Red's Landing SFWA
144. Rip-Rap Landing SFWA
145. Sand Ridge SF

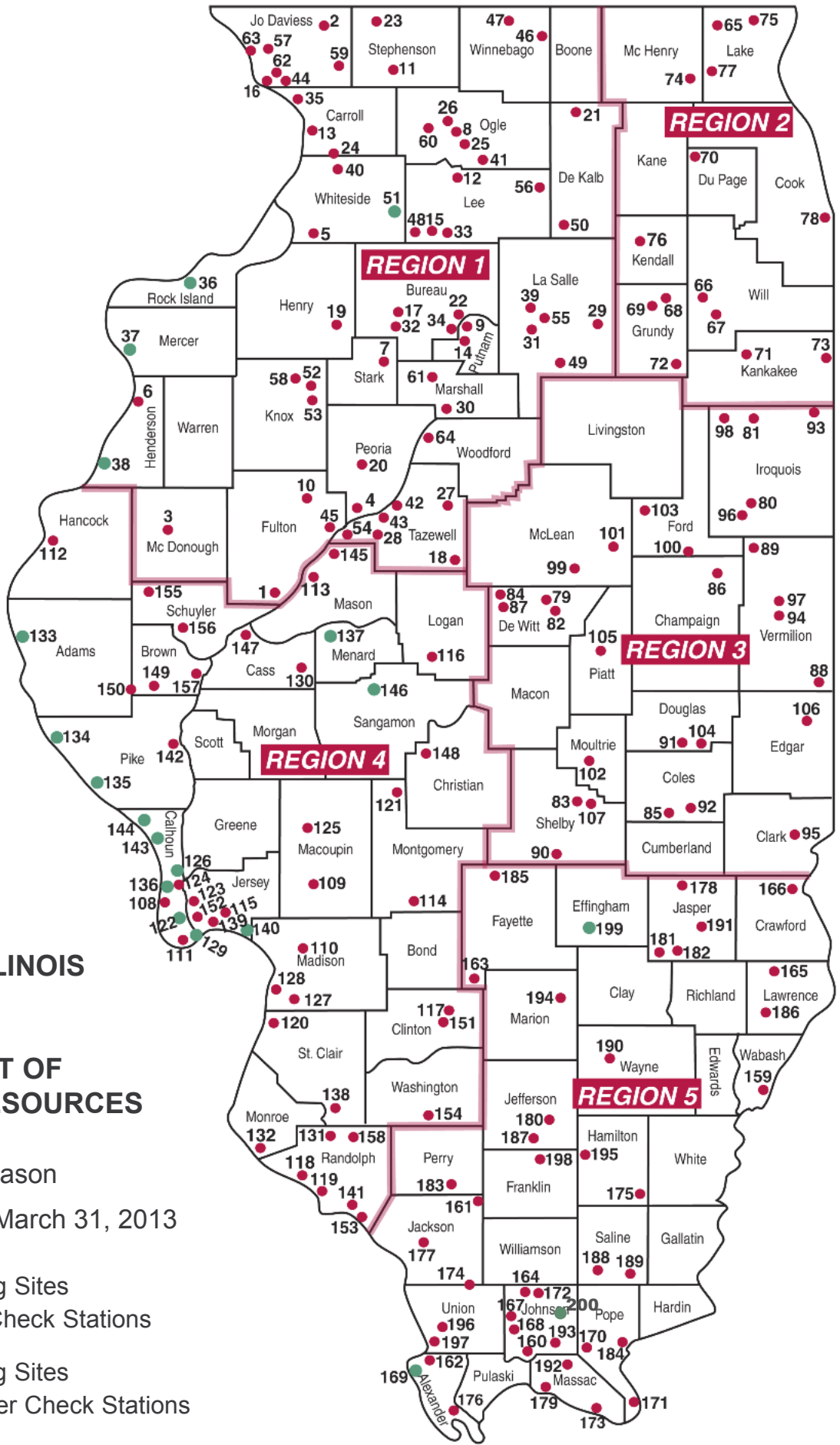
146. Sangamon River SFWA
147. Sanganois SFWA
148. Sangchris Lake SRA
149. Siloam Springs SP -(Buckhorn Unit)
150. Siloam Springs SP
151. South Shores SP
152. Stump Lake SFWA
153. Turkey Bluffs SFWA
154. Washington County SRA
155. Weinberg-King SP
156. Weinberg-King SP - (Scripps Unit)
157. Weinberg-King SP - (Spunky Bot. Unit)
158. World Shooting & Recreational Center

REGION 5

159. Beall Woods SP
160. Cache River SNA
161. Campbell Pond SHA
162. Cape Bend SFWA
163. Carlyle Lake SFWA
164. Cedar-Draper Bluff SNA
165. Chauncey Marsh SNA
166. Crawford County SFWA
167. Cypress Pond SNA
168. Deer Pond SNA
169. Devil's Island SFWA
170. Dixon Springs SP
171. Dog Island SFWA
172. Ferne Clyffe SP
173. Ft. Massac SP
174. Giant City SP
175. Hamilton County SFWA
176. Horseshoe Lake-Alexander SFWA
177. Kinkaid Lake SFWA
178. Meeke SHA
179. Mermet Lake SFWA
180. Mt. Vernon Game Propagation Ctr. NC
181. Newton Lake SFWA
182. Prairie Ridge SNA
183. Pyramid SP
184. Rauchfess Hill
185. Ramsey Lake SRA
186. Red Hills SP
187. Rend Lake SFWA
188. Sahara Woods SFWA
189. Saline County SFWA
190. Sam Dale Lake SFWA
191. Sam Parr SFWA
192. Sielbeck Forest SNA
193. Skinner Farm SFWA
194. Stephen A. Forbes SRA
195. Ten Mile Creek SFWA
196. Trail of Tears SF
197. Union County SFWA
198. Wayne Fitzgerrell SRA
199. Wildcat Hollow SHA
200. Wise Ridge SNA *

KEY

SFWA	-State Fish and Wildlife Area
SP	-State Park
SF	-State Forest
SNA	-State Natural Area
SWA	-State Wildlife Area
SHA	-State Habitat Area
SM	-State Memorial
SRA	-State Recreation Area
ST	-State Trail
NC	- Not Classified
NP	- Nature Preserve
CTR	- Center
*New 2012-13 public hunting and trapping areas.	



STATE OF ILLINOIS

ILLINOIS DEPARTMENT OF NATURAL RESOURCES

2012 - 2013 Season
 April 1, 2012 - March 31, 2013

- Public Hunting Sites With Hunter Check Stations
- Public Hunting Sites With No Hunter Check Stations

Table 1. Hunting effort and wildlife harvest on public areas in Region 1, 2012-2013 season

Region 1 Sites	Total Acres	Total Acres Hunted	Hunter Trips	Dove	Squirrel	Rabbit	Pheasant	Quail	Ducks	Geese	Wild Turkey	Deer/ Gun	Deer/ Bow	Total Other Species	Total Units Harvested
1 Anderson Lake SFWA	2248	2000	2807	60		9			2690	28			6	31	2824
2 Apple River Canyon SP - Thompson/Salem Units	1484	951	784		102	1					7	7	8	1	126
3 Argyle Lake SP	1800	950	442		60	3					5	2	12	1	83
4 Banner Marsh SFWA	4432	3000	3246	27		109		1	1002	191			48	83	1461
5 Big Bend SFWA	2376	2338	3535	668	141	104	31	3			10		52	20	1029
6 Big River SF	2997	2970	856	16	21	21					12	19	27		116
7 Bradford SHA	103.5	100	37				13	3							16
8 Castle Rock SP	2000	1620	970		132						7	40	22		201
9 Donnelley SFWA	780	676	521						138	7					145
10 Double "T" SFWA	1957	377	734	607					154	144				29	934
11 Dublin Highlands SHA	122	122	24			1	2								3
12 Franklin Creek SNA	638	635	813									5	22		27
13 French Bluff SNA	344	342	193		110						3	8	4		125
14 George S. Park SNA	80	80	95												0
15 Green River SWA a/	2565	2515	2227	1650	3	57	98				3	35	17		1863
16 Hanover Bluff SNA	348.75	332.75	210		107	4					2	2	4		119
17 Hennepin Canal ST	5348	4854	198	75									14	626	715
18 Ilo Dillin SHA	79	75	65			8	3						2		13
19 Johnson-Sauk Trail SRA b/	1361	862	2003	1516	95	9	897						15	29	2561
20 Jubilee College SP	3222	2900	3709	320	83	6					3	35	61		508
21 Kishwaukee River SNA	570	484	97									3	11		14
22 Lake DePue SFWA	2351	1700	903						536	19				11	566
23 Lake-Le-Aqua-NA SRA	715	650	255	73								21	11	78	183
24 Little Rock Creek SHA	150	148	154			8	32	1							41
25 Lowden-Miller SF	2289	2225	1198		304						19	53	17		393
26 Lowden Memorial SP	219	80	86												0
SUB TOTALS	40579	32986.75	26162	5012	1158	340	1076	8	4520	389	71	230	353	909	14066

Continues on Page -9-

Table 1. Hunting effort and wildlife harvest on public areas in Region 1, 2012-2013 season

Region 1 Sites	Total Acres	Total Acres Hunted	Hunter Trips	Dove	Squirrel	Rabbit	Pheasant	Quail	Ducks	Geese	Wild Turkey	Deer/ Gun	Deer/ Bow	Total Other Species	Total Units Harvested
27 Mackinaw River SFWA a/	1415	1400	2021	1138	135	51	23				2	7	29	13	1398
28 Manito SHA	78	70	27												0
29 Marseilles SFWA	2515	2239	2140	2	232	46						93	29		402
30 Marshall SFWA	6539	4876	3598	31	252	10		1	1841	133		12	22	103	2405
31 Matthiessen SP c/	1935	1500	678	1687	162									11	1860
32 Mautino SFWA	911	891	766	101										18	156
33 Maytown SHA	160	159	31			2						1	3		6
34 Miller-Anderson Woods SNA	522	522	664									17	13		30
35 Mississippi-Palisades SP	2550	1500	1441								5	8	23		36
36 Mitchell's Grove SNA c/	185	170	117										5		5
37 Morrison-Rockwood SP	1152	1100	468	53	140						3	24			220
38 Nachusa Prairie SNA	72	72	38			4	3								7
39 Pekin Lake SFWA	1488	1200	636										6		6
40 Powerton Lake SFWA	1400	855	478						520	63				1	584
41 Rall Woods SNA	283	283	525		164							10	11		185
42 Rice Lake SFWA	6811	1490	4707						5365	90			11	35	5501
43 Rock Cut SP	2750	2750	139									15		44	59
44 Rockton Bog SNA	119	119	130												0
45 Sand Prairie SHA	316	316	41	478		4	3	4							489
46 Sandy Ford SNA c/	203	203	263		91						1		3		95
47 Shabbona Lake SP	1550	776	1931	183					17	4			57	99	360
48 Snakeden Hollow SFWA	2500	2500	502	852					16	95			5	80	1048
49 Spoon River SF	1680	1650	2303		225	2					4	20	38	24	313
50 Spring Lake SFWA	2031	1500	2066		70				921	117			3	244	1355
51 Starved Rock SP	2817	2817	3654						148	40		53	58		299
52 Steward SHA	80	80	49				8								8
53 Tapley Woods SNA	259	259	235		114						4	4	1		123
SUB TOTALS	42321	31297	29648	4525	1585	119	37	5	8828	542	19	264	335	691	16950

Table 1. Hunting effort and wildlife harvest on public areas in Region 1, 2012-2013 season

Region 1 Sites	Total Acres	Total Acres Hunted	Hunter Trips	Dove	Squirrel	Rabbit	Pheasant	Quail	Ducks	Geese	Wild Turkey	Deer/ Gun	Deer/ Bow	Total Other Species	Total Units Harvested
54 Victoria SHA	241	241	47				11	4							15
55 Wards Grove SNA	337.6	335	174									14	4		18
56 White Pines State Park	385	300	84									7	3		10
57 Whitefield PHA	118	117	31				10								10
58 Winston Tunnel SNA	227	207	208		9	5					1	3	8		26
59 Witkowsky SWA	1095	1095	912		101						13	23	20	1	158
60 Woodford SFWA	5426	1840	2309		2				2618	100			2	1	2723
Sub Total	7829.6	4135	3765	0	112	5	21	4	2618	100	14	47	37	2	2960
TOTALS:	90730	68418.75	59575	9537	2855	464	1134	17	15966	1031	104	541	725	1602	33976

a/Controlled permit pheasant hunting area

b/ Daily drawing pheasant hunting area

c/ Matthiessen SP, Mitchell's Grove and Sandy Ford SNA - Deer hunter effort is included in Starved Rock data.

Table 1.1. Site specific - other species harvest totals.

Region 1 Sites	Beaver	Coot	Coyote	Crow	Fox	Mink	Muskrat	Opossum	Raccoon	River Otter	Skunk	Snipe	Wood-chuck	Wood-cock	Totals
1 Anderson Lake SFWA		31													31
2 Apple River Canyon SP/Thompson/Salem Units			1												1
3 Argyle Lake SP			1												1
4 Banner Marsh SFWA	51	4					25			3					83
5 Big Bend SFWA									15					5	20
6 Double "T" SFWA							29								29
7 Hennepin Canal ST	126					28	259		209	4					626
8 Johnson-Sauk Trail SRA								6	23						29
9 Lake DePue SFWA	10									1					11
10 Lake -Le-Aqua-Na SRA									78						78
11 Mackinaw River SFWA	1								12						13
12 Marshall SFWA	22						18		63						103
13 Matthiessen SP								4	7						11
14 Mautino FWA	2					1	27		7						37
15 Powerton Lake SFWA		1													1
16 Rice Lake SFWA	11	35								2					48
17 Rock Cut SP									44						44
18 Shabbona Lake SP	5						13		81						99
19 Snakeden Hollow SFWA			10			1	19	5	38	7					80
20 Spoon River SF				4				2	18						24
21 Spring Lake SFWA	10	106				1	111	1	11	4					244
22 Witkowsky SFWA			1												1
23 Woodford SFWA						1									1

Table 2. Hunting effort and wildlife harvest on public areas in Region 2, 2012-2013 season

Region 2 Sites	Total Acres	Total Acres Hunted	Hunter Trips	Dove	Squirrel	Rabbit	Pheasant	Quail	Ducks	Geese	Wild Turkey	Deer/ Gun	Deer/ Bow	Total Other Species	Total Units Harvested
1 Chain O' Lakes SP	b/ 5926	2578	1637	27	21		55		431	49	1	10	11		605
2 Des Plaines SFWA	a/ 5012	3500	9178	1981		16	7272	6	189	31		16	40	4	9555
3 Des Plaines Game Propagation Center NC	240	134	1082										16	66	82
4 Heidecke Lake SFWA & GLPSNA	4313	3813	2733						828	13		59	23		923
5 Illinois & Michigan Canal ST	3000	2500	1574											112	112
6 James "Pate" Philip SP	507	415	200										5		5
7 Kankakee River SP	a/ 4000	2000	3319	327	260	39	1340		65	25	3		21		2080
8 Mazonia-Braidwood SFWA	5319	3032	3861			4			1559	95			20		1678
9 Momence Wetlands SNA	518	481	425		24				19	2	2	1	19		67
10 Moraine Hills SP	2560	2385	222									14	3		17
11 Red-Wing Slough/Deer Lake SNA	711	200	196						154	35					189
12 Silver Springs SFWA	b/ 1314	900	4951	1157	142	2	4800						13	1	6115
13 Volo-Wilson Bog SNA	1243	1243	279										10		10
14 William W. Powers SRA	650	419	583						136	56					192
TOTALS:	35313	23600	30240	3492	447	61	13467	6	3381	306	6	100	181	183	21630

a/ Controlled permit pheasant hunting area

b/ Public/private partnership pheasant hunting area

Table 2.1. Site specific - other species harvest totals.

Region 2 Sites	Beaver	Coot	Coyote	Crow	Fox	Mink	Muskrat	Opossum	Raccoon	River Otter	Skunk	Snipe	Wood-chuck	Wood-cock	Totals
1 Des Plaines SFWA			4												4
2 Des Plaines Game Propagation Ctr.	2						7	16	41						66
3 Illinois & Michigan Canal ST	29					2	56	2	22	1					112
4 Silver Springs SFWA			1												1

Table 3. Hunting effort and wildlife harvest on public areas in Region 3, 2012-2013 season

Region 3 Sites	Total Acres	Total Acres Hunted	Hunter Trips	Dove	Squirrel	Rabbit	Pheasant	Quail	Ducks	Geese	Wild Turkey	Deer/ Gun	Deer/ Bow	Total Other Species	Total Units Harvested
1 Birkbeck SHA	80	80	48				27								27
2 Butterfield Trail SRA	142	120	471		179								10	6	195
3 Clifton SHA	80	79	48				10								10
4 Clinton Lake SRA a/	9937	6082	6163	158	648	228	52				43	2	224	210	1565
5 Eagle Creek SRA	2313	520	632		13			2					40	21	76
6 Finrock SHA b/	377	377	36				23								23
7 Fox Ridge SP	1516	945	844	78	53	35	1				2	10	25	25	229
8 Gifford SHA	100	100	40				9	1							10
9 Hallsville SHA	80	80	42			2	17								19
10 Harry 'Babe' Woodyard SNA	1083	1049	1076	201	150						2	18	26	16	413
11 Herschel Workman SHA	135	135	33			2	9								11
12 Hidden Springs SF	1129	963	265		235	21	1	2			3	11	21	43	337
13 Hindsboro SHA	90	85	47			2	8								10
14 Iroquois County SFWA a/	2788	2185	4520	1217	130	34	2462	3			4	32	43		3925
15 Kickapoo SRA	3981	2381	1844		241	12			1			39	36	45	374
16 Lincoln Trail SP	1023.94	857	205										31	41	72
17 Loda SHA	160	160	44			3	8								11
18 Middle Fork SFWA	2813	2628	2507	8	232	124	1	10				31	48	131	585
19 Milks Grove SHA	79	79	47			3	20								23
20 Moraine View SRA a/	1687	1191	2559	226	331	167	62				7		38	4	835
21 Paul C. Burrus SHA (formerly Hurricane Creek SHA)	397	376	105		24		2				1	2	8		37
22 Perdueville SHA	120	120	38			2	8								10
23 Saybrook SHA	646	646	123			1	152								153
24 Shelbyville SFWA	6450	6350	8079	749	439	314	37	2	878	37	8	21	50	146	2681
25 Sibley SHA	635	630	117			1	64								65
Sub - Totals	37841.94	28218	29933	2637	2675	951	2973	20	879	37	70	166	600	688	11696

Continues on Page -13-

Continued from Page -12-

Table 3. Hunting effort and wildlife harvest on public areas in Region 3, 2012-2013 season

Region 3 Sites	Total Acres	Total Acres Hunted	Hunter Trips	Dove	Squirrel	Rabbit	Pheasant	Quail	Ducks	Geese	Wild Turkey	Deer/ Gun	Deer/ Bow	Total Other Species	Total Units Harvested
26 Walnut Point SP	592	573	627		129								11	40	180
27 Weldon Springs SP-(Piatt Co. Unit)	770	656	29											23	23
28 Willow Creek SHA	87	87	30			5									5
29 Wolf Creek SP	2000	500	16			4					5	6	36	27	78
Sub Totals	3449	1816	702	0	129	9	0	0	0	0	5	6	47	90	286
TOTALS:	41290.94	30034	30635	2637	2804	960	2973	20	879	37	75	172	647	778	11982

a/ Controlled permit pheasant hunting area

b/ No Hunter Trip data was collected.

Table 3.1. Site specific - other species harvest totals.

Region 3 Sites	Beaver	Coot	Coyote	Crow	Fox	Mink	Muskrat	Opossum	Raccoon	River Otter	Skunk	Snipe	Wood-chuck	Wood-cock	Totals
1 Butterfield Trail SRA									6						6
2 Clinton Lake SRA	2		2					6	200						210
3 Eagle Creek SRA									21						21
4 Fox Ridge SP									25						25
5 Harry 'Babe' Woodyard SNA									16						16
6 Hidden Springs SF			5						38						43
7 Kickapoo SRA			1					1	43						45
8 Lincoln Trail SP									41						41
9 Middle Fork SFWA			1						129					1	131
10 Moraine View SRA			1						3						4
11 Shelbyville SFWA		20	3		1			17	103					2	146
12 Walnut Point SP									40						40
13 Weldon Springs	1							6	16						23
14 Wolf Creek SP									27						27

Table 4. Hunting effort and wildlife harvest on public areas in Region 4, 2012-2013 season

Region 4 Sites	Total Acres	Total Acres Hunted	Hunter Trips	Dove	Squirrel	Rabbit	Pheasant	Quail	Ducks	Geese	Wild Turkey	Deer/ Gun	Deer/ Bow	Total Other Species	Total Units Harvested
1 Batchtown SFWA (MRA) c/	2069	2069	4595						7588	91					7679
2 Beaver Dam SP	744	430	128		14						1	12		37	64
3 Bohm Woods NP	90	90	42									1			1
4 Calhoun Point SFWA (MRA) c/	2300	2250	3014						3096	47				36	3179
5 Cedar Glen SNA	1202	1100	312									16	10		26
6 Clear Lake SHA d/	1460	760	237						402	9					411
7 Coffeen Lake SFWA	3180	3055	1652	130	28	1	11	18	147	33	7	10	36	279	700
8 Edward R. Madigan SFWA a/	750	300	264	1634		4	19								1657
9 Eldon Hazlet SRA a/	3107	2300	852	51	6						1	2	10		70
10 Ft. deChartres SM	1100	800	119									2	4		6
11 Ft. Kaskaskia SM	275	140	31										5		5
12 Frank Holten SP	1080	300	208										6		6
13 Freeman Mine SHA	179	24	56			3	13		14	4					34
14 Glades-12 Mile Island SFWA (MRA) c/	1454	1450	2453						1523	19				12	1554
15 Godar-Dia.-Hurr.Isl.SFWA (MRA) c/	2611	2607	2871						2794	110					2904
16 Goode's Woods NP	40	40	12												0
17 Horseshoe Lake SP b/	2854	2000	5222	2269				3	4498	210	3		63	351	7397
18 Horseshoe Lake SP (Gabaret, Mosenstein, & Chouteau Island Units)	3265	3265	3731	280	121	22		2	45	1	22		54	144	691
19 Jim Edgar Panther Creek SFWA a/	16449	16268	12347	5608	495	359	4049	273			54	104	242	155	11339
20 Kaskaskia River SFWA	16000	14000	3888	178	175	19			2526	39	37	137	62		3173
21 Kidd Lake Marsh SNA	465	465	57											66	66
22 Peabody River King SFWA	2000	1000	1258	495	4	22		20					18		559
23 Pere Marquette SP & Copperhead Holl.SWA	9152	7647	2537		367						16	42	32	45	502
24 Randolph County SRA	1031	750	1138	554	88	15					5		32	27	721
25 Ray Norbut SFWA	1380	1290	1013	105	83	6					5	15	27	89	330
26 Sand Ridge SF a/	7113	6500	5674	21	811	18	557	6	402	9	20	43	48	21	1956
27 Sanganois SFWA	9602	6860	5442						6383	9	4	2	14		6412
28 Sangchris Lake SRA a/	5280	2380	4621	1153	203	1	20	36	667	159	4	2	96	2	2343
29 Siloam Springs SP Buckhorn Unit	2250	2200	1930	502	85			4			14	14	65		684
30 Siloam Springs SP	3323	2380	1815		89						4	43	90	88	314
31 South Shore SP	794	139	195								2		6		8
32 Stump Lake SFWA (MRA) c/	2967	2907	4861						7488	35				31	7554
Sub-Total	105566	87766	72575	12980	2569	470	4669	362	37573	775	199	432	933	1383	62345

Continues on Page -15-

Table 4. Hunting effort and wildlife harvest on public areas in Region 4, 2012-2013 season

Region 4 Sites	Total Acres	Total Acres Hunted	Hunter Trips	Dove	Squirrel	Rabbit	Pheasant	Quail	Ducks	Geese	Wild Turkey	Deer/ Gun	Deer/ Bow	Total Other Species	Total Units Harvested
33 Turkey Bluffs SFWA	2265	2250	1122		112	2					12	55	16	8	205
34 Washington County CA	1440	750	1047	16	227	1					5		19	24	292
35 Weinberg-King SP	772	751	803	374	32	24		4				11	11		456
36 Weinberg-King SP - Scripps Unit	736	736	746		50	3		3			6	22	16		100
37 Weinberg-King SP - Spunky Bott.Unit	833	800	399		11	1						9	6	85	112
Sub-Total	6046	5287	4117	390	432	31	0	7	0	0	23	97	68	117	1165
TOTAL:	111612	93053	76692	13370	3001	501	4669	369	37573	775	222	529	1001	1500	63510

a/ Controlled permit pheasant hunting area

b/ Public/private partnership pheasant hunting area

c/ Part of the Mississippi River Fish & Wildlife Management Area -(MRA)

Table 4.1. Site specific - other species harvest totals.

Region 4 Sites	Beaver	Coot	Coyote	Crow	Fox	Mink	Muskrat	Opossum	Raccoon	River Otter	Skunk	Snipe	Wood-chuck	Wood-cock	Totals
1 Beaver Dam SP	2							4	31						37
2 Calhoun Point SFWA (MRA)	36														36
3 Coffeen Lake SFWA	10					2	39	25	202	1					279
4 Fuller Lake SFWA (MRA) from Table 6	2							2	6						10
5 Glades-12 Mile Island SFWA (MRA)								5	7						12
6 Helmbold Slough SFWA (MRA) from Table 6	2					1			3						6
7 Horseshoe Lake SP		96		229				7	19						351
8 Horseshoe Lake SP Gabaret, Mosenthein, & Chouteau Is.Unit)			5	137								2			144
9 Jim Edgar Panther Creek SFWA	15		10						130						155
10 Kidd Lake SRA						1	64		1						66
11 MRA (T6 Other Species all sites)	57					3	13	8	39	1					121
12 Pere Marquette SP (Copperhead Holl.SWA)			3			1	2	5	34						45
13 Piasa Island SFWA (MRA) from Table 6	3					1	1		6						11
14 Randolph County SRA									27						27
15 Ray Norbut SFWA	14							3	19	49	4				89
16 Red's Landing SFWA (MRA) from Table 6	7														7
17 Rip Rap Landing SFWA (MRA) from Table 6								4	5						9
18 Sand Ridge SF				21										26	47
19 Sangchris Lake SRA			2												2
20 Siloam Spring SP	10							4	9	54	1				78
21 Stump Lake SFWA (MRA)	9					1	8		12	1					31
22 Turkey Bluffs SFWA									8						8
23 Washington County WA	2							8	14						24
24 Weinberg-King SP - Spunky Bottoms Unit							1	23	60	1					85

Table 5. Hunting effort and wildlife harvest on public areas in Region 5, 2012-2013 season

Region 5 Sites	Total Acres	Total Acres Hunted	Hunter Trips	Dove	Squirrel	Rabbit	Pheasant	Quail	Ducks	Geese	Wild Turkey	Deer/ Gun	Deer/ Bow	Total Other Species	Total Units Harvested
1 Beall Woods SP	630	516	136										9		9
2 Cache River SNA	14489	11946	2599	19	255	88		1	2028		15	91	50		2547
3 Campbell Pond SHA	520	520	197		16						2	11	8		37
4 Cape Bend SFWA	1380	1375	146		12								3	8	23
5 Carlyle Lake SFWA	9914	9868	10657						13528	157	5	44	30		13764
6 Cedar-Draper Bluff SNA	1300	1275	238		23						2	9	6	1	41
7 Chauncey Marsh SNA	667	519	231		51							10	13	14	88
8 Crawford County SFWA	1129	1100	851	42	183	24		1			1	29	28	2	310
9 Cypress Pond SNA	1047	1047	298		2	2					4	13	9	1	31
10 Deer Pond SNA	230	190	74								1	1	5		7
11 Dixon Springs SP	1087	265	63								1	5	7		13
12 Dog Island SWA	221	220	88								5	9	3		17
13 Ferne Clyffe SP	1125	450	170		9						5	22	2		38
14 Ft. Massac SP	1450	984	419		25	1					2	14	13		55
15 Giant City SP	4055	2255	1004		92	10					15	81	22		220
16 Hamilton County SFWA	1683	1530	607	1	27	64		48			1	57	26	23	247
17 Horseshoe Lake SFWA	11692	4190	2475	3	109				2112	26	4	19	8		2281
18 Kinkaid Lake SFWA	3350	3000	895	17	60	7		16	64	20	19	36	28		267
19 Meeker SHA	72	71	41		1							1	1		3
20 Mermet Lake SFWA	2726	1700	3030		24				3249	8	11	1	9		3302
21 Mt. Vernon GPC NC	700	600	542	269	25	18					4		22		338
22 Newton Lake SFWA	6500	5600	919		38	98		50	4			38	52		280
23 Prairie Ridge SNA	2694	2614	102									4	1		5
24 Pyramid SRA	19700	15774	7830	2090	190	216	4	355	4021	463	14	50	123	109	7635
25 Ramsey Lake SRA b/	1961	1610	1532	438	185	13	676	2			6		18	16	1354
26 Rauchfuss Hill	150	150	0												0
27 Red Hills SP	967	736	329		51	1							27	51	130
28 Rend Lake SFWA	12690	7690	10096						12472	161	22	32	38		12725
29 Sahara Woods SNA	4000	4000	558	2	6	7						18	20	25	78
30 Saline County SFWA	1450	1000	407	12	139	12		5			10	31	8	9	226
31 Sam Dale Lake SFWA	1301	800	460					2			4	9	16		31
32 Sam Parr SFWA	1172	840	925	870	40	23		10			4		13	24	984
Sub Total	112052	84435	47919	3763	1563	584	680	490	37478	835	157	635	618	283	47086

Continues on Page -17-

Table 5. Hunting effort and wildlife harvest on public areas in Region 5, 2012-2013 season

Region 5 Sites	Total Acres	Total Acres Hunted	Hunter Trips	Dove	Squirrel	Rabbit	Pheasant	Quail	Ducks	Geese	Wild Turkey	Deer/ Gun	Deer/ Bow	Total Other Species	Total Units Harvested
33 Sielbeck Forest SNA	385	385	262		108	3					2	4	6		123
34 Skinner Farm SHA	221	70	225	444	2	1					1	1	2		451
35 Stephen A. Forbes SRA	3103	2580	1854	77	59	23		11	91	18	20		37	183	519
36 Ten Mile Creek SFWA	5824	4995	1987	946	163	469		169	200	27	20	70	37	22	2123
37 Trail of Tears SF	5019	4784	726		488						9	24	3	1	525
38 Union County SFWA	6202	2800	2215	49	286				1307	7		6	33	42	1730
39 Wayne Fitzgerald SRA b/	3010	1800	3956				4405				15		84		4504
Sub Total	23764	17414	11225	1516	1106	496	4405	180	1598	52	67	105	202	248	9975
TOTALS:	135816	101849	59144	5279	2669	1080	5085	670	39076	887	224	740	820	531	57061

b/ Public/private partnership pheasant hunting area

Table 5.1. Site specific - other species harvest totals.

Region 5 Sites	Beaver	Beaver	Coot	Coyote	Crow	Fox	Mink	Muskrat	Opossum	Raccoon	River Otter	Skunk	Snipe	Wood-chuck	Woodcock	Totals
1 Cape Bend SFWA										8						8
2 Cedar-Draper Bluffs SNA										1						1
3 Chauncey Marsh SNA										14						14
4 Crawford County SFWA										2						2
5 Cypress Pond SNA				1												1
6 Hamilton County SFWA										18				5		23
7 Pyramid SRA	15		21							73						109
8 Ramsey Lake SRA										16						16
9 Red Hills SP										51						51
10 Sahara Woods SFWA	8							2	2	13						25
11 Saline Co. SFWA				1					4	4						9
12 Sam Dale Lake SFWA										24						24
13 Sam Parr SFWA										24						24
14 Stephen A. Forbes SRA	10		2		1			94	20	54	2					183
15 Ten Mile Creek SFWA				3						18					1	22
16 Trail of Tears SF										1						1
17 Union County SFWA									15	27						42

Table 6. Illinois public hunting sites with no site data collection, 2012-2013 season

Area	Total Acres	Total Acres Hunted	Hunter Trips	Dove	Squirrel	Rabbit	Pheasant	Quail	Ducks	Geese	Wild Turkey	Deer/ Gun	Deer/ Bow	Total Other Species	Total Units Harvested
Region 1															
1 Mississippi Riv-Pool #16 SFWA a/	5260	5260		*	*	*			*	*				*	0
2 Mississippi-Riv Pool #17 SFWA a/	2883	2883		*	*	*	*	*	*	*				*	0
3 Mississippi Riv-Pool #18 SFWA a/	5173	5173		*	*	*	*	*	*	*				*	0
4 Sinnissippi Lake SWA	2000	1200							*	*					0
SUB TOTAL:	15316	14516	0	0	0	0	0	0	0	0	0	0	0	0	0
Region 4															0
5 Fuller Lake SFWA (MRA) b/	1800	1800	28	*	*	*		*	11	*	*	*	*	*	11
6 Helmbold Slough SFWA (MRA)	716	716			*				*	*				*	0
7 Illinois River SFWA (MRA)	150	150							*	*					0
8 Mississippi Riv-Pool #21 SFWA a/	8536	8467		*	*	*		*	*	*				*	0
9 Mississippi Riv-Pool #22 SFWA a/	6861	6200		*	*	*		*	*	*				*	0
10 Mississippi Riv-Pool #24 SFWA a/	10454	10211		*	*	*		*	*	*				*	0
11 Mississippi Riv-Pool #25 SFWA (MRA)	2079	2079			*				*	*	*			*	0
12 Oakford SHA a/	143	143		*	*	*	*	*	*	*	*			*	0
13 Piasa Island SFWA (MRA)	80	80		*	*	*		*	*	*	*	*	*	*	0
14 Red's Landing SFWA (MRA) b/	800	785	20	*	*	*		*	19	*	*	*	*	*	19
15 Rip Rap Landing SFWA (MRA) b/	1232	1225	18	*	*	*		*	16	*	*	*	*	*	16
16 Sangamon River SFWA a/	138	138		*	*	*	*	*	*	*				*	0
(Other MRA data from ILCHECK)			528									53	39	121	213
SUB TOTAL:	32989	31994	594	0	0	0	0	0	46	0	0	53	39	121	259
Region 5															
17 Devil's Island SFWA a/	2741	2741		*	*	*		*	*	*				*	0
18 Wildcat Hollow SHA a/	680	675		*	*	*	*	*			*			*	0
19 Wise Ridge SNA	555	550		*	*	*	*	*			*	*	*	*	
SUB TOTAL:	3421	3416	0	0	0	0	0	0	0	0	0	0	0	0	0
GRAND TOTAL:	51726	49926	594	0	0	0	0	0	46	0	0	53	39	121	259

* Indicates species hunted at these sites

(MRA) - Part of Mississippi River Fish & Wildlife Management Area

a/ Sites with wild turkey and white-tailed deer data provided from the ILCHECK system

b/ MRA sites - youth duck hunting data

Table 7. Hunting effort and wildlife harvest on public areas regional summary, 2012-2013 season

Regions	Total Acres	Total Acres Hunted	Hunter Trips	Dove	Squirrel	Rabbit	Pheasant	Quail	Ducks	Geese	Wild Turkey	Deer/ Gun	Deer/ Bow	Total Other Species	Total Units Harvested
Region 1 a/	90730	68418.75	59575	9537	2855	464	1134	17	15966	1031	104	541	725	1602	33976
Region 2 a/	35313	23600	30240	3492	447	61	13467	6	3381	306	6	100	181	183	21630
Region 3 a/	41290.94	30034	30635	2637	2804	960	2973	20	879	37	75	172	647	778	11982
Region 4 a/	111612	93053	76692	13370	3001	501	4669	369	37573	775	222	529	1001	1500	63510
Region 5 a/	135816	101849	59144	5279	2669	1080	5085	670	39076	887	224	740	820	531	57061
Sub Totals:	414761.94	316954.75	256286	34315	11776	3066	27328	1082	96875	3036	631	2082	3374	4594	188159
Public lands w/no on-site data collection	51726	49926	594						46			53	39	121	259
ILCHECK system data only b/															
GRAND TOTALS	466487.94	366880.75	256880	34315	11776	3066	27328	1082	96921	3036	631	2135	3413	4715	188418

a/ Controlled and wild hunting figures combined for ring-necked pheasant

b/ Harvest data collected through the Illinois IDNR **ILCHECK** telephone and on-line check-in system

Table 8. Statewide percent change - 2012-13 vs. 2011-12 seasons hunting effort and wildlife harvest

ACRES / TRIPS / SPECIES	2011-2012	2012-2013	PERCENT OF CHANGE (+) or (-)
Total Acres <i>a/</i>	467553	466487.94	(-) 0%
Total Acres Hunted	366393	366880.75	(+) 0%
Hunter Trips	275882	256880	(-) 7%
Mourning Dove	30219	34315	(+) 14%
Squirrels	10400	11776	(+) 13%
Cottontail	2054	3066	(+) 49%
Ring-Necked Pheasant	35985	27328	(-) 24%
Bobwhite Quail	1140	1082	(-) 5%
Ducks	92807	96921	(+) 4%
Geese	3549	3036	(-) 14%
Wild Turkey <i>b/</i>	643	631	(-) 5%
Deer (Gun) <i>b/</i>	1977	2135	(+) 6%
Deer (Bow) <i>b/</i>	3427	3413	(-) 1%
Raccoon	2885	2428	(-) 16%
Other Species <i>c/</i>	2692	2287	(-) 15%
TOTAL: <i>d/</i>	187778	188418	(+) 1%

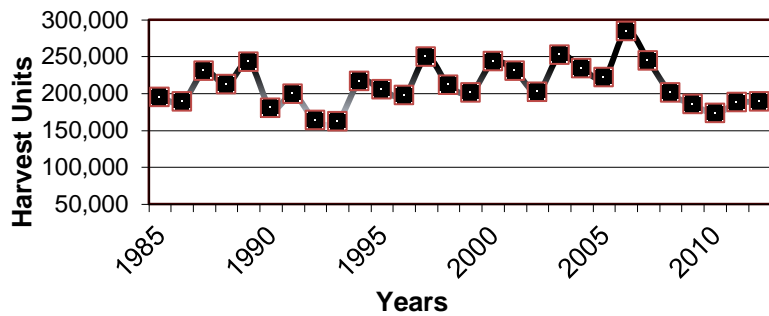
a/ Compiled from the most recent survey of IDNR managed public hunting properties.

b/ Includes figures from the ILCHECK deer and turkey harvest system and from sites that previously had no data reports.

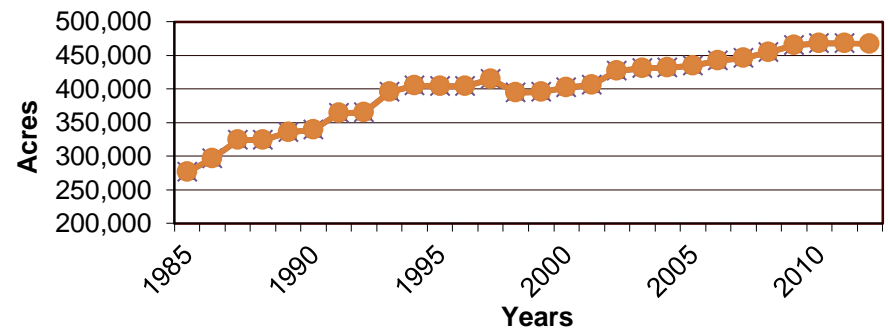
c/ Other species include beaver, coot, coyote, crow, fox, mink, muskrat, opossum, river otter, skunk, snipe, woodchuck, and woodcock.

d/ Total units of wildlife harvested.

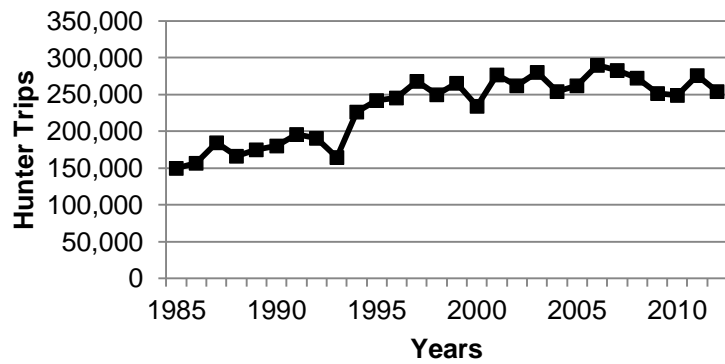
Total Wildlife Harvested on Illinois Public Lands 1985 - 2012



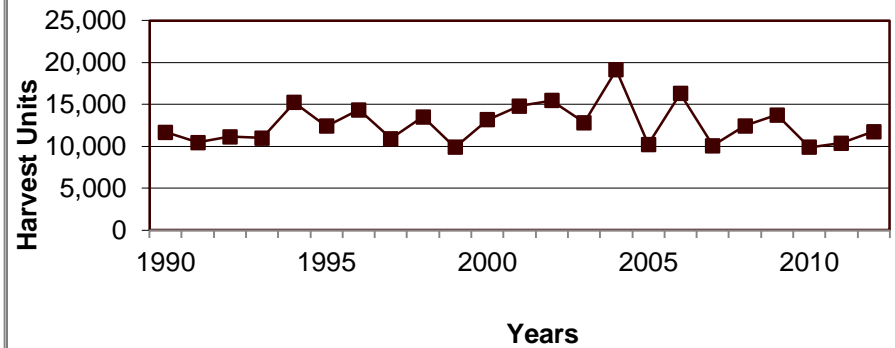
IDNR Public Hunting Areas Total Acreage, 1985 - 2012



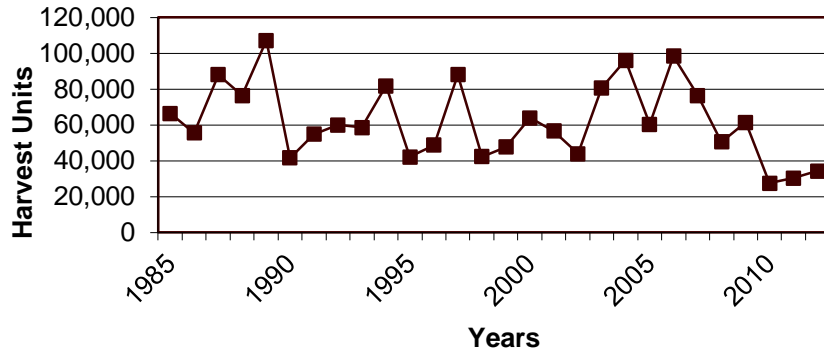
IDNR Public Hunting Areas- Hunter Trips 1985-2012



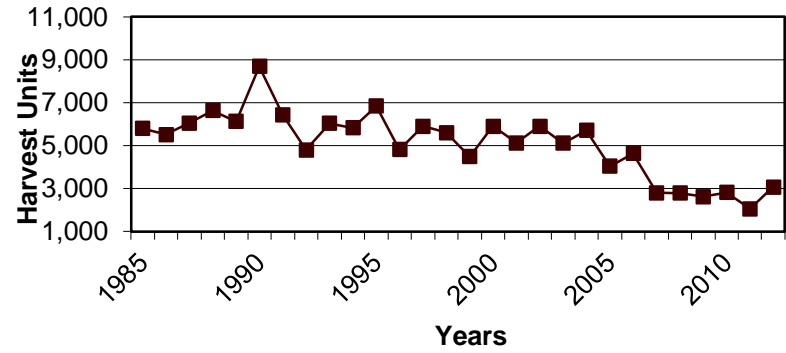
Squirrel Harvest 1985 - 2012



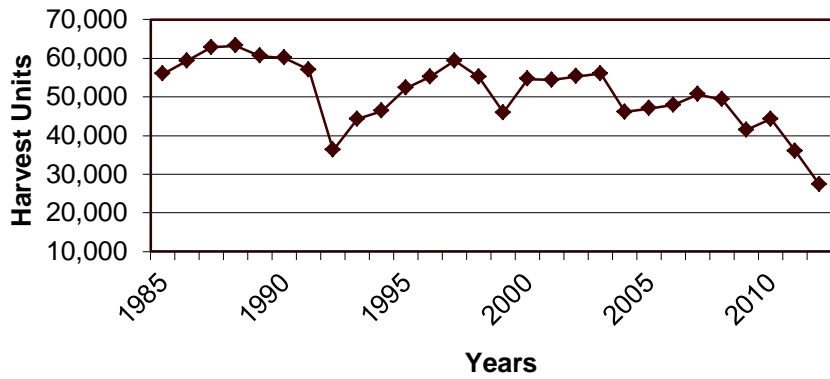
**Mourning Dove Harvest
1985 - 2012**



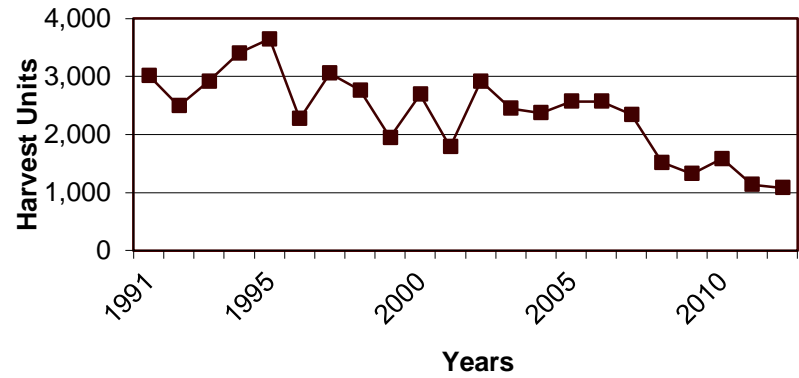
**Cottontail Rabbit Harvest
1985 - 2012**



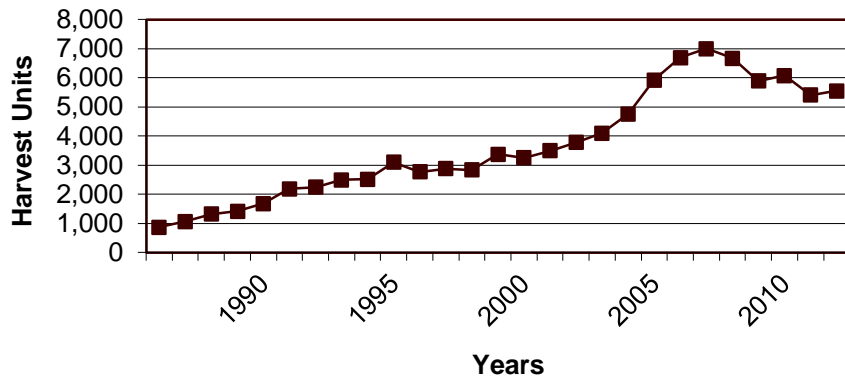
**Ring-necked Pheasant Harvest
1985 - 2012**



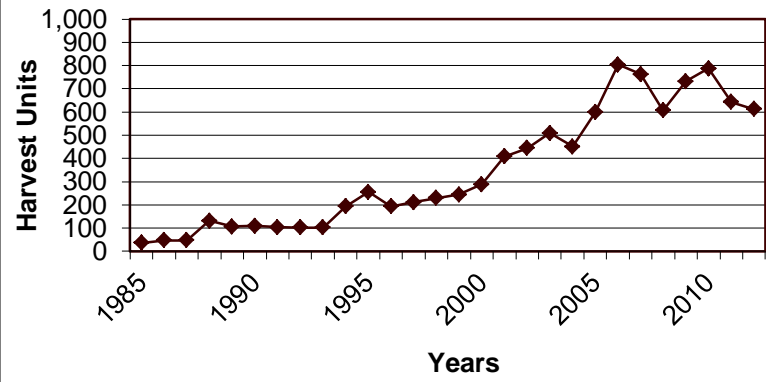
**Bobwhite Quail Harvest
1991 - 2012**



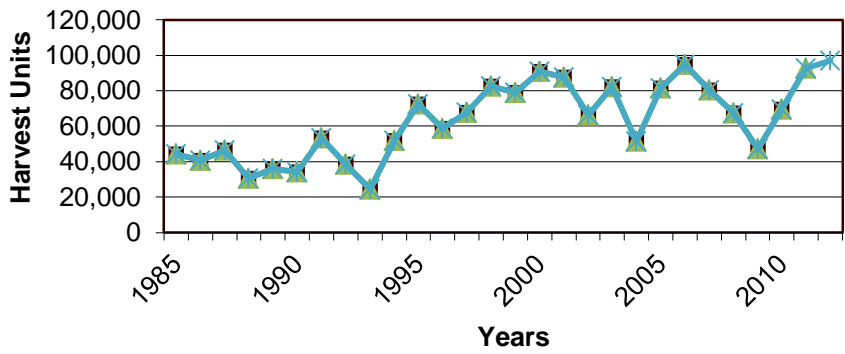
**White-tailed Deer Harvest
1985 - 2012**



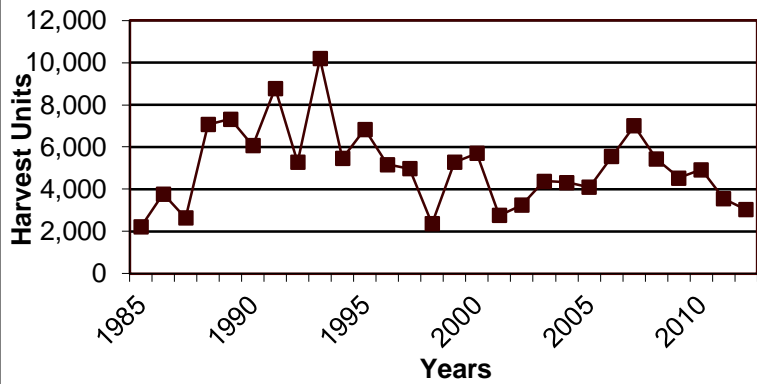
**Eastern Wild Turkey Harvest
1985 - 2012**



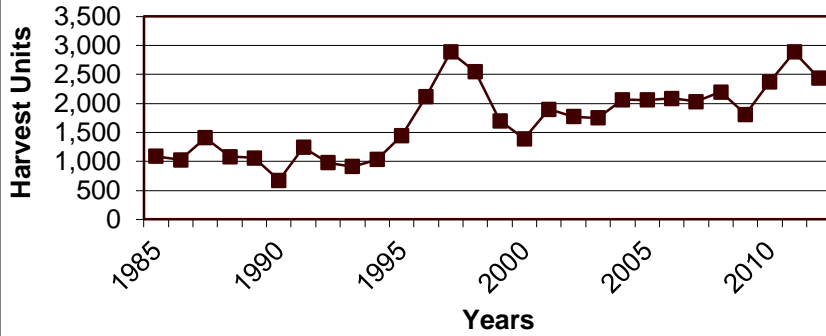
**Duck Harvest
1985 - 2012**



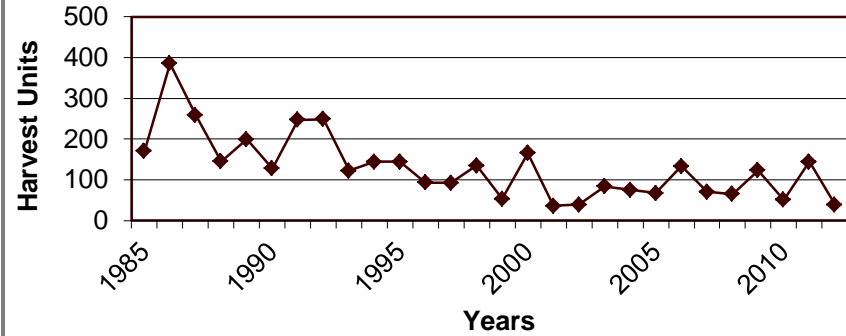
**Goose Harvest
1985 - 2012**



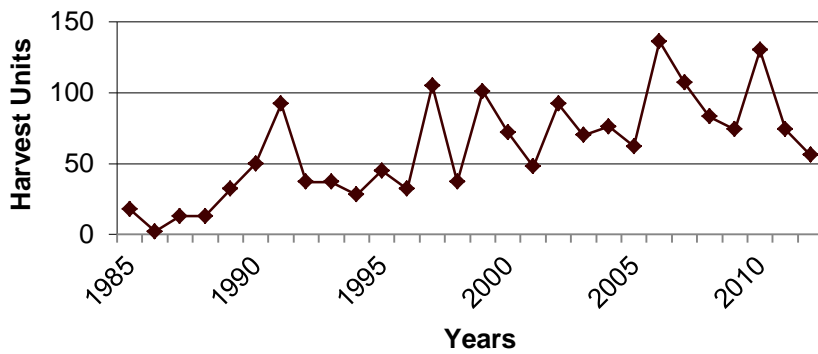
**Raccoon Harvest
1985 - 2012**



**Woodcock Harvest
1985 - 2012**



**Coyote Harvest
1985 - 2012**



**Crow Harvest
1985 - 2012**

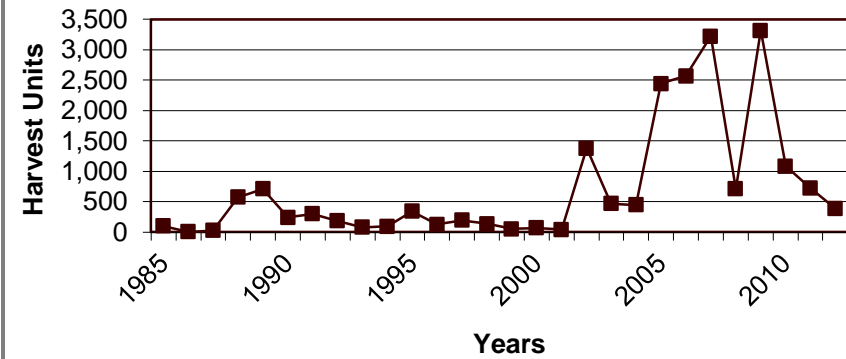


Table 9. Mourning dove hunting effort and harvest on Illinois public hunting areas, 2012-2013 season

REGION 1 SITES	MAN/DAYS	DOVE HARVESTED	REGION 3 SITES	MAN/DAYS	DOVE HARVESTED	REGION 5 SITES	MAN/DAYS	DOVE HARVESTED
1 Anderson Lake SFWA	76	60	1 Clinton Lake SRA	110	158	1 Cache River SNA	23	19
2 Banner Marsh SFWA	108	27	2 Fox Ridge SP	34	78	2 Crawford County SFWA		42
3 Big Bend SFWA	188	668	3 Harry 'Babe' Woodyard SNA	51	201	3 Hamilton County SFWA	1	1
4 Big River SF	29	16	4 Hidden Springs SF	2	0	4 Horseshoe Lake SFWA	1	3
5 Double "T" SFWA	206	607	5 Kickapoo SRA	5	0	5 Kinkaid Lake SFWA	32	17
6 Green River SWA	594	1650	6 Iroquois County SFWA	314	1217	6 Mt. Vernon GPC	88	269
7 Hennepin Canal ST	42	75	7 Middle Fork SFWA	16	8	7 Pyramid SRA	439	2090
8 Johnson-Sauk Trail SRA	278	1516	8 Moraine View SRA	89	226	8 Ramsey Lake SRA	130	438
9 Jubilee College SP	120	320	9 Shelbyville SFWA	235	749	9 Sahara Woods SFWA	2	2
10 Lake Le-Aqua-Na SFWA	34	73				10 Saline County SFWA	1	12
11 Mackinaw River SFWA	368	1138				11 Sam Parr SFWA	391	870
12 Marseilles SFWA	5	2				12 Skinner Farm SFWA	118	444
13 Marshall SFWA	55	31				13 Stephen A. Forbes SRA	50	77
14 Matthiessen SP	407	1687	REGION 3 - TOTAL	856	2637	14 Ten Mile Creek SFWA	164	946
15 Mautino SFWA	56	101	REGION 4 SITES	MAN/DAYS	DOVE HARVESTED	15 Union County FWA	11	49
16 Morrison-Rockwood SP	216	53						
17 Sand Prairie SHA	98	478	1 Coffeen Lake SFWA	51	130			
18 Shabbona Lake SP	119	183	2 Edward R. Madigan SFWA	234	1634			
19 Snakeden Hollow SFWA	180	852	3 Eldon Hazlet SRA	50	51			
20 Victoria SHA	a/		4 Horseshoe Lake SP	458	2269			
			5 Horseshoe Lake SP (Island units)	172	280			
			6 Jim Edgar Panther Creek SFWA	654	5608			
			7 Kaskaskia River SFWA	97	178			
REGION 1 - TOTAL	3103	9477	8 Peabody River King SFWA	313	495			
REGION 2 SITES	MAN/DAYS	DOVE HARVESTED	9 Randolph County SRA	1108	554	REGION 5 - TOTAL	1427	5217
1 Chain O' Lakes SP	56	27	10 Ray Norbut SFWA	26	105			
2 Des Plaines SFWA	520	1981	11 Sand Ridge SF	10	21	REGIONS	MAN/DAYS	DOVE HARVESTED
3 Kankakee River SP	215	327	12 Sangchris Lake SRA	326	1153	1	3103	9477
4 Silver Springs SFWA	486	1157	13 Siloam Spgs. SP-Buckhorn Unit	148	502	2	1277	3492
			14 Washington County CA	95	16	3	856	2637
			15 Weinberg-King SP	77	374	4	3819	13370
						5	1427	5217
REGION 2 - TOTAL	1277	3492	REGION 4 - TOTAL	3819	13370	GRAND TOTAL	10482	34193

a/ Dove hunting effort and harvest figures included in Snakeden Hollow SFWA totals

**Table 10. Hunting effort and wildlife harvest on controlled hunting areas on Illinois Public land 2012-2013 season
IDNR Controlled Permit Pheasant Hunting Areas**

SITES	HUNTER TRIPS	PHEASANTS RELEASED	PHEASANTS HARVESTED	PERCENT HARVESTED	HUNTER SUCCESS RATIO
1 Clinton Lake SRA a/	23	104	27	0.26	1.17
2 Des Plaines SFWA	6556	13384	7079	0.53	1.08
3 Eldon Hazlet SRA	2248	5152	3271	0.63	1.46
4 Green River SWA	471	1080	501	0.46	1.06
5 Iroquois County SFWA	2335	5158	2483	0.48	1.06
6 Jim Edgar Panther Creek SFWA	2770	5626	4029	0.72	1.45
7 Johnson-Sauk Trail SRA	1009	2379	897	0.38	0.89
8 Kankakee River SP	1694	3690	1340	0.36	0.79
9 Mackinaw River SFWA a/	9	56	4	0.07	0.44
10 Moraine View SRA	1353	3348	1595	0.48	1.18
11 Sand Ridge SF	663	1912	567	0.30	0.86
12 Sangchris Lake SRA a/	3	36	0	0.00	0.00
13 Wayne Fitzgerrell SRA	2797	6432	4449	0.69	1.59
14 World Shooting & Recreational Center a/	21	100	32	0.32	1.52
TOTAL	21952	48457	26274	0.54	1.20

a/ Illinois Youth Pheasant Hunt Only

Public/Private Partnership Pheasant Hunting Areas

SITES	HUNTER TRIPS	PHEASANTS RELEASED	PHEASANTS HARVESTED	PERCENT HARVESTED	HUNTER SUCCESS RATIO
1 Chain O' Lakes SP	2690	5864	3281	0.56	1.22
2 Horseshoe Lake-Madison SP	587	1467	925	0.63	1.58
3 Ramsey Lake SRA	418	1005	676	0.67	1.62
4 Silver Springs SFWA	3044	6838	4769	0.70	1.57
TOTAL	6739	15174	9651	0.64	1.43

Table 11. The statewide public lands wildlife habitat development project - (Federal Aid Project W-76-D) 2012-2013 season

Area	Total Acres	Total Acres Hunted	Hunter Trips	Dove	Squirrel	Rabbit	Pheasant	Quail	Ducks	Geese	Wild Turkey	Deer/ Gun	Deer/ Bow	Total Other Species	Total Units Harvested
1 Anderson Lake SFWA	2248	2000	2807	60		9			2690	28			6	31	2824
2 Apple Riv. Canyon SP- S&T units	1484	951	784		102	1					7	7	8	1	126
3 Argyle Lake SP	1800	950	442		60	3					5	2	12	1	83
4 Big Bend SFWA	2376	2338	3535	668	141	104	31	3			10		52	20	1029
5 Big River SF	2997	2970	856	16	21	21					12	19	27		116
6 Birkbeck SHA	80	80	48								27				27
7 Bradford SHA	103.5	100	37					13	3						16
8 Cache River SNA	14489	11946	2599	19	255	88		1	2028		15	91	50		2547
9 Campbell Pond SHA	520	520	197		16						2	11	8		37
10 Carlyle Lake SFWA	9914	9868	10657						13528	157	5	44	30		13764
11 Castle Rock SP	2000	1620	970		132						7	40	22		201
12 Cedar-Draper Bluffs SNA	1300	1275	238		23						2	9	6	1	41
13 Clinton Lake SRA	9937	6082	6163	158	648	228	52				43	2	224	210	1565
14 Coffeen Lake SFWA	3180	3055	1652	130	28	1	11	18	147	33	7	10	36	279	700
15 Crawford County SFWA	1129	1100	851	42	183	24		1			1	29	28	2	310
16 Cypress Pond SNA	1047	1047	298		2	2					4	13	9	1	31
17 Deer Pond SNA	230	190	74								1	1	5		7
18 Dixon Springs SP	1087	265	63								1	5	7		13
19 Dog Island SWA	221	220	88								5	9	3		17
20 Ferne Clyffe SP	1125	450	170		9						5	22	2		38
21 Finrock SHA b/	377	377	36					23							23
22 Ft. deChartres SM	1100	800	119									2	4		6
23 Ft. Kaskaskia SM	275	140	31										5		5
24 Freeman Mine SHA	179	24	56			3	13		14	4					34
25 Giant City SP	4055	2255	1004		92	10					15	81	22		220
26 Green River SWA a/	2565	2515	2227	1650	3	57	98				3	35	17		1863
Sub Total	65818.5	53138	36002	2743	1715	551	268	26	18407	222	150	432	583	546	25643

Continues on Page -28-

Table 11. The statewide public lands wildlife habitat development project - (Federal Aid Project W-76-D) 2012-2013 season

Area	Total Acres	Total Acres Hunted	Hunter Trips	Dove	Squirrel	Rabbit	Pheasant	Quail	Ducks	Geese	Wild Turkey	Deer/ Gun	Deer/ Bow	Total Other Species	Total Units Harvested
27 Hallsville SHA	80	80	42			2	17								19
28 Hanover Bluff SNA	348.75	332.75	210		107	4					2	2	4		119
29 Hennepin Canal ST	5348	4854	198	75									14	626	715
30 Herschel Workman SHA	135	135	33			2	9								11
31 Hidden Springs SF	1129	963	265		235	21	1	2			3	11	21	43	337
32 Hindsboro SHA	90	85	47			2	8								10
33 Ilo Dillin SNA	79	75	65			8	3						2		13
34 Johnson-Sauk Trail SFWA	1361	862	2003	1516	95	9	897						15	29	2561
35 Kaskaskia River SFWA	16000	14000	3888	178	175	19			2526	39	37	137	62		3173
36 Kickapoo SRA	3981	2381	1844		241	12			1			39	36	45	374
37 Kidd Lake Marsh SNA	465	465	57											66	66
38 Kinkaid Lake SFWA	3350	3000	895	17	60	7		16	64	20	19	36	28		267
39 Lowden-Miller SF	2289	2225	1198		304						19	53	17		393
40 Mackinaw River SFWA	1415	1400	2021	1138	135	51	23				2	7	29	13	1398
41 Marseilles SFWA	2515	2239	2140	2	232	46						93	29		402
42 Marshall SFWA	6539	4876	3598	31	252	10		1	1841	133		12	22	103	2405
43 Mautino SFWA	911	891	766	101									18	37	156
44 Meeker HA	72	71	41		1							1	1		3
45 Moraine View SRA	1687	1191	2559	226	331	167	62				7		38	4	835
46 Newton Lake SFWA	6500	5600	919		38	98		50	4			38	52		280
47 Peabody River King SFWA	2000	1000	1258	495	4	22		20					18		559
48 Perdueville SHA	120	120	38			2	8								10
49 Randolph County SRA	1031	750	1138	554	88	15					5		32	27	721
50 Rauchfuss Hill	150	150	0												0
51 Ray Norbut SFWA	1380	1290	1013	105	83	6					5	15	27	89	330
52 Red Hills SP	967	736	329		51	1							27	51	130
53 Redwing Slough/D.L.SNA	711	200	196						154	35					189
54 Rend Lake SFWA	12690	7690	10096						12472	161	22	32	38		12725
Sub Total	73343.8	57661.75	36857	4438	2432	504	1028	89	17062	388	121	476	530	1133	28201

Table 11. The statewide public lands wildlife habitat development project - (Federal Aid Project W-76-D) 2012-2013 season

Area	Total Acres	Total Acres Hunted	Hunter Trips	Dove	Squirrel	Rabbit	Pheasant	Quail	Ducks	Geese	Wild Turkey	Deer/ Gun	Deer/ Bow	Total Other Species	Total Units Harvested
55 Saline County SFWA	1450	1000	407	12	139	12		5			10	31	8	9	226
56 Sam Dale Lake SFWA	1301	800	460					2			4	9	16		31
57 Sam Parr SFWA	1172	840	925	870	40	23		10			4		13	24	984
58 Sanganois SFWA	9602	6860	5442						6383	9	4	2	14		6412
59 Sangchris Lake SRA	5280	2380	4621	1153	203	1	20	36	667	159	4	2	96	2	2343
60 Saybrook SHA	646	646	123			1	152								153
61 Shelbyville SFWA	6450	6350	8079	749	439	314	37	2	878	37	8	21	50	146	2681
62 Sibley SHA	635	630	117			1	64								65
63 Siloam Springs SP	3323	2380	1815		89						4	43	90	88	314
64 Silver Springs SFWA	1314	900	4951	1157	142	2	4800						13	1	6115
65 Skinner Farm SHA	221	70	225	444	2	1					1	1	2		451
66 Snakeden Hollow SFWA	2500	2500	502	852					16	95			5	80	1048
67 Spoon River SF	1680	1650	2303		225	2					4	20	38	24	313
68 Stephen A. Forbes SRA	3103	2580	1854	77	59	23		11	91	18	20		37	183	519
69 Tapley Woods SNA	259	259	235		114						4	4	1		123
70 Ten Mile Creek SFWA	5824	4995	1987	946	163	469		169	200	27	20	70	37	22	2123
71 Trail of Tears SF	5019	4784	726		488						9	24	3	1	525
72 Turkey Bluffs SFWA	2265	2250	1122		112	2					12	55	16	8	205
73 Victoria SHA	241	241	47				11	4							15
74 Wards Grove SNA	337.6	335	174									14	4		18
75 Weinberg-King SP	772	751	803	374	32	24		4				11	11		456
76 Wildcat Hollow SHA	680	675	No Data												0
77 Willow Creek SHA	87	87	30			5									5
78 Witkowsky SWA	1095	1095	912		101						13	23	20	1	158
79 Woodford SFWA	5426	1840	2309		2				2618	100			2	1	2723
Sub Total	60682.6	46898	40169	6634	2350	880	5084	243	10853	445	121	330	476	590	28006
GRAND TOTAL	199845	157697.75	113028	13815	6497	1935	6380	358	46322	1055	392	1238	1589	2269	81850

a/Controlled permit Pheasant Hunting Area

b/ No Hunter Data was Collected.

**Table 12. The statewide public lands wildlife habitat development project
(Federal Aid Project W-76-D) Percent change - 2012-13 vs. 2011-12 seasons**

Acres /Trips/Species	2011-2012	2012-2013	Percent of Change (+) or (-)
Total Acres a/	199513	199845	(+) 1%
Total Acres Hunted a/	157438	157698	(+) 0%
Hunter Trips	115715	113028	(-) 2%
Mourning Dove	11364	13815	(+) 22%
Squirrels	5962	6497	(+) 9%
Cottontail	1512	1935	(+) 28%
Ring-Necked Pheasant (<i>wild bird harvest only</i>)	526	479	(-) 9%
Ring-Necked Pheasant (<i>released bird harvest only</i>)	7321	6380	(-) 19%
Bobwhite Quail	424	358	(-) 16%
Ducks	40592	46322	(+) 14%
Geese	1682	1055	(-) 37%
Wild Turkey	343	392	(+) 14%
Deer (Gun)	1144	1238	(+) 8%
Deer (Bow)	1628	1589	(-) 2%
Other Species b/	2639	2269	(-) 14%
TOTAL:	75137	82329	(+) 10%

a/ Compiled from the most recent survey of IDNR managed public hunting properties

b/ Other species include beaver, coyote, crow, fox, mink, muskrat, opossum, raccoon, skunk, snipe, woodchuck, woodcock, and coot.

Table 13. Waterfowl harvest, hunter trips and success rates during the 2012-13 Illinois waterfowl season at 48 public sites.

Public Land Site	Harvest During 60 Day Duck Season						Post Duck Season Goose Harvest			Waterfowl Season Totals (Includes all seasons)				
	Hunter Trips	Mallards	Total Ducks	Success Rate	% Change From 2010/11 Duck Harvest	Canada Geese	Hunter Trips	Canada Geese	Canada Goose Success Rate	1./ Hunter Trips	2./ Duck Harvest	3./ Canada Geese	Snow Blue	White Front
1 Anderson Lake SFWA	2569	1666	2673	1.04		26				2620	2690	27	1	1
2 Banner Marsh SFWA	1717	395	982	0.57		97	265	87	0.33	2021	1002	191		
3 Batchtown SFWA	4534	3841	7499	1.65		91								
4 Cache River SNA	1722		2028	1.18						1722	2028			
5 Calhoun Point SFWA	2949	1448	3077	1.04		47								
6 Carlyle Lake SFWA	8483	5762	11601	1.37		18	76	19	0.25	10217	13528	40	50	67
7 Chain O' Lakes SP b./	626		431	0.69		49				626	431	49		
8 Clear Lake SHA	237		402	1.70		9				237	402	9		
9 Coffeen Lake SFWA	147	53	133	0.90		23	40	10	0.25	196	147	33		
10 Des Plaines SFWA	262	47	189	0.72		24	36	5	0.14	314	189	31		
11 Donnelley SFWA a./	521	27	138	0.26		7	8	12	1.50	521	138	7		
12 Double "T" SFWA	232	76	154	0.66		11	198	33	0.17	528	154	44	100	
13 Freeman Mine	40	5	14	0.35		4				40	14	4		
14 Fox Ridge SP	7	0	0	0.00						7				
15 Glades-12 Mile Island S FWA	2419	886	1516	0.63		18								
16 Godar-Diamond-Hurricane Island SFWA	2823	1703	2742	0.97		110								
17 Heidecke Lake SFWA	916	360	828	0.90		13	2	0	0.00	918	828	13		
18 Horseshoe Lake SFWA (Alexander Co.)	2075	1107	2105	1.01		3	30		0.00	2117	2112	3	1	22
19 Horseshoe Lake SP & Island units (Madison Co.)	3398	679	3644	1.07		83	200	70	0.35	4337	4543	177	28	6
20 Kankakee River SP	171	50	65	0.38		25	5	1	0.20	196	65	26		
21 Kaskaskia River SFWA	2767	1115	2526	0.91		39	2767	39	0.01	2767	2526	39		
22 Kickapoo SRA	29	1		0.00						29	1			
23 Kinkaid Lake SFWA	168	10	64	0.38			42	20	0.48	210	64	20		
24 Lake DePue SFWA	871	257	692	0.79		17	12	8	0.67	895	700	25		
25 Marshall SFWA	1644	577	1547	0.94		77	86	45	0.52	2024	1841	133		
26 Mazonia-Braidwood SFWA	2332	1154	1537	0.66		29	303	66	0.22	2656	1559	95		
27 Mermet Lake SFWA	2551	1205	3249	1.27			7	7	1.00	2559	3249	7		1
28 Momence Wetlands LWR	69	6	19	0.28		1	3	0	0.00	72	19	1		
29 MRA youth hunt sites - Fullar Lake, Red's Landing, Rip Rap	66	2	46	0.70		0								
30 Newton Lake SFWA	21	1	5	0.24										
Sub Total	46366	22433	49906	1.08		821	4080	422	0.10	37829	38230	974	180	97

Table 13. Waterfowl harvest, hunter trips and success rates during the 2012-13 Illinois waterfowl season at 48 public sites.

Public Land Site	Harvest During 60 Day Duck Season					Post Duck Season Goose Harvest			Waterfowl Season Totals (Includes all seasons)					
	Hunter Trips	Mallards	Total Ducks	Success Rate	% Change From 2010/11 Duck Harvest	Canada Geese	Hunter Trips	Canada Geese	Canada Goose Success Rate	1./ Hunter Trips	2./ Duck Harvest	3./ Canada Geese	Snow Blue	White Front
31 Powerton Lake SFWA	478	148	520	1.09		59				478	520	59	4	
32 Pyramid SRA (includes all units)	3773	1440	4001	1.06		86	56	9	0.16	3870	4021	95	251	117
33 Red Wing Slough/Deer Lake SNA	196	118	154	0.79		35				196	154	35		
34 Rend Lake SFWA	8965	4959	12044	1.34		36	22	12	0.55	9196	12472	48	44	69
35 Rice Lake SFWA	4701	2016	5128	1.09		68				4378	5365	90		
36 Sanganois SFWA	5095	3966	6383	1.25		9				5222	6529	9		
37 Sangchris Lake SRA	1583	364	667	0.42		35	356	99	0.28	1583	667	136	6	23
38 Shabbona Lake SP	109		17	0.16		4				109	17	4		
39 Shelbyville SFWA	1256	304	715	0.57		23	13	11	0.85	1404	878	37		
40 Snakeden Hollow SFWA	2		3	1.50		19	146	71	0.49	332	18	95		
41 Spring Lake SFWA	1317	346	864	0.66		44				1330	921	53	2	1
42 Starved Rock SP	333	67	146	0.44		40				336	148	40		
43 Stephen Forbes SRA	210	45	91	0.43		12	30	6	0.20	240	91	18		
44 Stump Lake SFWA	4766	2950	7426	1.56		36								
45 Ten Mile Creek SFWA	183	79	184	1.01		7				191	200	7	17	3
46 Union County SFWA	1648	1110	1303	0.79		7				1648	1307	7		
47 William W. Powers SRA	563	33	132	0.23		49	18	7	0.39	583	136	56		
48 Woodford SFWA	2179	1651	2519	1.16		57	8	9	1.13	2289	2618	100		
Sub-Total	37357	19596	42297	1.13		626	649	224	0.35	33385	36062	889	324	213
TOTALS (Page 31 & 32)	83723	42029	92203	1.10		1447	4729	646	0.14	71214	74292	1863	504	310

1./ total waterfowl season hunter days

2./ includes harvest from early teal, youth duck hunt and 60 day duck hunting seasons

3./ includes harvest from early Giant Canada goose and regular Canada goose seasons

a./ includes data from designated youth hunting during regular duck season

b./ waterfowl data does not include the number of mallards, just total ducks. Due to the transition from one biologist to another.

Table 14. Teal harvest, hunter trips and success rate during the 16 day teal season in 2012.

Public Land Site	Hunter Trips	Teal Harvest	Success Rate
1 Cache River SNA	30	6	0.20
2 Carlyle Lake SFWA	990	1446	1.46
3 Coffeen Lake SFWA	6	6	1.00
4 Des Plaines SFWA	6	11	1.83
5 Horseshoe Lake SFWA	12	7	0.58
6 Horseshoe Lake SP	610	783	1.28
7 Kaskaskia River SFWA	47	11	0.23
8 Marshall SFWA	172	268	1.56
9 Pyramid SP	40	20	0.50
10 Rice Lake SFWA	205	191	0.93
11 Shelbyville SFWA	96	137	1.43
12 Snakeden Hollow SFWA	32	15	0.47
13 Ten Mile Creek SFWA	7	16	2.29
14 Union County SFWA	1	4	4.00
15 Woodford SFWA	33	35	1.06
Totals	2287	2956	1.29

Table 15. Ducks, geese and coots harvested, hunter trips and success rate during the 2 day youth hunting season in 2012.

Public Land Site	Total Hunter Trips	Harvest					Duck Success Rate
		Total Ducks	Mallards	Geese	Coots	Total Units	
1 Anderson Lake SFWA	51	17		1	2	20	0.33
2 Banner Marsh SFWA	39	22	2	7		29	0.56
3 Batchtown SFWA	61	89	1		3	92	1.46
4 Calhoun Point SFWA	44	19	2			19	0.43
5 Carlyle Lake SFWA	186	481	157			481	2.59
6 Coffeen Lake SFWA	3	8				8	2.67
7 Fox Ridge SP	7	0					0.00
8 Fuller Lake SFWA	28	11				11	0.39
9 Glades-12 Mile Island SFWA	34	7		1	1	9	0.21
10 Godar-Diamond SFWA	48	52	4		2	54	1.08
11 Horseshoe Lake-Madison SP	40	75	4		7	82	1.88
12 Lake DePue SFWA	12	8				8	0.67
13 Marshall SFWA	25	26	8			26	1.04
14 Mazonia-Braidwood SFWA	21	15	7			15	0.71
15 Mermet Lake SFWA	137	273				273	1.99
16 Red's Landing SFWA	20	19				19	0.95
17 Rend Lake SFWA	209	428	67			428	2.05
18 Rice Lake SFWA	72	46	3	1	2	49	0.64
19 Rip-Rap Landing SFWA	18	16	2		1	17	0.89
20 Sanganois SFWA	127	146	4			146	1.15
21 Sangchris Lake SRA	31	22		2		24	0.71
22 Shelbyville SFWA	39	25	3			25	0.64
23 Spring Lake SFWA	55	57	12	9		66	1.04
24 Starved Rock SP	3	2	2			2	0.67
25 Stump Lake SFWA	64	62				62	0.97
26 Union County SFWA	30	0				0	0.00
27 William A. Powers SRA	2	4	3			4	2.00
28 Woodford SFWA	53	64	24	4		68	1.21
Totals	1459	1994	305	25	18	2037	1.37

REFERENCES

Information contained and used in this report came from the following sources:

Illinois Public Hunting Areas Report 1984-85 Season
Illinois Public Hunting Areas Report 1985-86 Season
Illinois Public Hunting Areas Report 1986-87 Season
Illinois Public Hunting Areas Report 1987-88 Season
Illinois Public Hunting Areas Report 1988-89 Season
Illinois Public Hunting Areas Report 1989-90 Season
Illinois Public Hunting Areas Report 1990-91 Season
Illinois Public Hunting Areas Report 1991-92 Season
Illinois Public Hunting Areas Report 1992-93 Season
Illinois Public Hunting Areas Report 1993-94 Season
Illinois Public Hunting Areas Report 1994-95 Season
Illinois Public Hunting Areas Report 1995-96 Season
Illinois Public Hunting Areas Report 1996-97 Season
Illinois Public Hunting Areas Report 1997-98 Season
Illinois Public Hunting Areas Report 1998-99 Season
Illinois Public Hunting Areas Report 1999-00 Season
Illinois Public Hunting Areas Report 2000-01 Season
Illinois Public Hunting Areas Report 2001-02 Season
Illinois Public Hunting Areas Report 2002-03 Season
Illinois Public Hunting Areas Report 2003-04 Season
Illinois Public Hunting Areas Report 2004-05 Season
Illinois Public Hunting Areas Report 2005-06 Season
Illinois Public Hunting Areas Report 2006-07 Season
Illinois Public Hunting Areas Report 2007-08 Season
Illinois Public Hunting Areas Report 2008-09 Season
Illinois Public Hunting Areas Report 2009-10 Season
Illinois Public Hunting Areas Report 2010-11 Season
Illinois Public Hunting Areas Report 2011-12 Season
Illinois Public Hunting Areas Report 2012-13 Season

